

## Product datasheet

# Anti-Annexin-2/ANXA2 antibody [EPR13053(2)(B)] - C-terminal ab185957

**KO VALIDATED** Recombinant RabMAB

[3 References](#) [5 Images](#)

### Overview

<b>Product name</b>	Anti-Annexin-2/ANXA2 antibody [EPR13053(2)(B)] - C-terminal
<b>Description</b>	Rabbit monoclonal [EPR13053(2)(B)] to Annexin-2/ANXA2 - C-terminal
<b>Host species</b>	Rabbit
<b>Tested applications</b>	<b>Suitable for:</b> WB
<b>Species reactivity</b>	<b>Reacts with:</b> Mouse, Rat, Human
<b>Immunogen</b>	Synthetic peptide. This information is proprietary to Abcam and/or its suppliers.
<b>Positive control</b>	WB: K562, 293, HeLa, HepG2, SH-SY5Y, C6, RAW264.7, PC12 and NIH 3T3 cell lysates.
<b>General notes</b>	<p>This product is a recombinant monoclonal antibody, which offers several advantages including:</p> <ul style="list-style-type: none"><li>- High batch-to-batch consistency and reproducibility</li><li>- Improved sensitivity and specificity</li><li>- Long-term security of supply</li><li>- Animal-free production</li></ul> <p>For more information <a href="#">see here</a>.</p> <p>Our RabMAB<sup>®</sup> technology is a patented hybridoma-based technology for making rabbit monoclonal antibodies. For details on our patents, please refer to <a href="#">RabMAB<sup>®</sup> patents</a>.</p>

### Properties

<b>Form</b>	Liquid
<b>Storage instructions</b>	Shipped at 4°C. Store at +4°C short term (1-2 weeks). Upon delivery aliquot. Store at -20°C long term. Avoid freeze / thaw cycle.
<b>Storage buffer</b>	pH: 7.2 Preservative: 0.01% Sodium azide Constituents: 59% PBS, 40% Glycerol (glycerin, glycerine), 0.05% BSA
<b>Purity</b>	Protein A purified
<b>Clonality</b>	Monoclonal
<b>Clone number</b>	EPR13053(2)(B)
<b>Isotype</b>	IgG

## Applications

### The Abpromise guarantee

Our **Abpromise guarantee** covers the use of ab185957 in the following tested applications.

The application notes include recommended starting dilutions; optimal dilutions/concentrations should be determined by the end user.

Application	Abreviews	Notes
WB		1/1000 - 1/10000. Detects a band of approximately 36 kDa (predicted molecular weight: 39 kDa).

## Target

### Function

Calcium-regulated membrane-binding protein whose affinity for calcium is greatly enhanced by anionic phospholipids. It binds two calcium ions with high affinity. May be involved in heat-stress response.

### Sequence similarities

Belongs to the annexin family.  
Contains 4 annexin repeats.

### Domain

A pair of annexin repeats may form one binding site for calcium and phospholipid.

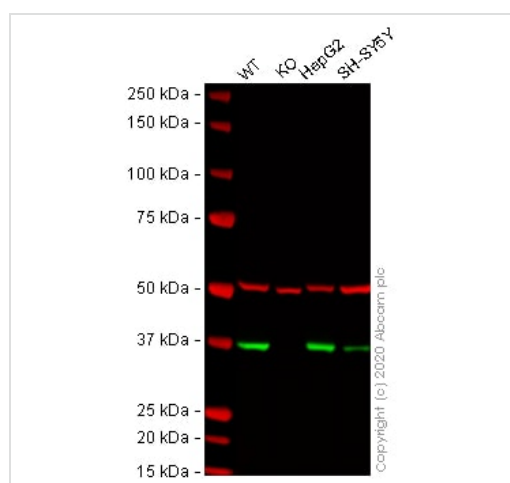
### Post-translational modifications

Phosphorylation of Tyr-24 enhances heat stress-induced translocation to the cell surface.  
ISGylated.

### Cellular localization

Secreted > extracellular space > extracellular matrix > basement membrane. Melanosome. In the lamina beneath the plasma membrane. Identified by mass spectrometry in melanosome fractions from stage I to stage IV. Translocated from the cytoplasm to the cell surface through a Golgi-independent mechanism.

## Images



Western blot - Anti-Annexin-2/ANXA2 antibody [EPR13053(2)(B)] - C-terminal (ab185957)

**All lanes :** Anti-Annexin-2/ANXA2 antibody [EPR13053(2)(B)] - C-terminal (ab185957) at 1/1000 dilution

**Lane 1 :** Wild-type HeLa cell lysate

**Lane 2 :** ANXA2 knockout HeLa cell lysate

**Lane 3 :** HepG2 cell lysate

**Lane 4 :** SH-SY5Y cell lysate

Lysates/proteins at 20 µg per lane.

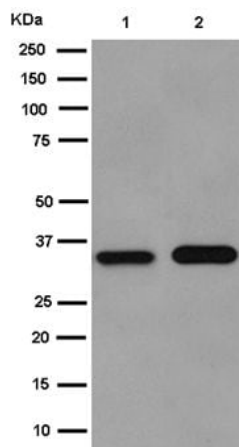
Performed under reducing conditions.

**Predicted band size:** 39 kDa

**Observed band size:** 37 kDa

**Lanes 1 - 4:** Merged signal (red and green). Green - ab185957 observed at 37 kDa. Red - loading control, **ab7291** (Mouse anti-Alpha Tubulin [DM1A]) observed at 55kDa.

ab185957 was shown to react with Annexin-2/ANXA2 in wild-type HeLa cells in western blot. Loss of signal was observed when ANXA2 knockout sample was used. Wild-type and ANXA2 knockout cell lysates were subjected to SDS-PAGE. Membranes were blocked in 3% milk in TBS-T (0.1% Tween<sup>®</sup>) before incubation with ab185957 and **ab7291** (Mouse anti-Alpha Tubulin [DM1A]) overnight at 4°C at a 1 in 1000 Dilution and a 1 in 20000 dilution respectively. Blots were incubated with Goat anti-Rabbit IgG H&L (IRDye<sup>®</sup> 800CW) preabsorbed (**ab216773**) and Goat anti-Mouse IgG H&L (IRDye<sup>®</sup> 680RD) preabsorbed (**ab216776**) secondary antibodies at 1 in 20000 dilution for 1 hour at room temperature before imaging.



Western blot - Anti-Annexin-2/ANXA2 antibody [EPR13053(2)(B)] - C-terminal (ab185957)

**All lanes :** Anti-Annexin-2/ANXA2 antibody [EPR13053(2)(B)] - C-terminal (ab185957) at 1/1000 dilution

**Lane 1 :** K562 cell lysate

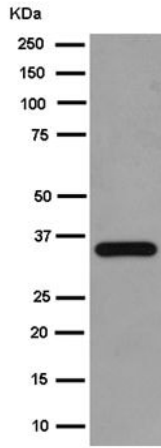
**Lane 2 :** 293 cell lysate

Lysates/proteins at 20 µg per lane.

**Secondary**

**All lanes :** Goat Anti-Rabbit IgG, (H+L), Peroxidase conjugated at 1/1000 dilution

**Predicted band size:** 39 kDa



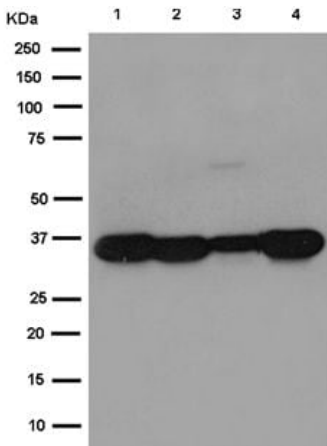
Western blot - Anti-Annexin-2/ANXA2 antibody [EPR13053(2)(B)] - C-terminal (ab185957)

Anti-Annexin-2/ANXA2 antibody [EPR13053(2)(B)] - C-terminal (ab185957) at 1/10000 dilution + HeLa cell lysate at 20  $\mu$ g

**Secondary**

Goat Anti-Rabbit IgG, (H+L), Peroxidase conjugated at 1/1000 dilution

**Predicted band size:** 39 kDa



Western blot - Anti-Annexin-2/ANXA2 antibody [EPR13053(2)(B)] - C-terminal (ab185957)

**All lanes :** Anti-Annexin-2/ANXA2 antibody [EPR13053(2)(B)] - C-terminal (ab185957) at 1/1000 dilution

**Lane 1 :** C6 cell lysate

**Lane 2 :** RAW264.7 cell lysate

**Lane 3 :** PC12 cell lysate

**Lane 4 :** NIH 3T3 cell lysate

Lysates/proteins at 10  $\mu$ g per lane.

**Secondary**

**All lanes :** Goat Anti-Rabbit IgG, (H+L), Peroxidase conjugated at 1/1000 dilution

**Predicted band size:** 39 kDa

### Why choose a recombinant antibody?



**Research with confidence**  
Consistent and reproducible results



**Long-term and scalable supply**  
Recombinant technology



**Success from the first experiment**  
Confirmed specificity



**Ethical standards compliant**  
Animal-free production

Anti-Annexin-2/ANXA2 antibody [EPR13053(2)(B)] -  
C-terminal (ab185957)

**Please note:** All products are "FOR RESEARCH USE ONLY. NOT FOR USE IN DIAGNOSTIC PROCEDURES"

### Our Abpromise to you: Quality guaranteed and expert technical support

---

- Replacement or refund for products not performing as stated on the datasheet
- Valid for 12 months from date of delivery
- Response to your inquiry within 24 hours
- We provide support in Chinese, English, French, German, Japanese and Spanish
- Extensive multi-media technical resources to help you
- We investigate all quality concerns to ensure our products perform to the highest standards

If the product does not perform as described on this datasheet, we will offer a refund or replacement. For full details of the Abpromise, please visit <https://www.abcam.com/abpromise> or contact our technical team.

### Terms and conditions

---

- Guarantee only valid for products bought direct from Abcam or one of our authorized distributors