


Product datasheet

Anti-Annexin-6/ANXA6 antibody ab196942

★★★★★ [4 Abreviews](#) [1 References](#) [5 Images](#)

Overview

Product name	Anti-Annexin-6/ANXA6 antibody
Description	Rabbit polyclonal to Annexin-6/ANXA6
Host species	Rabbit
Tested applications	Suitable for: WB, IHC-P, ICC/IF
Species reactivity	Reacts with: Mouse, Human Predicted to work with: Rat 
Immunogen	Recombinant fragment within Human Annexin-6/ANXA6 (N terminal). The exact sequence is proprietary. Database link: P08133
Positive control	K562, THP-1, MCF7, Mouse spleen, mouse heart, mouse liver, mouse skeletal muscle and mouse lung extracts; Human thyroid cancer, mouse liver and Human lung tissues; A549 cells.
General notes	<p>The Life Science industry has been in the grips of a reproducibility crisis for a number of years. Abcam is leading the way in addressing this with our range of recombinant monoclonal antibodies and knockout edited cell lines for gold-standard validation. Please check that this product meets your needs before purchasing.</p> <p>If you have any questions, special requirements or concerns, please send us an inquiry and/or contact our Support team ahead of purchase. Recommended alternatives for this product can be found below, along with publications, customer reviews and Q&As</p>

Properties

Form	Liquid
Storage instructions	Shipped at 4°C. Store at +4°C short term (1-2 weeks). Upon delivery aliquot. Store at -20°C long term. Avoid freeze / thaw cycle.
Storage buffer	pH: 7.40 Preservative: 0.02% Sodium azide Constituents: 49% PBS, 50% Glycerol (glycerin, glycerine), 0.87% Sodium chloride PBS without Mg ²⁺ and Ca ²⁺ .
Purity	Immunogen affinity purified
Clonality	Polyclonal

Isotype

IgG

Applications

The Abpromise guarantee

Our **Abpromise guarantee** covers the use of ab196942 in the following tested applications.

The application notes include recommended starting dilutions; optimal dilutions/concentrations should be determined by the end user.

Application	Abreviews	Notes
WB	★★★★★ (2)	1/500 - 1/2000. Predicted molecular weight: 76 kDa.
IHC-P		1/50 - 1/200.
ICC/IF	★★★★☆ (2)	1/50 - 1/200.

Target

Function

May associate with CD21. May regulate the release of Ca(2+) from intracellular stores.

Sequence similarities

Belongs to the annexin family.

Contains 8 annexin repeats.

Domain

A pair of annexin repeats may form one binding site for calcium and phospholipid.

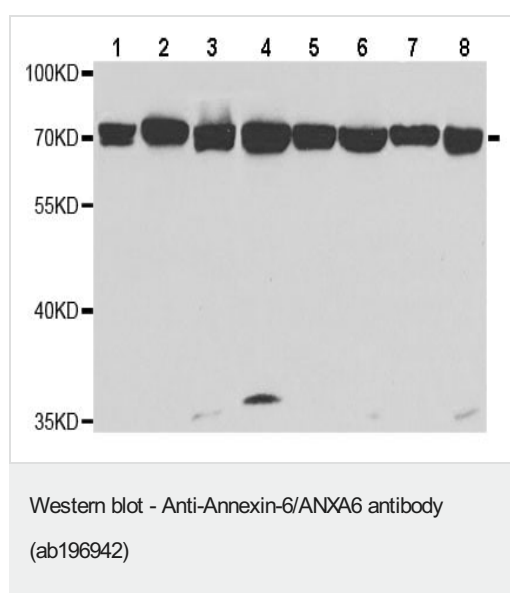
Post-translational modifications

Phosphorylated in response to growth factor stimulation.

Cellular localization

Cytoplasm. Melanosome. Identified by mass spectrometry in melanosome fractions from stage I to stage IV.

Images



All lanes : Anti-Annexin-6/ANXA6 antibody (ab196942) at 1/500 dilution

Lane 1 : K562 cell extract

Lane 2 : THP-1 cell extract

Lane 3 : MCF7 cell extract

Lane 4 : Mouse spleen extract

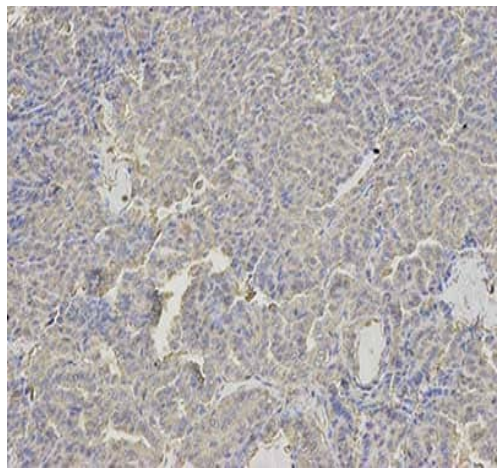
Lane 5 : Mouse heart extract

Lane 6 : Mouse liver extract

Lane 7 : Mouse skeletal muscle extract

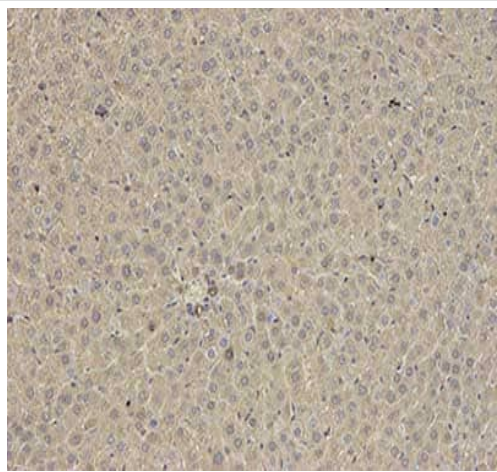
Lane 8 : Mouse lung extract

Predicted band size: 76 kDa



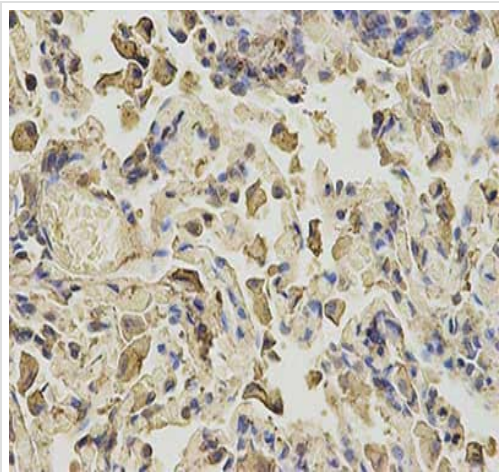
Immunohistochemical analysis of paraffin-embedded Human thyroid cancer tissue labeling Annexin-6/ANXA6 with ab196942 at 1/200 dilution.

Immunohistochemistry (Formalin/PFA-fixed paraffin-embedded sections) - Anti-Annexin-6/ANXA6 antibody (ab196942)



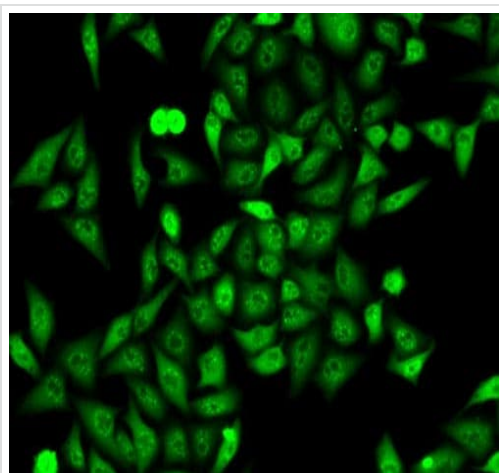
Immunohistochemical analysis of paraffin-embedded Mouse liver tissue labeling Annexin-6/ANXA6 with ab196942 at 1/200 dilution.

Immunohistochemistry (Formalin/PFA-fixed paraffin-embedded sections) - Anti-Annexin-6/ANXA6 antibody (ab196942)



Immunohistochemical analysis of paraffin-embedded Human lung tissue labeling Annexin-6/ANXA6 with ab196942 at 1/200 dilution.

Immunohistochemistry (Formalin/PFA-fixed paraffin-embedded sections) - Anti-Annexin-6/ANXA6 antibody (ab196942)



Immunofluorescent analysis of A549 cells labeling Annexin-6/ANXA6 with ab196942 at 1/50 dilution.

Immunocytochemistry/ Immunofluorescence - Anti-Annexin-6/ANXA6 antibody (ab196942)

Please note: All products are "FOR RESEARCH USE ONLY. NOT FOR USE IN DIAGNOSTIC PROCEDURES"

Our Abpromise to you: Quality guaranteed and expert technical support

- Replacement or refund for products not performing as stated on the datasheet
- Valid for 12 months from date of delivery
- Response to your inquiry within 24 hours
- We provide support in Chinese, English, French, German, Japanese and Spanish
- Extensive multi-media technical resources to help you
- We investigate all quality concerns to ensure our products perform to the highest standards

If the product does not perform as described on this datasheet, we will offer a refund or replacement. For full details of the Abpromise, please visit <https://www.abcam.com/abpromise> or contact our technical team.

Terms and conditions

- Guarantee only valid for products bought direct from Abcam or one of our authorized distributors