

Product datasheet

Anti-Annexin A1/ANXA1 antibody [2F1] ab135256

KO VALIDATED

5 Images

Overview

Product name	Anti-Annexin A1/ANXA1 antibody [2F1]
Description	Mouse monoclonal [2F1] to Annexin A1/ANXA1
Host species	Mouse
Tested applications	Suitable for: WB, IHC-P
Species reactivity	Reacts with: Mouse, Rat, Human, African green monkey
Immunogen	Recombinant fragment corresponding to Human Annexin A1/ANXA1 aa 100-250. Database link: P04083
Positive control	Human Annexin A1 recombinant protein; HeLa, A549, K562, NIH 3T3, C6 and COS7 cell lysates; Human cervical and ovarian cancer tissues.
General notes	<p>The Life Science industry has been in the grips of a reproducibility crisis for a number of years. Abcam is leading the way in addressing this with our range of recombinant monoclonal antibodies and knockout edited cell lines for gold-standard validation. Please check that this product meets your needs before purchasing.</p> <p>If you have any questions, special requirements or concerns, please send us an inquiry and/or contact our Support team ahead of purchase. Recommended alternatives for this product can be found below, along with publications, customer reviews and Q&As</p>

Properties

Form	Liquid
Storage instructions	Shipped at 4°C. Store at +4°C short term (1-2 weeks). Store at -20°C long term.
Storage buffer	Preservative: 0.05% Sodium azide Constituent: 99% PBS Contains 0.5% protein stabilizer.
Purity	Protein G purified
Purification notes	Purified from tissue culture supernatant.
Clonality	Monoclonal
Clone number	2F1

Applications

The Abpromise guarantee

Our **Abpromise guarantee** covers the use of ab135256 in the following tested applications.

The application notes include recommended starting dilutions; optimal dilutions/concentrations should be determined by the end user.

Application	Abreviews	Notes
WB		1/500 - 1/2000. Predicted molecular weight: 39 kDa.
IHC-P		1/200 - 1/1000.

Target

Function

Calcium/phospholipid-binding protein which promotes membrane fusion and is involved in exocytosis. This protein regulates phospholipase A2 activity. It seems to bind from two to four calcium ions with high affinity.

Sequence similarities

Belongs to the annexin family.
Contains 4 annexin repeats.

Domain

A pair of annexin repeats may form one binding site for calcium and phospholipid.

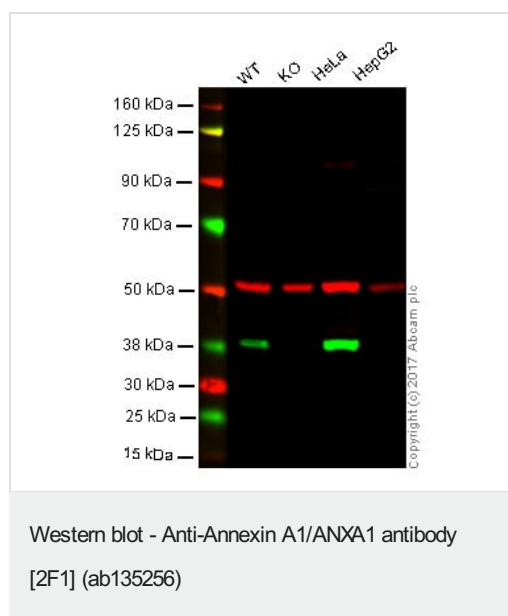
Post-translational modifications

Phosphorylated by protein kinase C, epidermal growth factor receptor/kinase and TRPM7. Phosphorylation results in loss of the inhibitory activity.

Cellular localization

Nucleus. Cytoplasm. Cell projection > cilium. Basolateral cell membrane. Found in the cilium, nucleus and basolateral cell membrane of ciliated cells in the tracheal endothelium (By similarity). Found in the cytoplasm of type II pneumocytes and alveolar macrophages.

Images



Lane 1: Wild type HAP1 whole cell lysate (20 µg)

Lane 2: Annexin A1 knockout HAP1 whole cell lysate (20 µg)

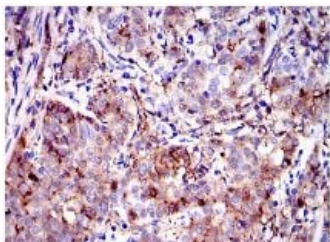
Lane 3: HeLa whole cell lysate (20 µg)

Lane 4: HepG2 whole cell lysate (20 µg)

Lanes 1 - 4: Merged signal (red and green). Green - ab135256 observed at 38 kDa. Red - loading control, **ab176560**, observed at 50 kDa.

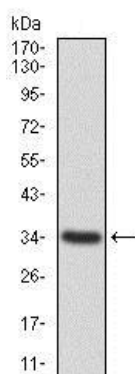
ab135256 was shown to specifically react with Annexin A1 when Annexin A1 knockout samples were used. Wild-type and Annexin A1 knockout samples were subjected to SDS-PAGE. Ab135256 and **ab176560** (Rabbit anti alpha Tubulin loading control) were incubated overnight at 4°C at 1/500 dilution and 1/10000 dilution

respectively. Blots were developed with Goat anti-Mouse IgG H&L (IRDye® 800CW) preabsorbed **ab216772** and Goat anti-Rabbit IgG H&L (IRDye® 680RD) preabsorbed **ab216777** secondary antibodies at 1/10000 dilution for 1 hour at room temperature before imaging.



Immunohistochemistry (Formalin/PFA-fixed paraffin-embedded sections) - Anti-Annexin A1/ANXA1 antibody [2F1] (ab135256)

Immunohistochemical analysis of paraffin-embedded Human cervical cancer tissue labelling Annexin A1 with ab135256 at 1/200 dilution followed by DAB staining.

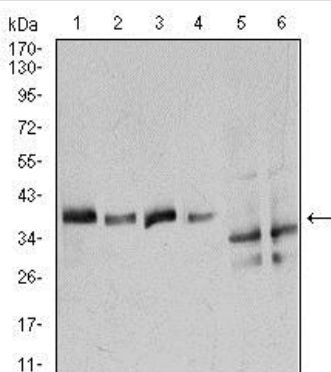


Western blot - Anti-Annexin A1/ANXA1 antibody [2F1] (ab135256)

Anti-Annexin A1/ANXA1 antibody [2F1] (ab135256) at 1/500 dilution + Human Annexin A1 recombinant protein.

Predicted band size: 39 kDa

Expected MW of recombinant fragment is 33.7 kDa.



Western blot - Anti-Annexin A1/ANXA1 antibody [2F1] (ab135256)

All lanes : Anti-Annexin A1/ANXA1 antibody [2F1] (ab135256) at 1/500 dilution

Lane 1 : HeLa cell lysate

Lane 2 : A549 cell lysate

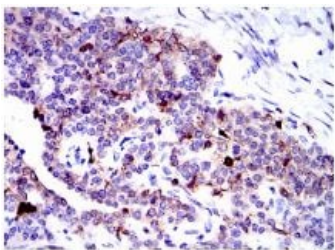
Lane 3 : K562 cell lysate

Lane 4 : NIH 3T3 cell lysate

Lane 5 : C6 cell lysate

Lane 6 : COS7 cell lysate

Predicted band size: 39 kDa



Immunohistochemical analysis of paraffin-embedded Human ovarian cancer tissue labelling Annexin A1 with ab135256 at 1/200 dilution followed by DAB staining.

Immunohistochemistry (Formalin/PFA-fixed paraffin-embedded sections) - Anti-Annexin A1/ANXA1 antibody [2F1] (ab135256)

Please note: All products are "FOR RESEARCH USE ONLY. NOT FOR USE IN DIAGNOSTIC PROCEDURES"

Our Abpromise to you: Quality guaranteed and expert technical support

- Replacement or refund for products not performing as stated on the datasheet
- Valid for 12 months from date of delivery
- Response to your inquiry within 24 hours
- We provide support in Chinese, English, French, German, Japanese and Spanish
- Extensive multi-media technical resources to help you
- We investigate all quality concerns to ensure our products perform to the highest standards

If the product does not perform as described on this datasheet, we will offer a refund or replacement. For full details of the Abpromise, please visit <https://www.abcam.com/abpromise> or contact our technical team.

Terms and conditions

- Guarantee only valid for products bought direct from Abcam or one of our authorized distributors