


# Anti-Annexin A1/ANXA1 antibody ab137745

[2 References](#) [5 Images](#)

### Overview

<b>Product name</b>	Anti-Annexin A1/ANXA1 antibody
<b>Description</b>	Rabbit polyclonal to Annexin A1/ANXA1
<b>Host species</b>	Rabbit
<b>Tested applications</b>	<b>Suitable for:</b> WB, ICC/IF, IHC-P
<b>Species reactivity</b>	<b>Reacts with:</b> Mouse, Human <b>Predicted to work with:</b> Rat, Rabbit, Cow, Pig 
<b>Immunogen</b>	Recombinant fragment corresponding to Human Annexin A1/ANXA1 aa 24-346 (internal sequence). Database link: <a href="#">P04083</a>
<b>Positive control</b>	A431, H1299, HeLa, MOLT4, NIH-3T3 and JC whole cell lysates; HeLa cells; N87 xenograft tissue.
<b>General notes</b>	<p>The Life Science industry has been in the grips of a reproducibility crisis for a number of years. Abcam is leading the way in addressing this with our range of recombinant monoclonal antibodies and knockout edited cell lines for gold-standard validation. Please check that this product meets your needs before purchasing.</p> <p>If you have any questions, special requirements or concerns, please send us an inquiry and/or contact our Support team ahead of purchase. Recommended alternatives for this product can be found below, along with publications, customer reviews and Q&amp;As</p>

### Properties

<b>Form</b>	Liquid
<b>Storage instructions</b>	Shipped at 4°C. Upon delivery aliquot. Store at -20°C or -80°C. Avoid freeze / thaw cycle.
<b>Storage buffer</b>	pH: 7.00 Preservative: 0.025% Proclin 300 Constituents: 79% PBS, 20% Glycerol (glycerin, glycerine)
<b>Purity</b>	Immunogen affinity purified
<b>Clonality</b>	Polyclonal
<b>Isotype</b>	IgG

## Applications

### The Abpromise guarantee

Our **Abpromise guarantee** covers the use of ab137745 in the following tested applications.

The application notes include recommended starting dilutions; optimal dilutions/concentrations should be determined by the end user.

Application	Abreviews	Notes
WB		1/500 - 1/3000. Predicted molecular weight: 39 kDa.
ICC/IF		1/100 - 1/1000.
IHC-P		1/100 - 1/1000. Perform heat mediated antigen retrieval with citrate buffer pH 6 before commencing with IHC staining protocol. Antigen retrieval using heat mediated Tris/EDTA buffer (pH 8.0) is also possible.

## Target

### Function

Calcium/phospholipid-binding protein which promotes membrane fusion and is involved in exocytosis. This protein regulates phospholipase A2 activity. It seems to bind from two to four calcium ions with high affinity.

### Sequence similarities

Belongs to the annexin family.  
Contains 4 annexin repeats.

### Domain

A pair of annexin repeats may form one binding site for calcium and phospholipid.

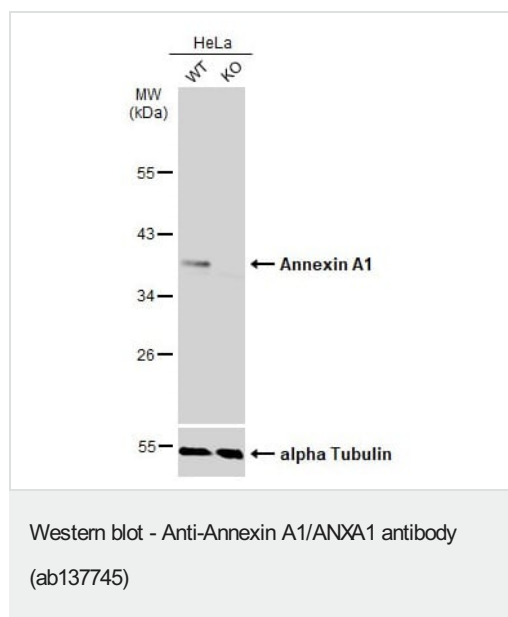
### Post-translational modifications

Phosphorylated by protein kinase C, epidermal growth factor receptor/kinase and TRPM7. Phosphorylation results in loss of the inhibitory activity.

### Cellular localization

Nucleus. Cytoplasm. Cell projection > cilium. Basolateral cell membrane. Found in the cilium, nucleus and basolateral cell membrane of ciliated cells in the tracheal endothelium (By similarity). Found in the cytoplasm of type II pneumocytes and alveolar macrophages.

## Images



**All lanes :** Anti-Annexin A1/ANXA1 antibody (ab137745) at 1/30000 dilution

**Lane 1 :** Wild-type HeLa whole cell lysate

**Lane 2 :** Annexin A1/ANXA1 knockout HeLa whole cell lysate

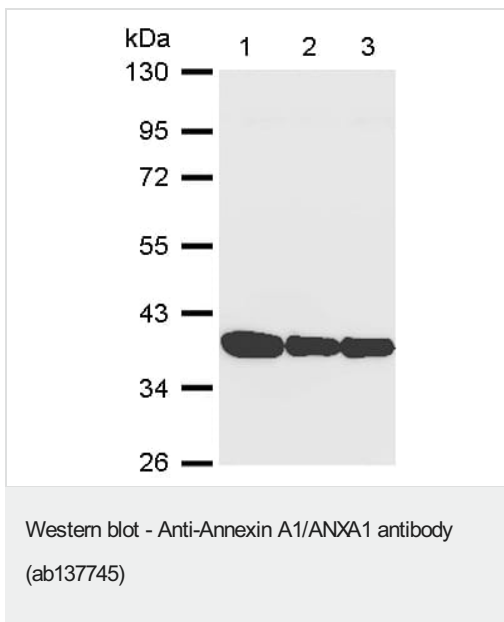
Lysates/proteins at 30 µg per lane.

### Secondary

**All lanes :** HRP-conjugated anti-rabbit IgG

**Predicted band size:** 39 kDa

#### 10% SDS-PAGE



**All lanes :** Anti-Annexin A1/ANXA1 antibody (ab137745) at 1/1000 dilution

**Lane 1 :** A431 cell lysate

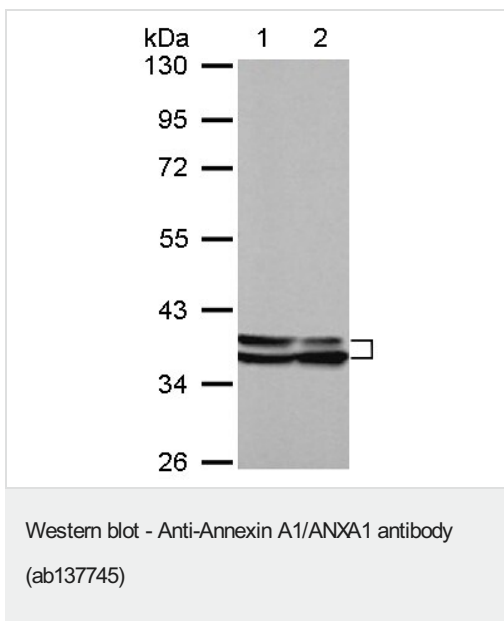
**Lane 2 :** H1299 cell lysate

**Lane 3 :** HeLa cell lysate

Lysates/proteins at 30 µg per lane.

**Predicted band size:** 39 kDa

#### 10% SDS PAGE



**All lanes :** Anti-Annexin A1/ANXA1 antibody (ab137745) at 1/10000 dilution

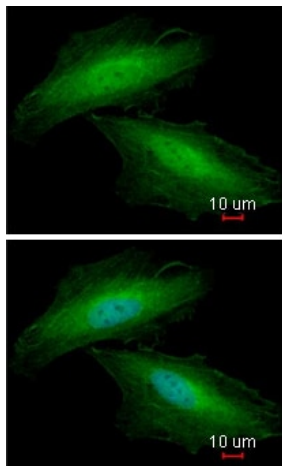
**Lane 1 :** NIH-3T3 cell lysate

**Lane 2 :** JC cell lysate

Lysates/proteins at 30 µg per lane.

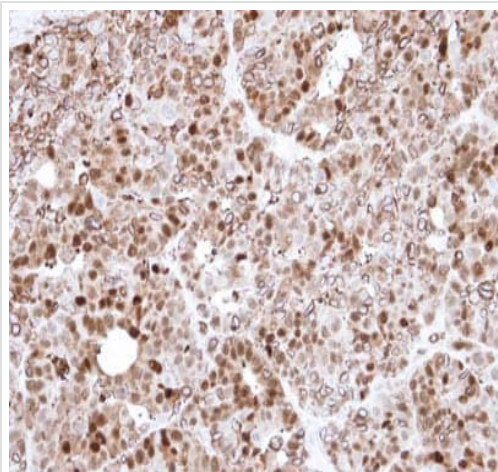
**Predicted band size:** 39 kDa

#### 10% SDS PAGE



Immunofluorescent analysis of paraformaldehyde-fixed HeLa cells labelling Annexin A1 with ab137745 at 1/200 dilution. Lower image shows cells co-stained with Hoechst 33342.

Immunocytochemistry/ Immunofluorescence - Anti-Annexin A1/ANXA1 antibody (ab137745)



Immunohistochemical analysis of paraffin-embedded N87 Xenograft, labelling Annexin A1 using ab137745 at 1/500 dilution.

Immunohistochemistry (Formalin/PFA-fixed paraffin-embedded sections) - Anti-Annexin A1/ANXA1 antibody (ab137745)

**Please note:** All products are "FOR RESEARCH USE ONLY. NOT FOR USE IN DIAGNOSTIC PROCEDURES"

### Our Abpromise to you: Quality guaranteed and expert technical support

- Replacement or refund for products not performing as stated on the datasheet
- Valid for 12 months from date of delivery
- Response to your inquiry within 24 hours
- We provide support in Chinese, English, French, German, Japanese and Spanish
- Extensive multi-media technical resources to help you
- We investigate all quality concerns to ensure our products perform to the highest standards

If the product does not perform as described on this datasheet, we will offer a refund or replacement. For full details of the Abpromise, please visit <https://www.abcam.com/abpromise> or contact our technical team.

## Terms and conditions

---

- Guarantee only valid for products bought direct from Abcam or one of our authorized distributors