


Product datasheet

Anti-Annexin A1/ANXA1 antibody ab196830

[2 References](#) [5 Images](#)

Overview

Product name	Anti-Annexin A1/ANXA1 antibody
Description	Rabbit polyclonal to Annexin A1/ANXA1
Host species	Rabbit
Tested applications	Suitable for: IHC-P, WB, ICC/IF
Species reactivity	Reacts with: Mouse, Rat, Human Predicted to work with: Rabbit, Horse, Cow, Chimpanzee, Orangutan 
Immunogen	Recombinant full length protein corresponding to Human Annexin A1/ANXA1 aa 1 to the C-terminus. Database link: P04083 Run BLAST with Run BLAST with
Positive control	HeLa cells and cell lysates. NIH/3T3 cell lysates. Human endometrial cancer tissue, Human thyroid cancer tissue and Rat brain tissue.
General notes	<p>The Life Science industry has been in the grips of a reproducibility crisis for a number of years. Abcam is leading the way in addressing this with our range of recombinant monoclonal antibodies and knockout edited cell lines for gold-standard validation. Please check that this product meets your needs before purchasing.</p> <p>If you have any questions, special requirements or concerns, please send us an inquiry and/or contact our Support team ahead of purchase. Recommended alternatives for this product can be found below, along with publications, customer reviews and Q&As</p>

Properties

Form	Liquid
Storage instructions	Shipped at 4°C. Store at +4°C short term (1-2 weeks). Upon delivery aliquot. Store at -20°C long term. Avoid freeze / thaw cycle.
Storage buffer	pH: 7.40 Preservative: 0.02% Sodium azide Constituents: 49% PBS, 50% Glycerol (glycerin, glycerine), 0.87% Sodium chloride PBS without Mg ²⁺ and Ca ²⁺ .
Purity	Immunogen affinity purified

Clonality	Polyclonal
Isotype	IgG

Applications

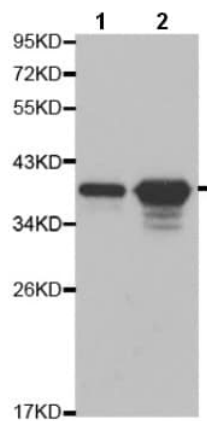
The Abpromise guarantee Our **Abpromise guarantee** covers the use of ab196830 in the following tested applications. The application notes include recommended starting dilutions; optimal dilutions/concentrations should be determined by the end user.

Application	Abreviews	Notes
IHC-P		1/50 - 1/100.
WB		1/500 - 1/2000. Predicted molecular weight: 39 kDa.
ICC/IF		1/50 - 1/200.

Target

Function	Calcium/phospholipid-binding protein which promotes membrane fusion and is involved in exocytosis. This protein regulates phospholipase A2 activity. It seems to bind from two to four calcium ions with high affinity.
Sequence similarities	Belongs to the annexin family. Contains 4 annexin repeats.
Domain	A pair of annexin repeats may form one binding site for calcium and phospholipid.
Post-translational modifications	Phosphorylated by protein kinase C, epidermal growth factor receptor/kinase and TRPM7. Phosphorylation results in loss of the inhibitory activity.
Cellular localization	Nucleus. Cytoplasm. Cell projection > cilium. Basolateral cell membrane. Found in the cilium, nucleus and basolateral cell membrane of ciliated cells in the tracheal endothelium (By similarity). Found in the cytoplasm of type II pneumocytes and alveolar macrophages.

Images



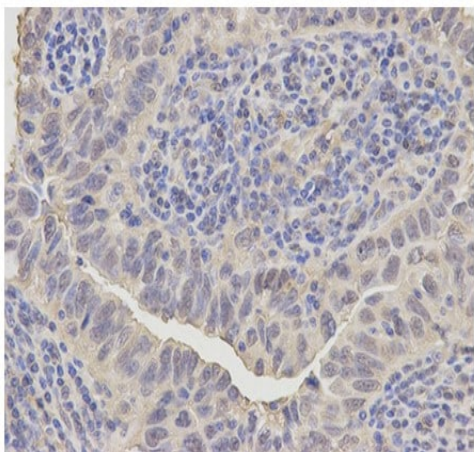
Western blot - Anti-Annexin A1/ANXA1 antibody (ab196830)

All lanes : Anti-Annexin A1/ANXA1 antibody (ab196830) at 1/500 dilution

Lane 1 : HeLa cell lysates

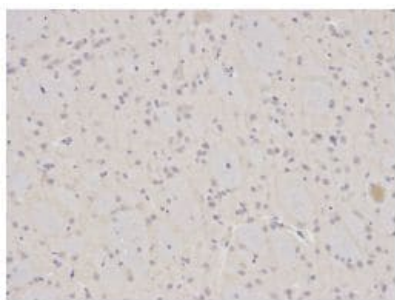
Lane 2 : NIH/3T3 cell lysates

Predicted band size: 39 kDa



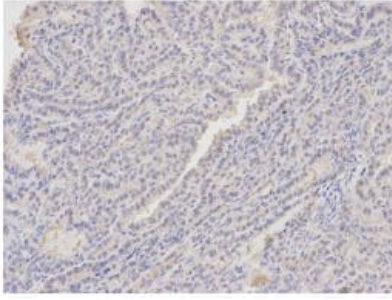
Immunohistochemistry (Formalin/PFA-fixed paraffin-embedded sections) - Anti-Annexin A1/ANXA1 antibody (ab196830)

Immunohistochemical analysis of paraffin-embedded Human endometrial cancer tissue labeling Annexin A1 with ab196830 at 1/200 dilution (400x lens).



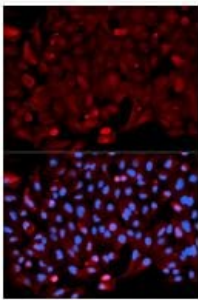
Immunohistochemistry (Formalin/PFA-fixed paraffin-embedded sections) - Anti-Annexin A1/ANXA1 antibody (ab196830)

Immunohistochemical analysis of paraffin-embedded Human thyroid cancer tissue labeling Annexin A1 with ab196830 at 1/200 dilution (200x lens).



Immunohistochemistry (Formalin/PFA-fixed paraffin-embedded sections) - Anti-Annexin A1/ANXA1 antibody (ab196830)

Immunohistochemical analysis of paraffin-embedded Rat brain tissue labeling Annexin A1 with ab196830 at 1/200 dilution (200x lens).



Immunocytochemistry/ Immunofluorescence - Anti-Annexin A1/ANXA1 antibody (ab196830)

Immunofluorescent analysis of HeLa cells labeling Annexin A1 with ab196830 at 1/50 dilution. Blue: DAPI for nuclear staining.

Please note: All products are "FOR RESEARCH USE ONLY. NOT FOR USE IN DIAGNOSTIC PROCEDURES"

Our Abpromise to you: Quality guaranteed and expert technical support

- Replacement or refund for products not performing as stated on the datasheet
- Valid for 12 months from date of delivery
- Response to your inquiry within 24 hours
- We provide support in Chinese, English, French, German, Japanese and Spanish
- Extensive multi-media technical resources to help you
- We investigate all quality concerns to ensure our products perform to the highest standards

If the product does not perform as described on this datasheet, we will offer a refund or replacement. For full details of the Abpromise, please visit <https://www.abcam.com/abpromise> or contact our technical team.

Terms and conditions

- Guarantee only valid for products bought direct from Abcam or one of our authorized distributors