

Anti-Annexin A1/ANXA1 antibody ab41830

[1 Image](#)

Overview

Product name	Anti-Annexin A1/ANXA1 antibody
Description	Rabbit polyclonal to Annexin A1/ANXA1
Host species	Rabbit
Tested applications	Suitable for: IHC-P
Species reactivity	Reacts with: Human
Immunogen	Synthetic peptide within Human Annexin A1/ANXA1 aa 1-100 (N terminal). The exact sequence is proprietary. Database link: P04083
Positive control	Human placenta.
General notes	<p>This product is FOR RESEARCH USE ONLY. For commercial use, please contact partnerships@abcam.com.</p> <p>The Life Science industry has been in the grips of a reproducibility crisis for a number of years. Abcam is leading the way in addressing this with our range of recombinant monoclonal antibodies and knockout edited cell lines for gold-standard validation. Please check that this product meets your needs before purchasing.</p> <p>If you have any questions, special requirements or concerns, please send us an inquiry and/or contact our Support team ahead of purchase. Recommended alternatives for this product can be found below, along with publications, customer reviews and Q&As</p>

Properties

Form	Liquid
Storage instructions	Shipped at 4°C. Upon delivery aliquot and store at -20°C. Avoid freeze / thaw cycles.
Storage buffer	pH: 7.60 Preservative: 0.1% Sodium azide Constituents: PBS, 1% BSA
Purity	Immunogen affinity purified
Clonality	Polyclonal
Isotype	IgG

Applications

The Abpromise guarantee

Our **Abpromise guarantee** covers the use of ab41830 in the following tested applications.

The application notes include recommended starting dilutions; optimal dilutions/concentrations should be determined by the end user.

Application	Abreviews	Notes
IHC-P		

Application notes

IHC-P: 1/25 for 30 min at RT. Perform heat mediated antigen retrieval before commencing with IHC staining protocol.

Not yet tested in other applications.

Optimal dilutions/concentrations should be determined by the end user.

Target

Function

Calcium/phospholipid-binding protein which promotes membrane fusion and is involved in exocytosis. This protein regulates phospholipase A2 activity. It seems to bind from two to four calcium ions with high affinity.

Sequence similarities

Belongs to the annexin family.
Contains 4 annexin repeats.

Domain

A pair of annexin repeats may form one binding site for calcium and phospholipid.

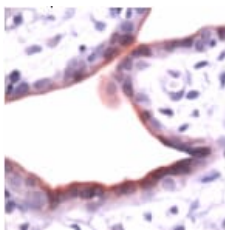
Post-translational modifications

Phosphorylated by protein kinase C, epidermal growth factor receptor/kinase and TRPM7. Phosphorylation results in loss of the inhibitory activity.

Cellular localization

Nucleus. Cytoplasm. Cell projection > cilium. Basolateral cell membrane. Found in the cilium, nucleus and basolateral cell membrane of ciliated cells in the tracheal endothelium (By similarity). Found in the cytoplasm of type II pneumocytes and alveolar macrophages.

Images



Ab41830 staining human Annexin I in human placenta by formalin fixed paraffin embedded immunohistochemistry at 1/25 dilution.

Immunohistochemistry (Formalin/PFA-fixed paraffin-embedded sections) - Anti-Annexin A1/ANXA1 antibody (ab41830)

Please note: All products are "FOR RESEARCH USE ONLY. NOT FOR USE IN DIAGNOSTIC PROCEDURES"

Our Abpromise to you: Quality guaranteed and expert technical support

- Replacement or refund for products not performing as stated on the datasheet
- Valid for 12 months from date of delivery
- Response to your inquiry within 24 hours
- We provide support in Chinese, English, French, German, Japanese and Spanish
- Extensive multi-media technical resources to help you
- We investigate all quality concerns to ensure our products perform to the highest standards

If the product does not perform as described on this datasheet, we will offer a refund or replacement. For full details of the Abpromise, please visit <https://www.abcam.com/abpromise> or contact our technical team.

Terms and conditions

- Guarantee only valid for products bought direct from Abcam or one of our authorized distributors