


Product datasheet

Anti-Annexin A3/ANXA3 antibody ab127924

[3 References](#) [2 Images](#)

Overview

Product name	Anti-Annexin A3/ANXA3 antibody
Description	Rabbit polyclonal to Annexin A3/ANXA3
Host species	Rabbit
Tested applications	Suitable for: WB, IHC-P
Species reactivity	Reacts with: Rat, Human Predicted to work with: Rabbit, Horse 
Immunogen	Synthetic peptide corresponding to Rat Annexin A3/ANXA3 aa 124-141 (internal sequence). Sequence: RQMKEISQAYYTAYKKNL Database link: P14669 Run BLAST with Run BLAST with
Positive control	Rat brain, lung, testis and skeletal muscle lysates; MCF7, HeLa and SW620 cell lysates; Human mammary cancer tissue.
General notes	<p>The Life Science industry has been in the grips of a reproducibility crisis for a number of years. Abcam is leading the way in addressing this with our range of recombinant monoclonal antibodies and knockout edited cell lines for gold-standard validation. Please check that this product meets your needs before purchasing.</p> <p>If you have any questions, special requirements or concerns, please send us an inquiry and/or contact our Support team ahead of purchase. Recommended alternatives for this product can be found below, along with publications, customer reviews and Q&As</p>

Properties

Form	Liquid
Storage instructions	Shipped at 4°C. Store at +4°C short term (1-2 weeks). Upon delivery aliquot. Store at -20°C long term.
Storage buffer	Preservatives: 0.025% Sodium azide, 0.025% Thimerosal (merthiolate) Constituents: 2.5% BSA, 0.45% Sodium chloride, 0.1% Dibasic monohydrogen sodium phosphate
Purity	Immunogen affinity purified

Clonality	Polyclonal
Isotype	IgG

Applications

The Abpromise guarantee Our **Abpromise guarantee** covers the use of ab127924 in the following tested applications.

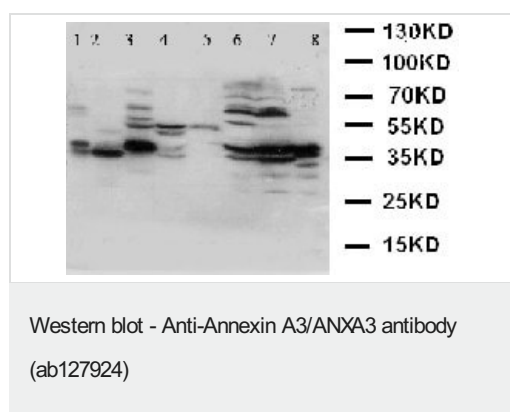
The application notes include recommended starting dilutions; optimal dilutions/concentrations should be determined by the end user.

Application	Abreviews	Notes
WB		Use a concentration of 1 µg/ml. Predicted molecular weight: 36 kDa.
IHC-P		Use a concentration of 1 µg/ml. Perform heat mediated antigen retrieval before commencing with IHC staining protocol.

Target

Function	Inhibitor of phospholipase A2, also possesses anti-coagulant properties. Also cleaves the cyclic bond of inositol 1,2-cyclic phosphate to form inositol 1-phosphate.
Sequence similarities	Belongs to the annexin family. Contains 4 annexin repeats.
Domain	A pair of annexin repeats may form one binding site for calcium and phospholipid.

Images



All lanes : Anti-Annexin A3/ANXA3 antibody (ab127924) at 1 µg/ml

Lane 1 : Rat Brain Tissue Lysate

Lane 2 : Rat Lung Tissue Lysate

Lane 3 : Rat Testicular Tissue Lysate

Lane 4 : Rat Skeletal Muscle Tissue Lysate

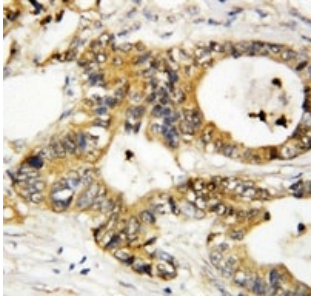
Lane 5 : Rabbit IgG (55KD)

Lane 6 : MCF7 Cell Lysate

Lane 7 : HeLa Cell Lysate

Lane 8 : SW620 Cell Lysate

Predicted band size: 36 kDa



ab127924 at 1 µg/ml staining Annexin A3/ANXA3 in Paraffin-embedded Human Mammary Cancer Tissue by Immunohistochemistry.

Immunohistochemistry (Formalin/PFA-fixed paraffin-embedded sections) - Anti-Annexin A3/ANXA3 antibody (ab127924)

Please note: All products are "FOR RESEARCH USE ONLY. NOT FOR USE IN DIAGNOSTIC PROCEDURES"

Our Abpromise to you: Quality guaranteed and expert technical support

- Replacement or refund for products not performing as stated on the datasheet
- Valid for 12 months from date of delivery
- Response to your inquiry within 24 hours
- We provide support in Chinese, English, French, German, Japanese and Spanish
- Extensive multi-media technical resources to help you
- We investigate all quality concerns to ensure our products perform to the highest standards

If the product does not perform as described on this datasheet, we will offer a refund or replacement. For full details of the Abpromise, please visit <https://www.abcam.com/abpromise> or contact our technical team.

Terms and conditions

- Guarantee only valid for products bought direct from Abcam or one of our authorized distributors