

## Product datasheet

### Anti-ANP32C/PP32R1 antibody [EPR13354] ab181242

Recombinant RabMAb

5 Images

#### Overview

<b>Product name</b>	Anti-ANP32C/PP32R1 antibody [EPR13354]
<b>Description</b>	Rabbit monoclonal [EPR13354] to ANP32C/PP32R1
<b>Host species</b>	Rabbit
<b>Specificity</b>	This antibody is specific to the ANP32C/PP32R1 protein (UniProt: O43423). There is no observed cross reactivity to the Atrial Natriuretic Peptide (UniProt: P01160).
<b>Tested applications</b>	<b>Suitable for:</b> Flow Cyt (Intra), WB, ICC/IF, IP
<b>Species reactivity</b>	<b>Reacts with:</b> Human
<b>Immunogen</b>	Recombinant fragment. This information is proprietary to Abcam and/or its suppliers.
<b>Positive control</b>	HUVEC, PC-3 and BxPC-3 cell lysates; MCF-7 cell lysate; PC-3 and MCF-7 cells.
<b>General notes</b>	<p>This product is a recombinant monoclonal antibody, which offers several advantages including:</p> <ul style="list-style-type: none"><li>- High batch-to-batch consistency and reproducibility</li><li>- Improved sensitivity and specificity</li><li>- Long-term security of supply</li><li>- Animal-free production</li></ul> <p>For more information <a href="#">see here</a>.</p> <p>Our RabMAb<sup>®</sup> technology is a patented hybridoma-based technology for making rabbit monoclonal antibodies. For details on our patents, please refer to <a href="#">RabMAb<sup>®</sup> patents</a>.</p>

#### Properties

<b>Form</b>	Liquid
<b>Storage instructions</b>	Shipped at 4°C. Store at +4°C short term (1-2 weeks). Upon delivery aliquot. Store at -20°C long term. Avoid freeze / thaw cycle.
<b>Storage buffer</b>	Preservative: 0.01% Sodium azide Constituents: 59% PBS, 40% Glycerol (glycerin, glycerine), 0.05% BSA
<b>Purity</b>	Tissue culture supernatant
<b>Clonality</b>	Monoclonal
<b>Clone number</b>	EPR13354
<b>Isotype</b>	IgG

## Applications

### The Abpromise guarantee

Our **Abpromise guarantee** covers the use of ab181242 in the following tested applications.

The application notes include recommended starting dilutions; optimal dilutions/concentrations should be determined by the end user.

Application	Abreviews	Notes
Flow Cyt (Intra)		1/20. <b>ab172730</b> - Rabbit monoclonal IgG, is suitable for use as an isotype control with this antibody.
WB		1/10000 - 1/50000. Detects a band of approximately 27 kDa (predicted molecular weight: 27 kDa).
ICC/IF		1/100 - 1/250.
IP		1/30 - 1/70.

## Target

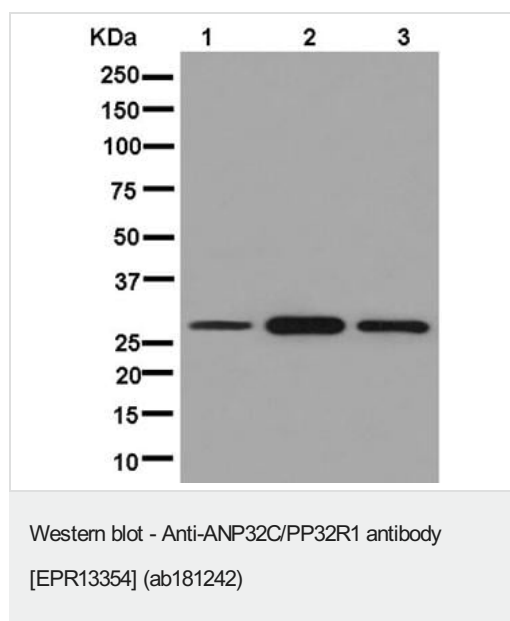
### Tissue specificity

Expressed in activated stem cells, such as mobilized CD34+ cells and cord blood CD34+ cells, but not in resting bone marrow CD34+ cells. Expressed in a variety of neoplastic cell lines, mainly in prostatic adenocarcinoma cell lines. Not expressed in normal prostatic tissue.

### Sequence similarities

Belongs to the ANP32 family.  
Contains 4 LRR (leucine-rich) repeats.

## Images



**All lanes** : Anti-ANP32C/PP32R1 antibody [EPR13354] (ab181242) at 1/10000 dilution

**Lane 1** : HUVEC cell lysate

**Lane 2** : PC-3 cell lysate

**Lane 3** : BxPC-3 cell lysate

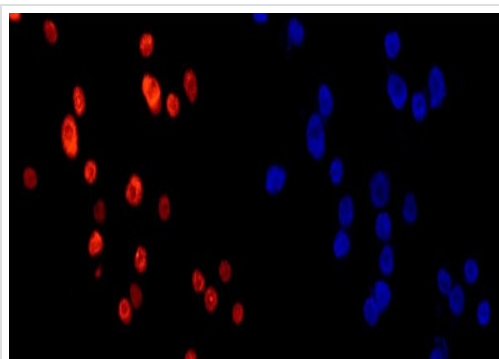
Lysates/proteins at 20 µg per lane.

### Secondary

**All lanes** : Goat anti-rabbit IgG, (H+L), peroxidase conjugate at 1/1000 dilution

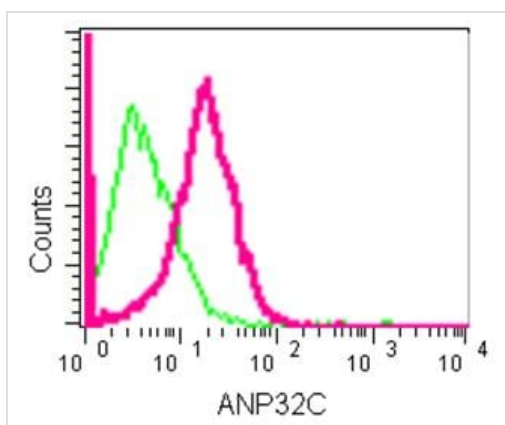
**Predicted band size:** 27 kDa

**Observed band size:** 27 kDa



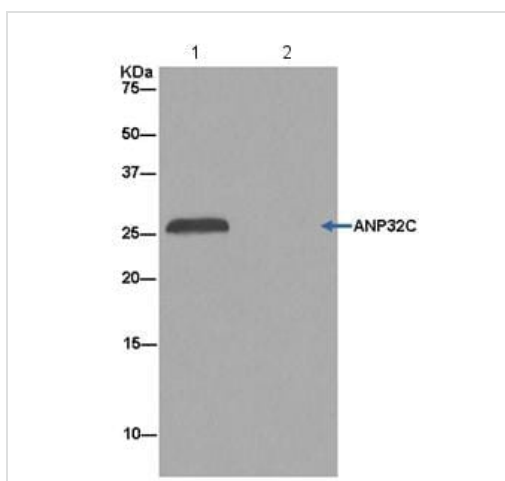
Immunocytochemistry/ Immunofluorescence - Anti-ANP32C/PP32R1 antibody [EPR13354] (ab181242)

Immunofluorescent analysis of 4% paraformaldehyde-fixed PC-3 cells labeling ANP32C/PP32R1 with ab181242 at 1/250 dilution followed by Goat anti rabbit IgG (Alexa Fluor®555) secondary antibody at 1/200 dilution. Counter stained with Dapi (blue).



Flow Cytometry (Intracellular) - Anti-ANP32C/PP32R1 antibody [EPR13354] (ab181242)

Intracellular flow cytometric analysis of 2% paraformaldehyde-fixed MCF-7 cells labeling ANP32C/PP32R1 with ab181242 at 1/20 dilution (red), compared to a Rabbit monoclonal IgG isotype control (green), followed by Goat anti rabbit IgG (FITC) secondary antibody at 1/150 dilution.



Immunoprecipitation - Anti-ANP32C/PP32R1 antibody [EPR13354] (ab181242)

Western blot analysis of ANP32C/PP32R1 in MCF-7 cell lysate immunoprecipitated with ab181242 at 1/50 dilution.

Secondary: Anti-Rabbit IgG (HRP), specific to the non-reduced form of IgG at 1/1500 dilution.

### Why choose a recombinant antibody?



**Research with confidence**  
Consistent and reproducible results



**Long-term and scalable supply**  
Recombinant technology



**Success from the first experiment**  
Confirmed specificity



**Ethical standards compliant**  
Animal-free production

Anti-ANP32C/PP32R1 antibody [EPR13354]  
(ab181242)

**Please note:** All products are "FOR RESEARCH USE ONLY. NOT FOR USE IN DIAGNOSTIC PROCEDURES"

### Our Abpromise to you: Quality guaranteed and expert technical support

---

- Replacement or refund for products not performing as stated on the datasheet
- Valid for 12 months from date of delivery
- Response to your inquiry within 24 hours
- We provide support in Chinese, English, French, German, Japanese and Spanish
- Extensive multi-media technical resources to help you
- We investigate all quality concerns to ensure our products perform to the highest standards

If the product does not perform as described on this datasheet, we will offer a refund or replacement. For full details of the Abpromise, please visit <https://www.abcam.com/abpromise> or contact our technical team.

### Terms and conditions

---

- Guarantee only valid for products bought direct from Abcam or one of our authorized distributors