


Anti-ANT4 antibody ab136959

★★★★★ [1 Abreviews](#) [1 Image](#)

Overview

Product name	Anti-ANT4 antibody
Description	Rabbit polyclonal to ANT4
Host species	Rabbit
Tested applications	Suitable for: WB
Species reactivity	Reacts with: Human Predicted to work with: Mouse 
Immunogen	Synthetic peptide corresponding to Human ANT4 (internal sequence).
Positive control	K562 cell lysate.
General notes	<p>The Life Science industry has been in the grips of a reproducibility crisis for a number of years. Abcam is leading the way in addressing this with our range of recombinant monoclonal antibodies and knockout edited cell lines for gold-standard validation. Please check that this product meets your needs before purchasing.</p> <p>If you have any questions, special requirements or concerns, please send us an inquiry and/or contact our Support team ahead of purchase. Recommended alternatives for this product can be found below, along with publications, customer reviews and Q&As</p>

Properties

Form	Liquid
Storage instructions	Shipped at 4°C. Store at -20°C.
Storage buffer	<p>pH: 7.40</p> <p>Preservative: 0.02% Sodium azide</p> <p>Constituents: 49% PBS, 50% Glycerol (glycerin, glycerine), 0.88% Sodium chloride</p> <p>PBS is without Mg²⁺ and Ca²⁺</p>
Purity	Immunogen affinity purified
Purification notes	ab136959 was affinity-purified from rabbit antiserum by immunogenic peptide affinity-chromatography.
Clonality	Polyclonal
Isotype	IgG

Applications

The Abpromise guarantee

Our **Abpromise guarantee** covers the use of ab136959 in the following tested applications.

The application notes include recommended starting dilutions; optimal dilutions/concentrations should be determined by the end user.

Application	Abreviews	Notes
WB	★★★★★ (1)	1/500 - 1/1000. Predicted molecular weight: 35 kDa.

Target

Function

Catalyzes the exchange of ADP and ATP across the mitochondrial inner membrane. May serve to mediate energy generating and energy consuming processes in the distal flagellum, possibly as a nucleotide shuttle between flagellar glycolysis, protein phosphorylation and mechanisms of motility.

Tissue specificity

Expressed in brain, liver, sperm and testis.

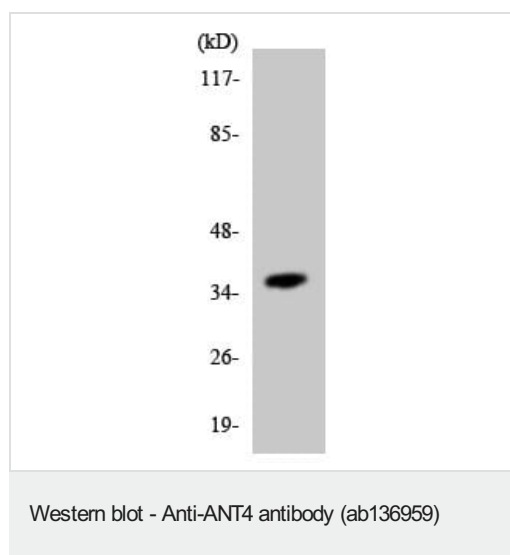
Sequence similarities

Belongs to the mitochondrial carrier family.
Contains 3 Solcar repeats.

Cellular localization

Mitochondrion inner membrane. Cell projection > cilium > flagellum. In sperm flagellum this protein is located in the fibrous sheath, a non-mitochondrial region.

Images



Anti-ANT4 antibody (ab136959) at 1/500 dilution + K562 cell lysate at 30 µg

Predicted band size: 35 kDa

Please note: All products are "FOR RESEARCH USE ONLY. NOT FOR USE IN DIAGNOSTIC PROCEDURES"

Our Abpromise to you: Quality guaranteed and expert technical support

- Replacement or refund for products not performing as stated on the datasheet
- Valid for 12 months from date of delivery

- Response to your inquiry within 24 hours
- We provide support in Chinese, English, French, German, Japanese and Spanish
- Extensive multi-media technical resources to help you
- We investigate all quality concerns to ensure our products perform to the highest standards

If the product does not perform as described on this datasheet, we will offer a refund or replacement. For full details of the Abpromise, please visit <https://www.abcam.com/abpromise> or contact our technical team.

Terms and conditions

- Guarantee only valid for products bought direct from Abcam or one of our authorized distributors