

Product datasheet

Anti-Anterior Gradient 2 antibody [EPR3278] α b76473

Recombinant RabMAb

★★★★★ **2 Abreviews** **17 References** [7 Images](#)

Overview

Product name	Anti-Anterior Gradient 2 antibody [EPR3278]
Description	Rabbit monoclonal [EPR3278] to Anterior Gradient 2
Host species	Rabbit
Tested applications	Suitable for: WB, IP, IHC-P, Flow Cyt (Intra), ICC/IF
Species reactivity	Reacts with: Human
Immunogen	Synthetic peptide within Human Anterior Gradient 2 aa 1-100. The exact sequence is proprietary.
Positive control	HT-29 and MCF-7 cell lysates. Human colon tissue. Human endometrium adenocarcinoma. ICC/IF: MCF7 cells Flow Cyt (intra): HT-29 cells IP: HT-29 whole cell lysate.
General notes	<p>This product is a recombinant monoclonal antibody, which offers several advantages including:</p> <ul style="list-style-type: none"> - High batch-to-batch consistency and reproducibility - Improved sensitivity and specificity - Long-term security of supply - Animal-free production <p>For more information see here.</p> <p>Our RabMAb[®] technology is a patented hybridoma-based technology for making rabbit monoclonal antibodies. For details on our patents, please refer to RabMAb[®] patents.</p> <p>Mouse, Rat: We have preliminary internal testing data to indicate this antibody may not react with these species. Please contact us for more information.</p>

Properties

Form	Liquid
Storage instructions	Shipped at 4°C. Store at +4°C short term (1-2 weeks). Upon delivery aliquot. Store at -20°C. Avoid freeze / thaw cycle.
Storage buffer	<p>pH: 7.20</p> <p>Preservative: 0.05% Sodium azide</p> <p>Constituents: 0.1% BSA, 40% Glycerol (glycerin, glycerine), 9.85% Tris glycine, 50% Tissue culture supernatant</p>
Purity	Protein A purified

Clonality	Monoclonal
Clone number	EPR3278
Isotype	IgG

Applications

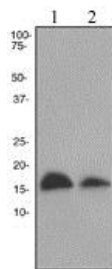
The Abpromise guarantee Our **Abpromise guarantee** covers the use of ab76473 in the following tested applications. The application notes include recommended starting dilutions; optimal dilutions/concentrations should be determined by the end user.

Application	Abreviews	Notes
WB		1/5000 - 1/10000. Predicted molecular weight: 20 kDa.
IP		1/20.
IHC-P	★★★★★ (1)	1/250 - 1/500. Perform heat mediated antigen retrieval before commencing with IHC staining protocol.
Flow Cyt (Intra)		1/40. ab172730 - Rabbit monoclonal IgG, is suitable for use as an isotype control with this antibody.
ICC/IF		1/100.

Target

Function	Required for MUC2 post-transcriptional synthesis and secretion. May play a role in the production of mucus by intestinal cells (By similarity). Proto-oncogene that may play a role in cell migration, cell differentiation and cell growth.
Tissue specificity	Expressed strongly in trachea, lung, stomach, colon, prostate and small intestine. Expressed weakly in pituitary gland, salivary gland, mammary gland, bladder, appendix, ovary, fetal lung, uterus, pancreas, kidney, fetal kidney, testis, placenta, thyroid gland and in estrogen receptor (ER)-positive breast cancer cell lines.
Sequence similarities	Belongs to the AGR family.
Cellular localization	Secreted. Endoplasmic reticulum.

Images



Western blot - Anti-Anterior Gradient 2 antibody [EPR3278] (ab76473)

All lanes : Anti-Anterior Gradient 2 antibody [EPR3278] (ab76473) at 1/10000 dilution

Lane 1 : HT-29 cell lysates

Lane 2 : MCF-7 cell lysates

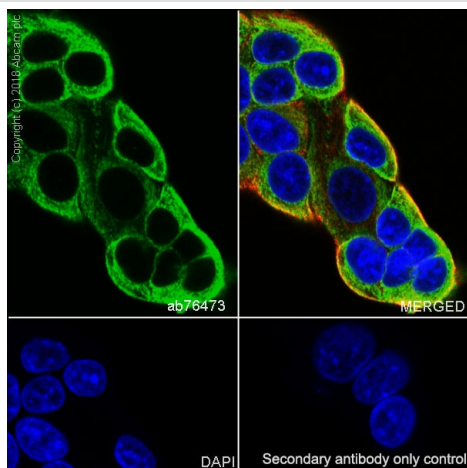
Lysates/proteins at 10 µg per lane.

Secondary

All lanes : HRP labelled goat anti-rabbit at 1/2000 dilution

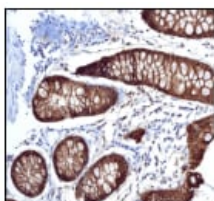
Predicted band size: 20 kDa

Observed band size: 17 kDa



Immunocytochemistry/ Immunofluorescence - Anti-Anterior Gradient 2 antibody [EPR3278] (ab76473)

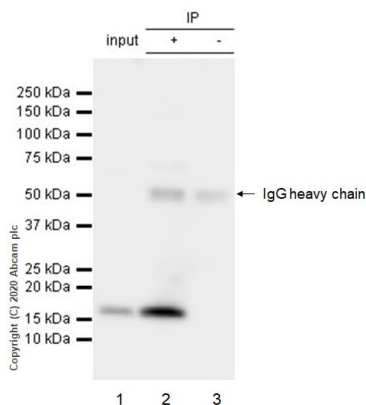
Immunocytochemistry/ Immunofluorescence analysis of MCF7 (human breast adenocarcinoma epithelial cell) cells labeling Anterior Gradient 2 with purified ab76473 at 1/100 dilution (3.5 µg/mL). Cells were fixed in 100% Methanol. Cells were counterstained with **ab195889** Anti-alpha Tubulin antibody [DM1A] - Microtubule Marker (Alexa Fluor® 594) 1/200 (2.5 µg/mL). Goat anti rabbit IgG (Alexa Fluor® 488, **ab150077**) was used as the secondary antibody at 1/1000 (2 µg/mL) dilution. DAPI (blue) was used as nuclear counterstain. **ab195889** Anti-alpha Tubulin antibody [DM1A] - Microtubule Marker (Alexa Fluor® 594) 1/200 (2.5 µg/mL) was used as the secondary antibody only control.



Immunohistochemistry (Formalin/PFA-fixed paraffin-embedded sections) - Anti-Anterior Gradient 2 antibody [EPR3278] (ab76473)

ab76473, at 1/500 dilution, staining Anterior Gradient 2 in paraffin-embedded human colon tissue by Immunohistochemistry.

Perform heat mediated antigen retrieval before commencing with IHC staining protocol.



Immunoprecipitation - Anti-Anterior Gradient 2 antibody [EPR3278] (ab76473)

Purified ab76473 at 1/20 dilution (2µg) immunoprecipitating

Anterior Gradient 2 in HT-29 whole cell lysate.

Lane 1 (input): HT-29 (Human colorectal adenocarcinoma epithelial cell) whole cell lysate 10µg

Lane 2 (+): ab76473 + HT-29 whole cell lysate.

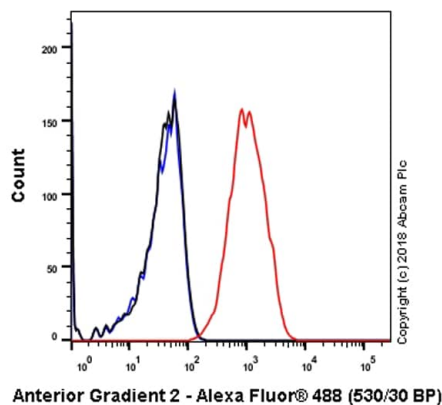
Lane 3 (-): Rabbit monoclonal IgG ([ab172730](#)) instead of ab76473 in HT-29 whole cell lysate.

VeriBlot for IP Detection Reagent (HRP) ([ab131366](#)) (1/1000 dilution) was used for Western blotting.

Blocking Buffer and concentration: 5% NFDm/TBST.

Diluting buffer and concentration: 5% NFDm/TBST.

Observed band size: 17 kDa



Flow Cytometry (Intracellular) - Anti-Anterior Gradient 2 antibody [EPR3278] (ab76473)

Intracellular Flow Cytometry analysis of HT-29 (Human colorectal

adenocarcinoma epithelial cell) cells labeling Anterior Gradient 2

with purified ab76473 at 1/40 dilution (10 µg/mL) (Red). Cells were

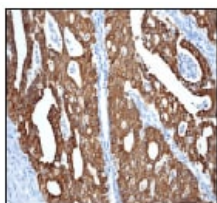
fixed with 4% Paraformaldehyde and permeabilised with 90%

Methanol. A Goat anti rabbit IgG (Alexa Fluor® 488, [ab150077](#))

secondary antibody was used at 1/2000. Isotype control - Rabbit

monoclonal IgG (Black). Unlabeled control - Cells without incubation

with primary antibody and secondary antibody (Blue).



Immunohistochemistry (Formalin/PFA-fixed paraffin-embedded sections) - Anti-Anterior Gradient 2 antibody [EPR3278] (ab76473)

ab76473, at 1/500 dilution, staining Anterior Gradient 2 in paraffin-

embedded human endometrium adenocarcinoma by

Immunohistochemistry.

Perform heat mediated antigen retrieval before commencing with

IHC staining protocol.

Why choose a recombinant antibody?



Research with confidence
Consistent and reproducible results



Long-term and scalable supply
Recombinant technology



Success from the first experiment
Confirmed specificity



Ethical standards compliant
Animal-free production

Anti-Anterior Gradient 2 antibody [EPR3278]
(ab76473)

Please note: All products are "FOR RESEARCH USE ONLY. NOT FOR USE IN DIAGNOSTIC PROCEDURES"

Our Abpromise to you: Quality guaranteed and expert technical support

- Replacement or refund for products not performing as stated on the datasheet
- Valid for 12 months from date of delivery
- Response to your inquiry within 24 hours
- We provide support in Chinese, English, French, German, Japanese and Spanish
- Extensive multi-media technical resources to help you
- We investigate all quality concerns to ensure our products perform to the highest standards

If the product does not perform as described on this datasheet, we will offer a refund or replacement. For full details of the Abpromise, please visit <https://www.abcam.com/abpromise> or contact our technical team.

Terms and conditions

- Guarantee only valid for products bought direct from Abcam or one of our authorized distributors