

## Product datasheet

# Anti-AP-A antibody [EPR9411(2)] ab155991

Recombinant RabMAb

★★★★☆ [3 Abreviews](#) [1 References](#) [8 Images](#)

### Overview

<b>Product name</b>	Anti-AP-A antibody [EPR9411(2)]
<b>Description</b>	Rabbit monoclonal [EPR9411(2)] to AP-A
<b>Host species</b>	Rabbit
<b>Tested applications</b>	<b>Suitable for:</b> WB, IHC-P <b>Unsuitable for:</b> Flow Cyt, ICC/IF or IP
<b>Species reactivity</b>	<b>Reacts with:</b> Human
<b>Immunogen</b>	Synthetic peptide within Human AP-A. The exact sequence is proprietary.
<b>Positive control</b>	Human fetal lung and fetal kidney lysates; Human kidney and placenta tissue.
<b>General notes</b>	<p>This product is a recombinant monoclonal antibody, which offers several advantages including:</p> <ul style="list-style-type: none"><li>- High batch-to-batch consistency and reproducibility</li><li>- Improved sensitivity and specificity</li><li>- Long-term security of supply</li><li>- Animal-free production</li></ul> <p>For more information <a href="#">see here</a>.</p> <p>Our RabMAb<sup>®</sup> technology is a patented hybridoma-based technology for making rabbit monoclonal antibodies. For details on our patents, please refer to <a href="#">RabMAb<sup>®</sup> patents</a>.</p> <p>Mouse, Rat: We have preliminary internal testing data to indicate this antibody may not react with these species. Please contact us for more information.</p>

### Properties

<b>Form</b>	Liquid
<b>Storage instructions</b>	Shipped at 4°C. Store at -20°C.
<b>Storage buffer</b>	pH: 7.2 Preservative: 0.01% Sodium azide Constituents: 9% PBS, 40% Glycerol (glycerin, glycerine), 0.05% BSA, 50% Tissue culture supernatant
<b>Purity</b>	Protein A purified
<b>Clonality</b>	Monoclonal

**Clone number**                      EPR9411(2)  
**Isotype**                                IgG

## Applications

**The Abpromise guarantee**        Our **Abpromise guarantee** covers the use of ab155991 in the following tested applications. The application notes include recommended starting dilutions; optimal dilutions/concentrations should be determined by the end user.

Application	Abreviews	Notes
WB		1/1000 - 1/10000. Predicted molecular weight: 109 kDa.
IHC-P	★ ★ ★ ★ ★ (2)	1/100 - 1/250. Perform heat mediated antigen retrieval before commencing with IHC staining protocol.

**Application notes**                      Is unsuitable for Flow Cyt, ICC/IF or IP.

## Target

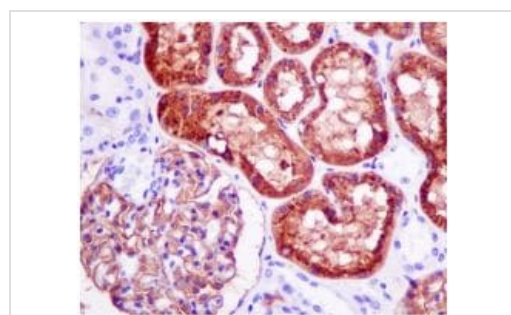
**Function**                                Appears to have a role in the catabolic pathway of the renin-angiotensin system. Probably plays a role in regulating growth and differentiation of early B-lineage cells.

**Tissue specificity**                    Expressed by epithelial cells of the proximal tubule cells and the glomerulus of the nephron. Also found in a variety of other tissues.

**Sequence similarities**                Belongs to the peptidase M1 family.

**Cellular localization**                Membrane.

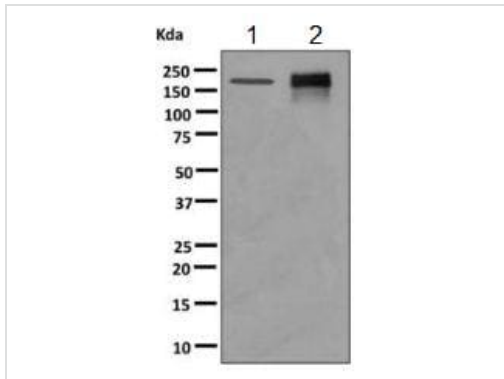
## Images



Immunohistochemical analysis of paraffin-embedded Human kidney tissue labeling AP-A with ab155991 at 1/100 dilution.

Perform heat mediated antigen retrieval before commencing with IHC staining protocol.

Immunohistochemistry (Formalin/PFA-fixed paraffin-embedded sections) - Anti-AP-A antibody [EPR9411(2)] (ab155991)



Western blot - Anti-AP-A antibody [EPR9411(2)] (ab155991)

**All lanes :** Anti-AP-A antibody [EPR9411(2)] (ab155991) at 1/1000 dilution

**Lane 1 :** Human fetal lung lysate

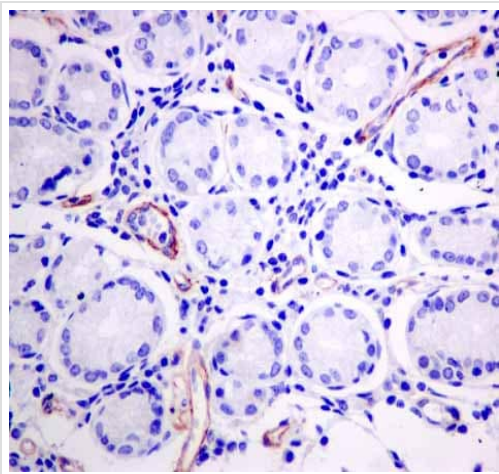
**Lane 2 :** Human fetal kidney lysates

Lysates/proteins at 10 µg per lane.

**Secondary**

**All lanes :** Goat anti-rabbit HRP at 1/2000 dilution

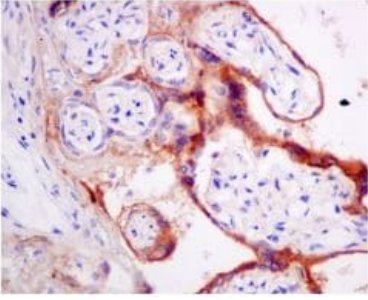
**Predicted band size:** 109 kDa



Immunohistochemistry (Formalin/PFA-fixed paraffin-embedded sections) - Anti-AP-A antibody [EPR9411(2)] (ab155991)

ab155991 showing +ve staining in Human vascular endothelium.

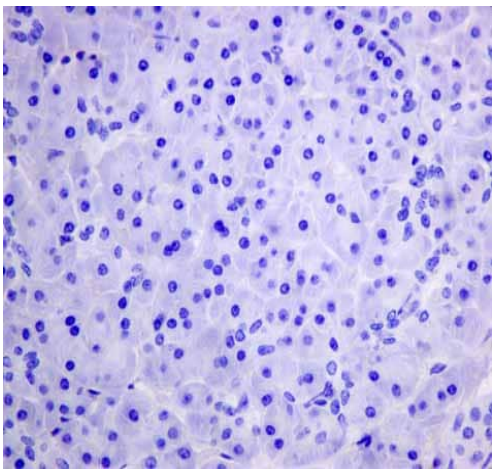
Perform heat mediated antigen retrieval before commencing with IHC staining protocol.



Immunohistochemistry (Formalin/PFA-fixed paraffin-embedded sections) - Anti-AP-A antibody  
[EPR9411(2)] (ab155991)

Immunohistochemical analysis of paraffin-embedded Human placenta tissue labeling AP-A with ab155991 at 1/100 dilution.

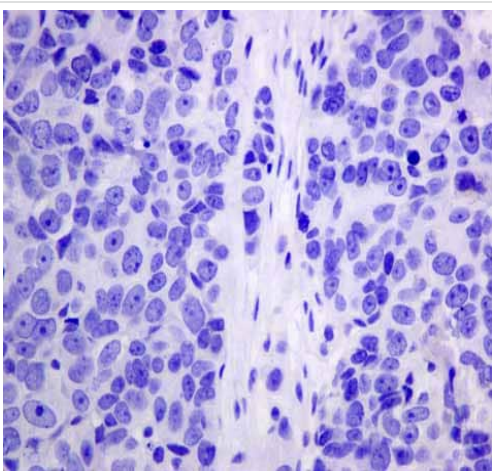
Perform heat mediated antigen retrieval before commencing with IHC staining protocol.



Immunohistochemistry (Formalin/PFA-fixed paraffin-embedded sections) - Anti-AP-A antibody  
[EPR9411(2)] (ab155991)

ab155991 showing -ve staining in Human normal prostate.

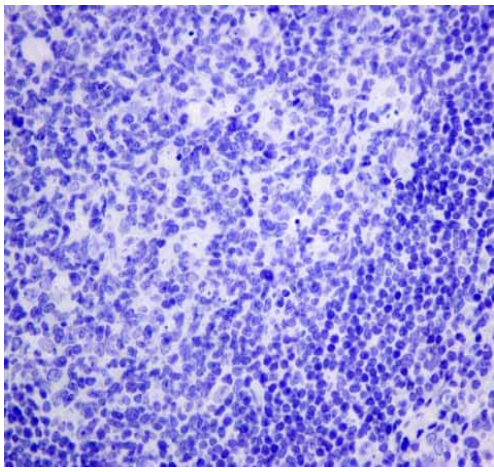
Perform heat mediated antigen retrieval before commencing with IHC staining protocol.



Immunohistochemistry (Formalin/PFA-fixed paraffin-embedded sections) - Anti-AP-A antibody  
[EPR9411(2)] (ab155991)

ab155991 showing -ve staining in Human ovarian carcinoma.

Perform heat mediated antigen retrieval before commencing with IHC staining protocol.



Immunohistochemistry (Formalin/PFA-fixed paraffin-embedded sections) - Anti-AP-A antibody [EPR9411(2)] (ab155991)

ab155991 showing -ve staining in Human normal tonsil.

Perform heat mediated antigen retrieval before commencing with IHC staining protocol.

### Why choose a recombinant antibody?



Anti-AP-A antibody [EPR9411(2)] (ab155991)

**Please note:** All products are "FOR RESEARCH USE ONLY. NOT FOR USE IN DIAGNOSTIC PROCEDURES"

### Our Abpromise to you: Quality guaranteed and expert technical support

- Replacement or refund for products not performing as stated on the datasheet
- Valid for 12 months from date of delivery
- Response to your inquiry within 24 hours
- We provide support in Chinese, English, French, German, Japanese and Spanish
- Extensive multi-media technical resources to help you
- We investigate all quality concerns to ensure our products perform to the highest standards

If the product does not perform as described on this datasheet, we will offer a refund or replacement. For full details of the Abpromise, please visit <https://www.abcam.com/abpromise> or contact our technical team.

## Terms and conditions

---

- Guarantee only valid for products bought direct from Abcam or one of our authorized distributors