



## Product datasheet

### Anti-AP1S3 antibody ab205509

2 Images

#### Overview

<b>Product name</b>	Anti-AP1S3 antibody
<b>Description</b>	Rabbit polyclonal to AP1S3
<b>Host species</b>	Rabbit
<b>Tested applications</b>	<b>Suitable for:</b> IHC-P
<b>Species reactivity</b>	<b>Reacts with:</b> Human
<b>Immunogen</b>	Recombinant full length protein corresponding to Human AP1S3 aa 1 to the C-terminus. Database link: <a href="#">Q96PC3</a>
	<div>  <a href="#">Run BLAST with</a> </div> <div>  <a href="#">Run BLAST with</a> </div>
<b>Positive control</b>	Human small intestine tissue; Human adrenal tissue
<b>General notes</b>	<p>The Life Science industry has been in the grips of a reproducibility crisis for a number of years. Abcam is leading the way in addressing this with our range of recombinant monoclonal antibodies and knockout edited cell lines for gold-standard validation. Please check that this product meets your needs before purchasing.</p> <p>If you have any questions, special requirements or concerns, please send us an inquiry and/or contact our Support team ahead of purchase. Recommended alternatives for this product can be found below, along with publications, customer reviews and Q&amp;As</p>

#### Properties

<b>Form</b>	Liquid
<b>Storage instructions</b>	Shipped at 4°C. Store at +4°C short term (1-2 weeks). Upon delivery aliquot. Store at -20°C long term. Avoid freeze / thaw cycle.
<b>Storage buffer</b>	pH: 7.40 Preservative: 0.03% Proclin 300 Constituents: 50% Glycerol (glycerin, glycerine), 49% PBS
<b>Purity</b>	Caprylic Acid - Ammonium Sulfate precipitation
<b>Clonality</b>	Polyclonal
<b>Isotype</b>	IgG

#### Applications

## The Abpromise guarantee

Our **Abpromise guarantee** covers the use of ab205509 in the following tested applications.

The application notes include recommended starting dilutions; optimal dilutions/concentrations should be determined by the end user.

Application	Abreviews	Notes
IHC-P		Use a concentration of 10 µg/ml.

## Target

### Function

Subunit of clathrin-associated adaptor protein complex 1 that plays a role in protein sorting in the late-Golgi/trans-Golgi network (TGN) and/or endosomes. The AP complexes mediate both the recruitment of clathrin to membranes and the recognition of sorting signals within the cytosolic tails of transmembrane cargo molecules.

### Tissue specificity

Widely expressed.

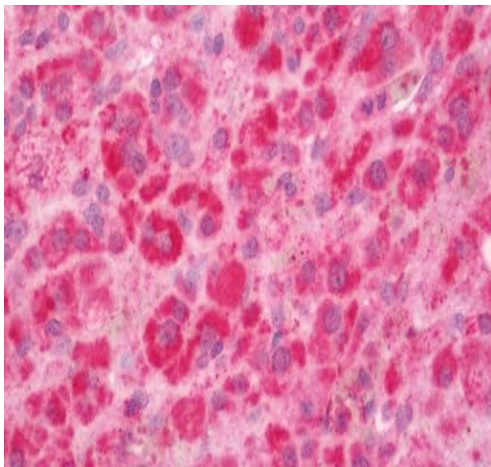
### Sequence similarities

Belongs to the adaptor complexes small subunit family.

### Cellular localization

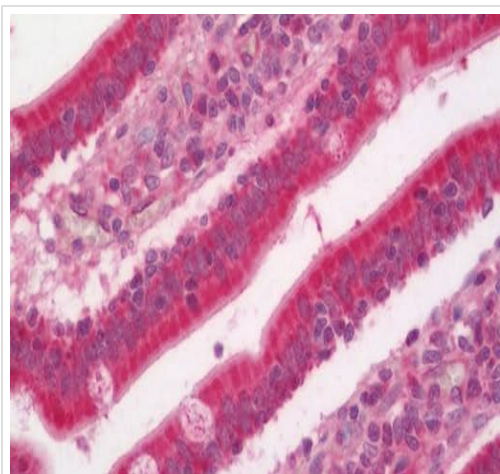
Golgi apparatus. Cytoplasmic vesicle membrane. Membrane > clathrin-coated pit. Component of the coat surrounding the cytoplasmic face of coated vesicles located at the Golgi complex.

## Images



Immunohistochemical analysis of formalin-fixed, paraffin-embedded Human adrenal tissue labeling AP1S3 with ab205509 at 10µg/mL.

Immunohistochemistry (Formalin/PFA-fixed paraffin-embedded sections) - Anti-AP1S3 antibody (ab205509)



Immunohistochemical analysis of formalin-fixed, paraffin-embedded Human small intestine tissue labeling AP1S3 with ab205509 at 10µg/mL.

Immunohistochemistry (Formalin/PFA-fixed paraffin-embedded sections) - Anti-AP1S3 antibody (ab205509)

**Please note:** All products are "FOR RESEARCH USE ONLY. NOT FOR USE IN DIAGNOSTIC PROCEDURES"

### Our Abpromise to you: Quality guaranteed and expert technical support

---

- Replacement or refund for products not performing as stated on the datasheet
- Valid for 12 months from date of delivery
- Response to your inquiry within 24 hours
- We provide support in Chinese, English, French, German, Japanese and Spanish
- Extensive multi-media technical resources to help you
- We investigate all quality concerns to ensure our products perform to the highest standards

If the product does not perform as described on this datasheet, we will offer a refund or replacement. For full details of the Abpromise, please visit <https://www.abcam.com/abpromise> or contact our technical team.

### Terms and conditions

---

- Guarantee only valid for products bought direct from Abcam or one of our authorized distributors