




Product datasheet

Anti-AP4B1 antibody ab235539

3 Images

Overview

Product name	Anti-AP4B1 antibody
Description	Rabbit polyclonal to AP4B1
Host species	Rabbit
Tested applications	Suitable for: WB, IHC-P
Species reactivity	Reacts with: Human Predicted to work with: Mouse 
Immunogen	Recombinant fragment corresponding to Human AP4B1 aa 200-500. Database link: Q9Y6B7-1  Run BLAST with  Run BLAST with
Positive control	WB: HepG2, U-251 MG and L02 whole cell lysate. IHC-P: Human testis and adrenal gland tissue.
General notes	<p>The Life Science industry has been in the grips of a reproducibility crisis for a number of years. Abcam is leading the way in addressing this with our range of recombinant monoclonal antibodies and knockout edited cell lines for gold-standard validation. Please check that this product meets your needs before purchasing.</p> <p>If you have any questions, special requirements or concerns, please send us an inquiry and/or contact our Support team ahead of purchase. Recommended alternatives for this product can be found below, along with publications, customer reviews and Q&As</p>

Properties

Form	Liquid
Storage instructions	Shipped at 4°C. Store at +4°C short term (1-2 weeks). Upon delivery aliquot. Store at -20°C long term. Avoid freeze / thaw cycle.
Storage buffer	pH: 7.40 Preservative: 0.03% Proclin 300 Constituents: 50% Glycerol (glycerin, glycerine), PBS
Purity	Protein G purified
Purification notes	Purity >95%.
Clonality	Polyclonal
Isotype	IgG

Applications

The Abpromise guarantee

Our **Abpromise guarantee** covers the use of ab235539 in the following tested applications.

The application notes include recommended starting dilutions; optimal dilutions/concentrations should be determined by the end user.

Application	Abreviews	Notes
WB		1/500 - 1/2000.
IHC-P		1/20 - 1/200.

Target

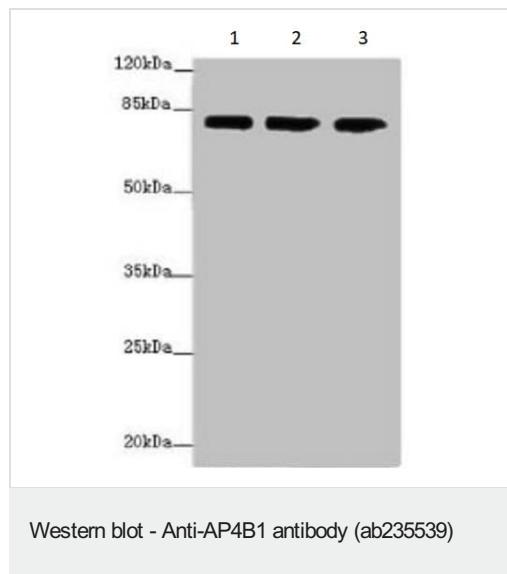
Relevance

Subunit of novel type of clathrin- or non-clathrin-associated protein coat involved in targeting proteins from the trans-Golgi network (TGN) to the endosomal-lysosomal system.

Cellular localization

Golgi apparatus, trans-Golgi network.

Images



All lanes : Anti-AP4B1 antibody (ab235539) at 1/500 dilution

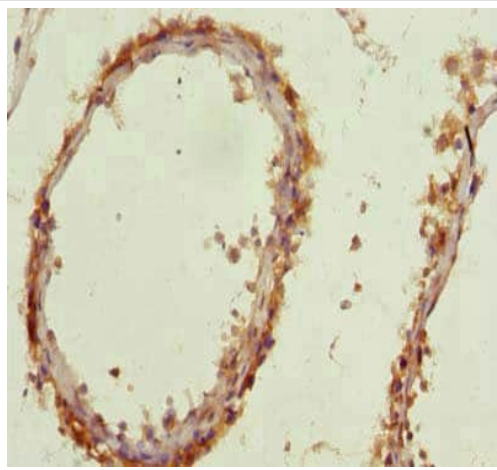
Lane 1 : HepG2 (Human liver hepatocellular carcinoma cell line) whole cell lysate

Lane 2 : U-251 MG (Human brain glioma cell line) whole cell lysate

Lane 3 : L02 (Human immortal liver cell line) whole cell lysate

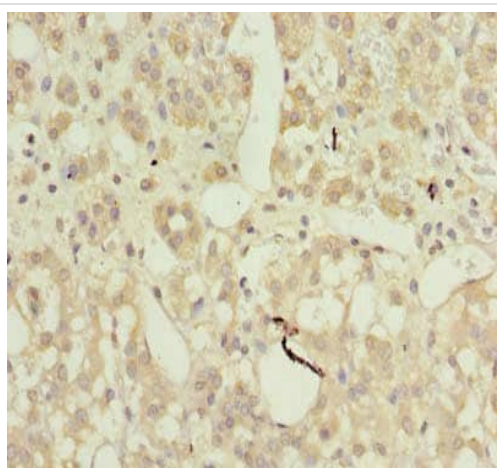
Secondary

All lanes : Goat polyclonal to Rabbit IgG at 1/10000 dilution



Paraffin-embedded human testis tissue stained for AP4B1 with ab235539 at 1/100 dilution in immunohistochemical analysis.

Immunohistochemistry (Formalin/PFA-fixed paraffin-embedded sections) - Anti-AP4B1 antibody (ab235539)



Paraffin-embedded human adrenal gland tissue stained for AP4B1 with ab235539 at 1/100 dilution in immunohistochemical analysis.

Immunohistochemistry (Formalin/PFA-fixed paraffin-embedded sections) - Anti-AP4B1 antibody (ab235539)

Please note: All products are "FOR RESEARCH USE ONLY. NOT FOR USE IN DIAGNOSTIC PROCEDURES"

Our Abpromise to you: Quality guaranteed and expert technical support

- Replacement or refund for products not performing as stated on the datasheet
- Valid for 12 months from date of delivery
- Response to your inquiry within 24 hours

- We provide support in Chinese, English, French, German, Japanese and Spanish
- Extensive multi-media technical resources to help you
- We investigate all quality concerns to ensure our products perform to the highest standards

If the product does not perform as described on this datasheet, we will offer a refund or replacement. For full details of the Abpromise,

please visit <https://www.abcam.com/abpromise> or contact our technical team.

Terms and conditions

- Guarantee only valid for products bought direct from Abcam or one of our authorized distributors