

## Product datasheet

# APC Anti-CCR3 antibody [5E8-G9-B4], prediluted ab155356

[1 Image](#)

### Overview

<b>Product name</b>	APC Anti-CCR3 antibody [5E8-G9-B4], prediluted
<b>Description</b>	APC Mouse monoclonal [5E8-G9-B4] to CCR3, prediluted
<b>Host species</b>	Mouse
<b>Conjugation</b>	APC. Ex: 645nm, Em: 660nm
<b>Tested applications</b>	<b>Suitable for:</b> Flow Cyt
<b>Species reactivity</b>	<b>Reacts with:</b> Human
<b>Immunogen</b>	Tissue, cells or virus. This information is proprietary to Abcam and/or its suppliers.
<b>Positive control</b>	Normal Human peripheral blood cells.
<b>General notes</b>	<p>The Life Science industry has been in the grips of a reproducibility crisis for a number of years. Abcam is leading the way in addressing this with our range of recombinant monoclonal antibodies and knockout edited cell lines for gold-standard validation. Please check that this product meets your needs before purchasing.</p> <p>If you have any questions, special requirements or concerns, please send us an inquiry and/or contact our Support team ahead of purchase. Recommended alternatives for this product can be found below, along with publications, customer reviews and Q&amp;As</p>

### Properties

<b>Form</b>	Liquid
<b>Storage instructions</b>	Shipped at 4°C. Store at +4°C.
<b>Storage buffer</b>	<p>pH: 7.20</p> <p>Preservative: 0.09% Sodium azide</p> <p>Constituent: 0.2% BSA</p>
<b>Purity</b>	<p>Contain 1xPBS</p> <p>Protein G purified</p>
<b>Clonality</b>	Monoclonal
<b>Clone number</b>	5E8-G9-B4
<b>Isotype</b>	IgG2b

Light chain type

kappa

## Applications

### The Abpromise guarantee

Our **Abpromise guarantee** covers the use of ab155356 in the following tested applications.

The application notes include recommended starting dilutions; optimal dilutions/concentrations should be determined by the end user.

Application	Abreviews	Notes
Flow Cyt		Use 5µl for 10 <sup>6</sup> cells. <b>ab91534</b> - Mouse monoclonal IgG2b, is suitable for use as an isotype control with this antibody.

## Target

### Function

Receptor for a C-C type chemokine. Binds to eotaxin, eotaxin-3, MCP-3, MCP-4, RANTES and MIP-1 delta. Subsequently transduces a signal by increasing the intracellular calcium ions level. Alternative coreceptor with CD4 for HIV-1 infection.

### Tissue specificity

In eosinophils as well as trace amounts in neutrophils and monocytes.

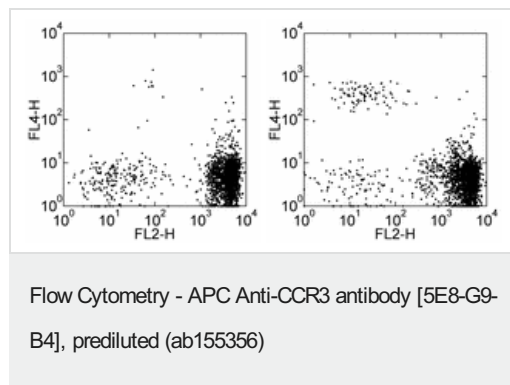
### Sequence similarities

Belongs to the G-protein coupled receptor 1 family.

### Cellular localization

Cell membrane.

## Images



Flow cytometric analysis of normal Human peripheral blood cells labeling CCR3 with Anti-Human CD16 PE and mouse IgG2b kappa Isotype Control APC (left) or 5 µl (0.25 µg) of ab155356 (right). Cells in the large scatter population were used for analysis.

**Please note:** All products are "FOR RESEARCH USE ONLY. NOT FOR USE IN DIAGNOSTIC PROCEDURES"

## Our Abpromise to you: Quality guaranteed and expert technical support

- Replacement or refund for products not performing as stated on the datasheet
- Valid for 12 months from date of delivery
- Response to your inquiry within 24 hours
- We provide support in Chinese, English, French, German, Japanese and Spanish

- Extensive multi-media technical resources to help you
- We investigate all quality concerns to ensure our products perform to the highest standards

If the product does not perform as described on this datasheet, we will offer a refund or replacement. For full details of the Abpromise, please visit <https://www.abcam.com/abpromise> or contact our technical team.

#### **Terms and conditions**

---

- Guarantee only valid for products bought direct from Abcam or one of our authorized distributors