

## Product datasheet

# APC Anti-CD11b antibody [EP1345Y] ab221248

Recombinant RabMAb

2 Images

### Overview

<b>Product name</b>	APC Anti-CD11b antibody [EP1345Y]
<b>Description</b>	APC Rabbit monoclonal [EP1345Y] to CD11b
<b>Host species</b>	Rabbit
<b>Conjugation</b>	APC. Ex: 645nm, Em: 660nm
<b>Tested applications</b>	<b>Suitable for:</b> Flow Cyt (Intra)
<b>Species reactivity</b>	<b>Reacts with:</b> Human
<b>Immunogen</b>	Synthetic peptide. This information is proprietary to Abcam and/or its suppliers.
<b>Positive control</b>	Flow Cyt (Intra): human monocytes
<b>General notes</b>	<p>This product is a recombinant monoclonal antibody, which offers several advantages including:</p> <ul style="list-style-type: none"><li>- High batch-to-batch consistency and reproducibility</li><li>- Improved sensitivity and specificity</li><li>- Long-term security of supply</li><li>- Animal-free production</li></ul> <p>For more information <a href="#">see here</a>.</p> <p>Our RabMAb<sup>®</sup> technology is a patented hybridoma-based technology for making rabbit monoclonal antibodies. For details on our patents, please refer to <a href="#">RabMAb<sup>®</sup> patents</a>.</p>

### Properties

<b>Form</b>	Liquid
<b>Storage instructions</b>	Shipped at 4°C. Upon delivery aliquot. Store at +4°C. Store In the Dark.
<b>Storage buffer</b>	pH: 7.40 Preservative: 0.02% Sodium azide Constituents: PBS, 1% BSA
<b>Purity</b>	Protein A purified
<b>Clonality</b>	Monoclonal
<b>Clone number</b>	EP1345Y
<b>Isotype</b>	IgG

## Applications

---

**The Abpromise guarantee** Our **Abpromise guarantee** covers the use of ab221248 in the following tested applications.

The application notes include recommended starting dilutions; optimal dilutions/concentrations should be determined by the end user.

Application	Abreviews	Notes
Flow Cyt (Intra)		1/500. <b>The cellular localisation of this product has been verified in ICC/IF.</b>

## Target

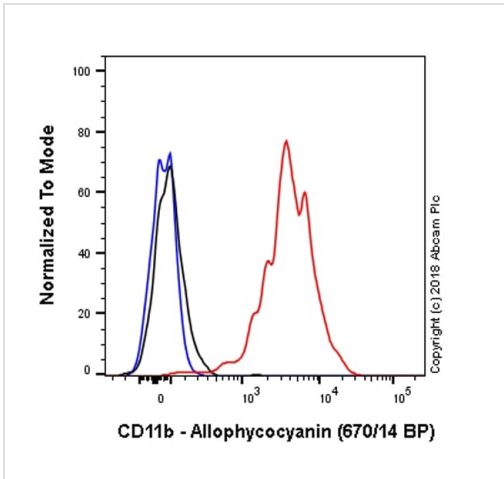
---

<b>Function</b>	Integrin alpha-M/beta-2 is implicated in various adhesive interactions of monocytes, macrophages and granulocytes as well as in mediating the uptake of complement-coated particles. It is identical with CR-3, the receptor for the iC3b fragment of the third complement component. It probably recognizes the R-G-D peptide in C3b. Integrin alpha-M/beta-2 is also a receptor for fibrinogen, factor X and ICAM1. It recognizes P1 and P2 peptides of fibrinogen gamma chain.
<b>Tissue specificity</b>	Predominantly expressed in monocytes and granulocytes.
<b>Involvement in disease</b>	Genetic variations in ITGAM has been associated with susceptibility to systemic lupus erythematosus type 6 (SLEB6) [MIM:609939]. Systemic lupus erythematosus (SLE) is a chronic, inflammatory and often febrile multisystemic disorder of connective tissue. It affects principally the skin, joints, kidneys and serosal membranes. It is thought to represent a failure of the regulatory mechanisms of the autoimmune system.
<b>Sequence similarities</b>	Belongs to the integrin alpha chain family. Contains 7 FG-GAP repeats. Contains 1 VWFA domain.
<b>Domain</b>	The integrin I-domain (insert) is a VWFA domain. Integrins with I-domains do not undergo protease cleavage.
<b>Cellular localization</b>	Membrane.

---

## Images

---



Flow Cytometry (Intracellular) - APC Anti-CD11b antibody [EP1345Y] (ab221248)

Overlay histogram showing human CD14+ monocytes stained with ab221248 (red line). Human peripheral blood mononuclear cells were incubated for 30min on ice in 1x PBS containing 10ug/ml human IgG and 10% normal goat serum to block FC receptors and non-specific protein-protein interactions. Then cells were surface stained for CD14 FITC ([ab28061](#)) for 30 min on ice. The cells were then permeabilised with 4.2% formaldehyde and 0.1% saponin for 20 min at 4°C. After cells were blocked with 1xPBS containing 0.1% saponin and 10% normal goat serum for 30 min on ice followed by the antibody (ab221248, 1x10<sup>6</sup> cells in 100ul at 1ug/ml) for 30 min on ice.

Isotype control antibody (black line) Rabbit IgG (monoclonal) Allophycocyanin ([ab232814](#)) used at the same concentration and conditions as the primary antibody. CD14 FITC single stained cells (blue line) were also used as a control.

Acquisition of >5,000 events were collected using a 40 mW Red laser (640nm) and 670/14 bandpass filter. Events were gated on live single cell CD14+ positive monocytes.

Why choose a recombinant antibody?

<p><b>Research with confidence</b> Consistent and reproducible results</p>	<p><b>Long-term and scalable supply</b> Recombinant technology</p>
<p><b>Success from the first experiment</b> Confirmed specificity</p>	<p><b>Ethical standards compliant</b> Animal-free production</p>

APC Anti-CD11b antibody [EP1345Y] (ab221248)

**Please note:** All products are "FOR RESEARCH USE ONLY. NOT FOR USE IN DIAGNOSTIC PROCEDURES"

**Our Abpromise to you: Quality guaranteed and expert technical support**

- Replacement or refund for products not performing as stated on the datasheet
- Valid for 12 months from date of delivery
- Response to your inquiry within 24 hours
- We provide support in Chinese, English, French, German, Japanese and Spanish
- Extensive multi-media technical resources to help you
- We investigate all quality concerns to ensure our products perform to the highest standards

If the product does not perform as described on this datasheet, we will offer a refund or replacement. For full details of the Abpromise, please visit <https://www.abcam.com/abpromise> or contact our technical team.

### **Terms and conditions**

---

- Guarantee only valid for products bought direct from Abcam or one of our authorized distributors