


APC Anti-CD11b antibody [ICRF44] ab218639

1 Image

Overview

| | |
|----------------------------|---|
| Product name | APC Anti-CD11b antibody [ICRF44] |
| Description | APC Mouse monoclonal [ICRF44] to CD11b |
| Host species | Mouse |
| Conjugation | APC. Ex: 645nm, Em: 660nm |
| Tested applications | Suitable for: Flow Cyt |
| Species reactivity | Reacts with: Human Predicted to work with: Pig, Chimpanzee, Baboon, Cynomolgus monkey, Rhesus monkey  |
| Immunogen | Tissue, cells or virus corresponding to CD11b. |
| Positive control | Human peripheral blood monocytes. |
| General notes | <p>The Life Science industry has been in the grips of a reproducibility crisis for a number of years. Abcam is leading the way in addressing this with our range of recombinant monoclonal antibodies and knockout edited cell lines for gold-standard validation. Please check that this product meets your needs before purchasing.</p> <p>If you have any questions, special requirements or concerns, please send us an inquiry and/or contact our Support team ahead of purchase. Recommended alternatives for this product can be found below, along with publications, customer reviews and Q&As</p> |

Properties

| | |
|-----------------------------|--|
| Form | Liquid |
| Storage instructions | Shipped at 4°C. Store at +4°C. Store In the Dark. |
| Storage buffer | pH: 7.20 Preservative: 0.09% Sodium azide Constituents: 12% Monobasic dihydrogen sodium phosphate, 0.87% Sodium chloride, 0.1% Gelatin |
| Purity | Affinity purified |
| Purification notes | Purified from tissue culture supernatant and conjugated under optimal conditions, with unreacted dye removed from the preparation. |
| Clonality | Monoclonal |

| | |
|------------------|--------|
| Clone number | ICRF44 |
| Isotype | IgG1 |
| Light chain type | kappa |

Applications

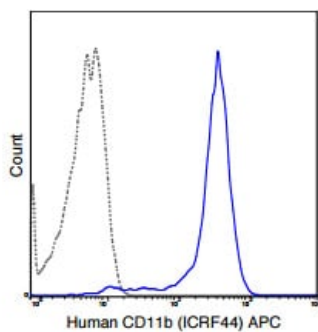
The Abpromise guarantee Our **Abpromise guarantee** covers the use of ab218639 in the following tested applications. The application notes include recommended starting dilutions; optimal dilutions/concentrations should be determined by the end user.

| Application | Abreviews | Notes |
|-------------|-----------|---|
| Flow Cyt | | Use 5µl for 10 ⁵⁻⁸ cells. in a final volume of approximately 100 uL. |

Target

| | |
|-------------------------------|---|
| Function | Integrin alpha-M/beta-2 is implicated in various adhesive interactions of monocytes, macrophages and granulocytes as well as in mediating the uptake of complement-coated particles. It is identical with CR-3, the receptor for the iC3b fragment of the third complement component. It probably recognizes the R-G-D peptide in C3b. Integrin alpha-M/beta-2 is also a receptor for fibrinogen, factor X and ICAM1. It recognizes P1 and P2 peptides of fibrinogen gamma chain. |
| Tissue specificity | Predominantly expressed in monocytes and granulocytes. |
| Involvement in disease | Genetic variations in ITGAM has been associated with susceptibility to systemic lupus erythematosus type 6 (SLEB6) [MIM:609939]. Systemic lupus erythematosus (SLE) is a chronic, inflammatory and often febrile multisystemic disorder of connective tissue. It affects principally the skin, joints, kidneys and serosal membranes. It is thought to represent a failure of the regulatory mechanisms of the autoimmune system. |
| Sequence similarities | Belongs to the integrin alpha chain family. Contains 7 FG-GAP repeats. Contains 1 VWFA domain. |
| Domain | The integrin I-domain (insert) is a VWFA domain. Integrins with I-domains do not undergo protease cleavage. |
| Cellular localization | Membrane. |

Images



Flow Cytometry - APC Anti-CD11b antibody
[ICRF44] (ab218639)

Flow cytometric analysis of Human peripheral blood monocytes labeling CD11b with ab218639 at 5 μ L (1 μ g) (solid line) or 1 μ g Allophycocyanin Mouse IgG1 isotype control (dashed line).

Please note: All products are "FOR RESEARCH USE ONLY. NOT FOR USE IN DIAGNOSTIC PROCEDURES"

Our Abpromise to you: Quality guaranteed and expert technical support

- Replacement or refund for products not performing as stated on the datasheet
- Valid for 12 months from date of delivery
- Response to your inquiry within 24 hours
- We provide support in Chinese, English, French, German, Japanese and Spanish
- Extensive multi-media technical resources to help you
- We investigate all quality concerns to ensure our products perform to the highest standards

If the product does not perform as described on this datasheet, we will offer a refund or replacement. For full details of the Abpromise, please visit <https://www.abcam.com/abpromise> or contact our technical team.

Terms and conditions

- Guarantee only valid for products bought direct from Abcam or one of our authorized distributors