

APC Anti-CD1a antibody [SK9] ab234217

[2 Images](#)

Overview

Product name	APC Anti-CD1a antibody [SK9]
Description	APC Mouse monoclonal [SK9] to CD1a
Host species	Mouse
Conjugation	APC. Ex: 645nm, Em: 660nm
Tested applications	Suitable for: Flow Cyt
Species reactivity	Reacts with: Human
Immunogen	Tissue, cells or virus corresponding to CD1a. (Human thymocytes).
General notes	<p>The Life Science industry has been in the grips of a reproducibility crisis for a number of years. Abcam is leading the way in addressing this with our range of recombinant monoclonal antibodies and knockout edited cell lines for gold-standard validation. Please check that this product meets your needs before purchasing.</p> <p>If you have any questions, special requirements or concerns, please send us an inquiry and/or contact our Support team ahead of purchase. Recommended alternatives for this product can be found below, along with publications, customer reviews and Q&As</p>

Properties

Form	Liquid
Storage instructions	Shipped at 4°C. Store at +4°C. Store In the Dark.
Storage buffer	<p>pH: 7.4</p> <p>Preservative: 0.0975% Sodium azide</p> <p>Constituent: PBS</p>
Purity	Size exclusion
Purification notes	ab234217 is conjugated with cross-linked Allophycocyanin (APC) under optimum conditions. The conjugate is purified by size-exclusion chromatography and adjusted for direct use.
Clonality	Monoclonal
Clone number	SK9
Isotype	IgG2b

Applications

Applications

The Abpromise guarantee

Our **Abpromise guarantee** covers the use of ab234217 in the following tested applications.

The application notes include recommended starting dilutions; optimal dilutions/concentrations should be determined by the end user.

Application	Abreviews	Notes
Flow Cyt		Use 10µl for 10 ⁶ cells. (or 100 µL whole blood)

Target

Function

Antigen-presenting protein that binds self and non-self lipid and glycolipid antigens and presents them to T-cell receptors on natural killer T-cells.

Tissue specificity

Expressed on cortical thymocytes, epidermal Langerhans cells, dendritic cells, on certain T-cell leukemias, and in various other tissues.

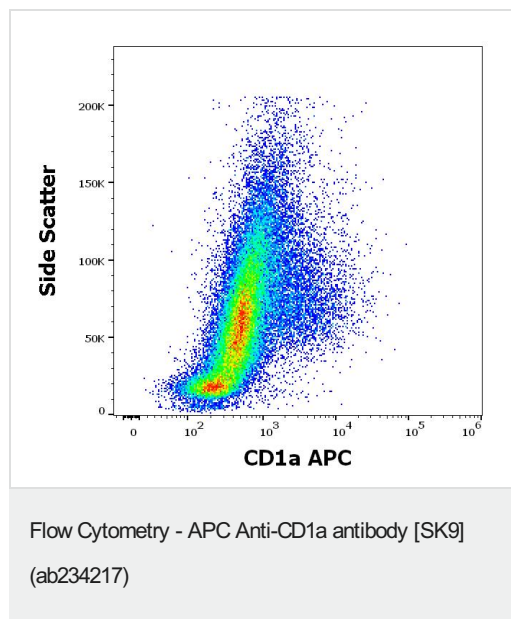
Sequence similarities

Contains 1 Ig-like (immunoglobulin-like) domain.

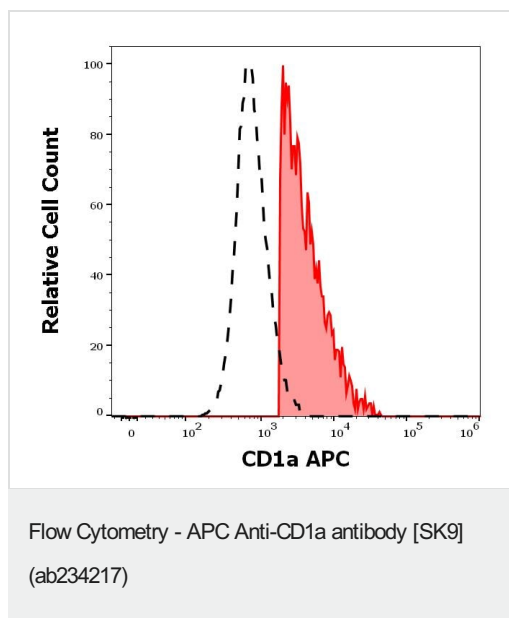
Cellular localization

Cell membrane. Endosome membrane. Subject to intracellular trafficking between the cell membrane and endosomes. Localizes to cell surface lipid rafts.

Images



Flow cytometry surface staining pattern of human GM-CSF and IL-4 stimulated peripheral blood mononuclear cells stained using ab234217 (10 µL reagent / 100 µL of peripheral whole blood).



Separation of human CD1a positive cells (red-filled) from cells stained using mouse IgG1 isotype control APC antibody (concentration in sample 5 µg/mL, same as CD11a APC concentration, black-dashed) in flow cytometry analysis (surface staining) of human GM-CSF and IL-4 stimulated peripheral blood mononuclear cells stained using ab234217 (10 µL reagent / 100 µL of peripheral whole blood).

Please note: All products are "FOR RESEARCH USE ONLY. NOT FOR USE IN DIAGNOSTIC PROCEDURES"

Our Abpromise to you: Quality guaranteed and expert technical support

- Replacement or refund for products not performing as stated on the datasheet
- Valid for 12 months from date of delivery
- Response to your inquiry within 24 hours
- We provide support in Chinese, English, French, German, Japanese and Spanish
- Extensive multi-media technical resources to help you
- We investigate all quality concerns to ensure our products perform to the highest standards

If the product does not perform as described on this datasheet, we will offer a refund or replacement. For full details of the Abpromise, please visit <https://www.abcam.com/abpromise> or contact our technical team.

Terms and conditions

- Guarantee only valid for products bought direct from Abcam or one of our authorized distributors