


Product datasheet

APC Anti-CD28 antibody [CD28.2] ab267383

1 Image

Overview

Product name	APC Anti-CD28 antibody [CD28.2]
Description	APC Mouse monoclonal [CD28.2] to CD28
Host species	Mouse
Conjugation	APC. Ex: 645nm, Em: 660nm
Tested applications	Suitable for: Flow Cyt
Species reactivity	Reacts with: Human Predicted to work with: Chimpanzee, Baboon, Cynomolgus monkey, Rhesus monkey 
Immunogen	The details of the immunogen for this antibody are not available.
Positive control	Flow cyt: Human peripheral blood lymphocytes.
General notes	<p>The Life Science industry has been in the grips of a reproducibility crisis for a number of years. Abcam is leading the way in addressing this with our range of recombinant monoclonal antibodies and knockout edited cell lines for gold-standard validation. Please check that this product meets your needs before purchasing.</p> <p>If you have any questions, special requirements or concerns, please send us an inquiry and/or contact our Support team ahead of purchase. Recommended alternatives for this product can be found below, along with publications, customer reviews and Q&As</p>

Properties

Form	Liquid
Storage instructions	Shipped at 4°C. Store at +4°C. Store In the Dark.
Storage buffer	pH: 7.20 Preservative: 0.09% Sodium azide Constituents: 0.16% Sodium phosphate, 0.87% Sodium chloride, 0.1% Gelatin
Purity	Affinity purified
Purification notes	The purified antibody was conjugated under optimal conditions, with unreacted dye removed from the preparation.
Clonality	Monoclonal
Clone number	CD28.2
Isotype	IgG1

Light chain type

kappa

Applications

The Abpromise guarantee

Our **Abpromise guarantee** covers the use of ab267383 in the following tested applications.

The application notes include recommended starting dilutions; optimal dilutions/concentrations should be determined by the end user.

Application	Abreviews	Notes
Flow Cyt		Use at an assay dependent concentration. The antibody has been diluted for use at 5 uL per test, defined as the amount of antibody that will stain a cell sample in a final volume of approximately 100 uL. The number of cells within a sample should be determined empirically, but typically ranges between 1×10^5 to 1×10^8 cells.

Target

Function

Involved in T-cell activation, the induction of cell proliferation and cytokine production and promotion of T-cell survival.

Tissue specificity

Expressed in T-cells and plasma cells, but not in less mature B-cells.

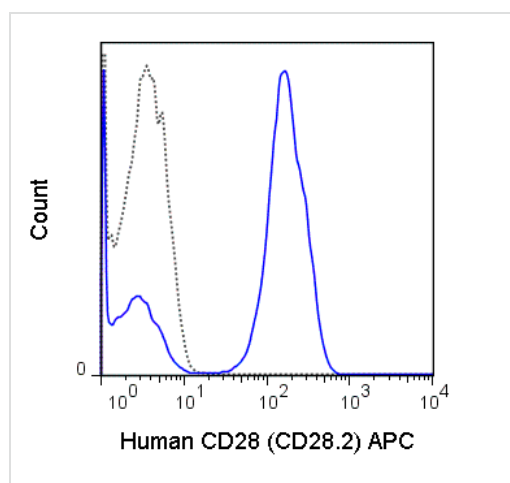
Sequence similarities

Contains 1 Ig-like V-type (immunoglobulin-like) domain.

Cellular localization

Membrane.

Images



Flow cytometric analysis of human peripheral blood lymphocytes stained for CD28 with 5 μ L (0.25 μ g) of ab267383 (blue) compared to 0.25 μ g of an APC-labeled mouse IgG1 isotype control (dashed line).

Flow Cytometry - APC Anti-CD28 antibody [CD28.2] (ab267383)

Please note: All products are "FOR RESEARCH USE ONLY. NOT FOR USE IN DIAGNOSTIC PROCEDURES"

Our Abpromise to you: Quality guaranteed and expert technical support

- Replacement or refund for products not performing as stated on the datasheet
- Valid for 12 months from date of delivery
- Response to your inquiry within 24 hours

- We provide support in Chinese, English, French, German, Japanese and Spanish
- Extensive multi-media technical resources to help you
- We investigate all quality concerns to ensure our products perform to the highest standards

If the product does not perform as described on this datasheet, we will offer a refund or replacement. For full details of the Abpromise, please visit <https://www.abcam.com/abpromise> or contact our technical team.

Terms and conditions

- Guarantee only valid for products bought direct from Abcam or one of our authorized distributors