

Product datasheet

APC Anti-CD3 epsilon antibody [C363.29B (YCD3-1)] ab25278

[1 References](#) [1 Image](#)

Overview

Product name	APC Anti-CD3 epsilon antibody [C363.29B (YCD3-1)]
Description	APC Rat monoclonal [C363.29B (YCD3-1)] to CD3 epsilon
Host species	Rat
Conjugation	APC. Ex: 645nm, Em: 660nm
Tested applications	Suitable for: Flow Cyt
Species reactivity	Reacts with: Mouse
Immunogen	Tissue, cells or virus corresponding to CD3 epsilon. IL-4 producing Th2 cell lines including D10
Epitope	ab25278 recognizes an epitope on the 25kD epsilon chain chain of the CD3/TCR complex.
General notes	<p>In the presence of Fc receptor-bearing accessory cells, soluble ab25278 can activate primed and naïve T cell in vitro.</p> <p>The Life Science industry has been in the grips of a reproducibility crisis for a number of years. Abcam is leading the way in addressing this with our range of recombinant monoclonal antibodies and knockout edited cell lines for gold-standard validation. Please check that this product meets your needs before purchasing.</p> <p>If you have any questions, special requirements or concerns, please send us an inquiry and/or contact our Support team ahead of purchase. Recommended alternatives for this product can be found below, along with publications, customer reviews and Q&As</p>

Properties

Form	Liquid
Storage instructions	Shipped at 4°C. Store at +4°C. Store In the Dark.
Storage buffer	<p>pH: 7.3</p> <p>Preservative: 0.09% Sodium azide</p> <p>Constituents: PBS, 16% Sucrose</p> <p>Stabilising agent.</p>
Purity	Affinity purified

Purification notes	Purified.
Primary antibody notes	In the presence of Fc receptor-bearing accessory cells, soluble ab25278 can activate primed and naïve T cell in vitro.
Clonality	Monoclonal
Clone number	C363.29B (YCD3-1)
Isotype	IgG2b
Light chain type	kappa

Applications

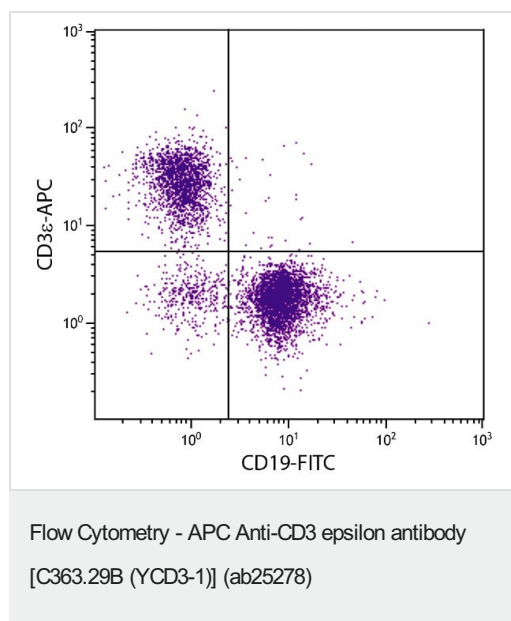
The Abpromise guarantee Our **Abpromise guarantee** covers the use of ab25278 in the following tested applications. The application notes include recommended starting dilutions; optimal dilutions/concentrations should be determined by the end user.

Application	Abreviews	Notes
Flow Cyt		Use 1 µg for 10 ⁶ cells.

Target

Function	The CD3 complex mediates signal transduction.
Sequence similarities	Contains 1 Ig-like (immunoglobulin-like) domain. Contains 1 ITAM domain.
Cellular localization	Membrane.

Images



Flow cytometric analysis of BALB/c mouse splenocytes labelling CD3 epsilon with ab25278 at 0.3 µg/10⁶ cells and labelling CD19 with a Rat Anti-Mouse CD19-FITC antibody.

Please note: All products are "FOR RESEARCH USE ONLY. NOT FOR USE IN DIAGNOSTIC PROCEDURES"

Our Abpromise to you: Quality guaranteed and expert technical support

- Replacement or refund for products not performing as stated on the datasheet
- Valid for 12 months from date of delivery
- Response to your inquiry within 24 hours
- We provide support in Chinese, English, French, German, Japanese and Spanish
- Extensive multi-media technical resources to help you
- We investigate all quality concerns to ensure our products perform to the highest standards

If the product does not perform as described on this datasheet, we will offer a refund or replacement. For full details of the Abpromise, please visit <https://www.abcam.com/abpromise> or contact our technical team.

Terms and conditions

- Guarantee only valid for products bought direct from Abcam or one of our authorized distributors