

APC Anti-CD38 antibody [90] ab25041

1 Image

Overview

Product name	APC Anti-CD38 antibody [90]
Description	APC Rat monoclonal [90] to CD38
Host species	Rat
Conjugation	APC. Ex: 645nm, Em: 660nm
Tested applications	Suitable for: Flow Cyt
Species reactivity	Reacts with: Mouse
Immunogen	Tissue, cells or virus corresponding to CD38. Mouse bone marrow pre-B cells
General notes	<p>The Life Science industry has been in the grips of a reproducibility crisis for a number of years. Abcam is leading the way in addressing this with our range of recombinant monoclonal antibodies and knockout edited cell lines for gold-standard validation. Please check that this product meets your needs before purchasing.</p> <p>If you have any questions, special requirements or concerns, please send us an inquiry and/or contact our Support team ahead of purchase. Recommended alternatives for this product can be found below, along with publications, customer reviews and Q&As</p>

Properties

Form	Liquid
Storage instructions	Shipped at 4°C. Store at +4°C. Store In the Dark.
Storage buffer	<p>pH: 7.3</p> <p>Preservative: 0.09% Sodium azide</p> <p>Constituents: PBS, 16% Sucrose</p> <p>Stabilising agent.</p>
Purity	Affinity purified
Clonality	Monoclonal
Clone number	90
Isotype	IgG2a
Light chain type	kappa

Applications

The Abpromise guarantee

Our **Abpromise guarantee** covers the use of ab25041 in the following tested applications.

The application notes include recommended starting dilutions; optimal dilutions/concentrations should be determined by the end user.

Application	Abreviews	Notes
Flow Cyt		

Application notes

Cellular activation[Induction of B lymphocyte proliferation]: Use at an assay dependent dilution.

Flow Cyt: Use 0.2µg for 10⁶ cells.

IHC-Fr: Use at an assay dependent dilution.

IP: Use at an assay dependent dilution.

Not yet tested in other applications.

Optimal dilutions/concentrations should be determined by the end user.

Target

Function

Synthesizes cyclic ADP-ribose, a second messenger for glucose-induced insulin secretion. Also has cADPr hydrolase activity. Also moonlights as a receptor in cells of the immune system.

Tissue specificity

Expressed at high levels in pancreas, liver, kidney, brain, testis, ovary, placenta, malignant lymphoma and neuroblastoma.

Sequence similarities

Belongs to the ADP-ribosyl cyclase family.

Developmental stage

Preferentially expressed at both early and late stages of the B and T-cell maturation. It is also detected on erythroid and myeloid progenitors in bone marrow, where the level of surface expression was shown to decrease during differentiation of blast-forming unit E to colony-forming unit E.

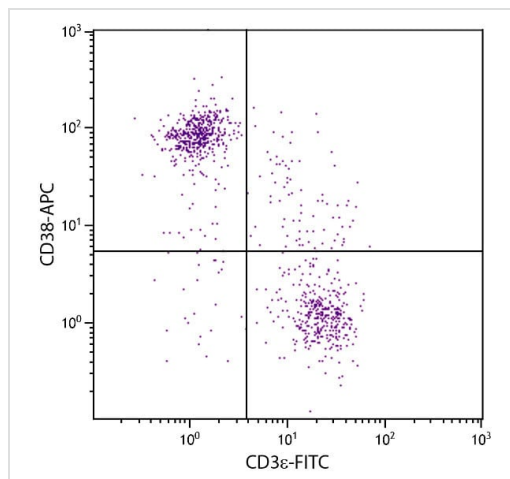
Cellular localization

Membrane.

Form

There are 2 isoforms produced by alternative splicing.

Images



Flow Cytometry - APC Anti-CD38 antibody [90]
(ab25041)

Flow Cytometry analysis of BALB/c mouse splenocytes stained with Anti-CD38 antibody [90] (Allophycocyanin) (ab25041) (0.1 $\mu\text{g}/10^6\text{cells}$) and Anti-CD3 antibody [C363.29B] (FITC) (**ab24948**).

Please note: All products are "FOR RESEARCH USE ONLY. NOT FOR USE IN DIAGNOSTIC PROCEDURES"

Our Abpromise to you: Quality guaranteed and expert technical support

- Replacement or refund for products not performing as stated on the datasheet
- Valid for 12 months from date of delivery
- Response to your inquiry within 24 hours
- We provide support in Chinese, English, French, German, Japanese and Spanish
- Extensive multi-media technical resources to help you
- We investigate all quality concerns to ensure our products perform to the highest standards

If the product does not perform as described on this datasheet, we will offer a refund or replacement. For full details of the Abpromise, please visit <https://www.abcam.com/abpromise> or contact our technical team.

Terms and conditions

- Guarantee only valid for products bought direct from Abcam or one of our authorized distributors