

APC Anti-CD38 antibody [HIT2], prediluted ab134399

[2 References](#) [2 Images](#)

Overview

| | |
|----------------------------|---|
| Product name | APC Anti-CD38 antibody [HIT2], prediluted |
| Description | APC Mouse monoclonal [HIT2] to CD38, prediluted |
| Host species | Mouse |
| Conjugation | APC. Ex: 645nm, Em: 660nm |
| Tested applications | Suitable for: Flow Cyt |
| Species reactivity | Reacts with: Human |
| Immunogen | Tissue, cells or virus corresponding to Human CD38. Human thymocytes in foetus |
| Positive control | Flow Cyt: Human blood cells. |
| General notes | <p>The Life Science industry has been in the grips of a reproducibility crisis for a number of years. Abcam is leading the way in addressing this with our range of recombinant monoclonal antibodies and knockout edited cell lines for gold-standard validation. Please check that this product meets your needs before purchasing.</p> <p>If you have any questions, special requirements or concerns, please send us an inquiry and/or contact our Support team ahead of purchase. Recommended alternatives for this product can be found below, along with publications, customer reviews and Q&As</p> |

Properties

| | |
|-----------------------------|---|
| Form | Liquid |
| Storage instructions | Shipped at 4°C. Store at +4°C. |
| Storage buffer | <p>pH: 7.40</p> <p>Preservative: 0.1% Sodium azide</p> <p>Constituents: 99% PBS, 0.2% BSA</p> |
| Purity | Size exclusion |
| Clonality | Monoclonal |
| Clone number | HIT2 |
| Isotype | IgG1 |

Applications

The Abpromise guarantee

Our **Abpromise guarantee** covers the use of ab134399 in the following tested applications.

The application notes include recommended starting dilutions; optimal dilutions/concentrations should be determined by the end user.

| Application | Abreviews | Notes |
|-------------|-----------|---|
| Flow Cyt | | Use at an assay dependent concentration. 10 µl reagent / 100 µl of whole blood or 10 ⁶ cells in a suspension. |

Target

Function

Synthesizes cyclic ADP-ribose, a second messenger for glucose-induced insulin secretion. Also has cADPr hydrolase activity. Also moonlights as a receptor in cells of the immune system.

Tissue specificity

Expressed at high levels in pancreas, liver, kidney, brain, testis, ovary, placenta, malignant lymphoma and neuroblastoma.

Sequence similarities

Belongs to the ADP-ribosyl cyclase family.

Developmental stage

Preferentially expressed at both early and late stages of the B and T-cell maturation. It is also detected on erythroid and myeloid progenitors in bone marrow, where the level of surface expression was shown to decrease during differentiation of blast-forming unit E to colony-forming unit E.

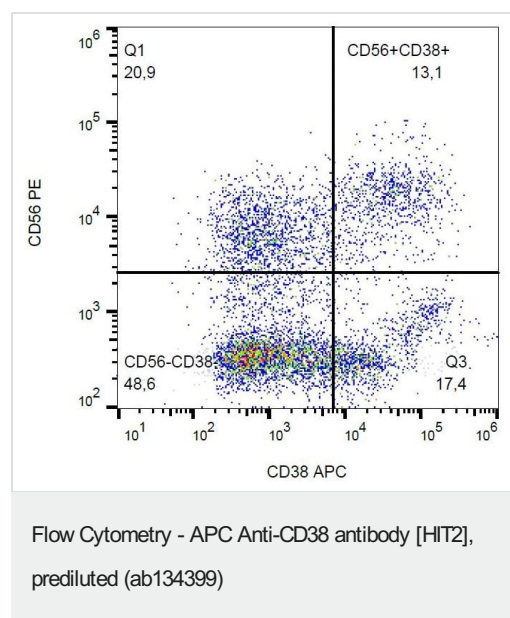
Cellular localization

Membrane.

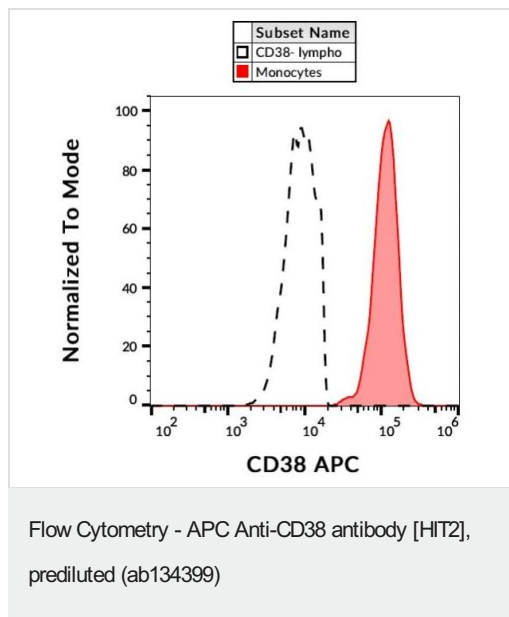
Form

There are 2 isoforms produced by alternative splicing.

Images



Flow cytometry analysis (surface staining) of human peripheral blood labeling CD38 with ab134399.



Flow cytometry analysis (surface staining) of human peripheral blood labeling CD38 with ab134399.

Please note: All products are "FOR RESEARCH USE ONLY. NOT FOR USE IN DIAGNOSTIC PROCEDURES"

Our Abpromise to you: Quality guaranteed and expert technical support

- Replacement or refund for products not performing as stated on the datasheet
- Valid for 12 months from date of delivery
- Response to your inquiry within 24 hours
- We provide support in Chinese, English, French, German, Japanese and Spanish
- Extensive multi-media technical resources to help you
- We investigate all quality concerns to ensure our products perform to the highest standards

If the product does not perform as described on this datasheet, we will offer a refund or replacement. For full details of the Abpromise, please visit <https://www.abcam.com/abpromise> or contact our technical team.

Terms and conditions

- Guarantee only valid for products bought direct from Abcam or one of our authorized distributors