

APC Anti-Eph receptor B4/HTK antibody [04] ab275685

[1 Image](#)

Overview

Product name	APC Anti-Eph receptor B4/HTK antibody [04]
Description	APC Mouse monoclonal [04] to Eph receptor B4/HTK
Host species	Mouse
Conjugation	APC. Ex: 645nm, Em: 660nm
Tested applications	Suitable for: Flow Cyt
Species reactivity	Reacts with: Human
Immunogen	Recombinant fragment (His-tag) corresponding to Human Eph receptor B4/HTK aa 1-550 (extracellular). Database link: P54760
Positive control	Flow: MCF-7 cells.
General notes	<p>The Life Science industry has been in the grips of a reproducibility crisis for a number of years. Abcam is leading the way in addressing this with our range of recombinant monoclonal antibodies and knockout edited cell lines for gold-standard validation. Please check that this product meets your needs before purchasing.</p> <p>If you have any questions, special requirements or concerns, please send us an inquiry and/or contact our Support team ahead of purchase. Recommended alternatives for this product can be found below, along with publications, customer reviews and Q&As</p>

Properties

Form	Liquid
Storage instructions	Shipped at 4°C. Store at +4°C. Do Not Freeze. Store In the Dark.
Storage buffer	Preservative: 0.03% Proclin 300 Constituent: 0.5% BSA
Purity	Protein A purified
Clonality	Monoclonal
Clone number	04
Isotype	IgG1

Applications

Applications

The Abpromise guarantee

Our **Abpromise guarantee** covers the use of ab275685 in the following tested applications.

The application notes include recommended starting dilutions; optimal dilutions/concentrations should be determined by the end user.

Application	Abreviews	Notes
Flow Cyt		Use at an assay dependent concentration. 10 µL/Test

Target

Function

Receptor for members of the ephrin-B family. Binds to ephrin-B2. May have a role in events mediating differentiation and development.

Tissue specificity

Abundantly expressed in placenta and in a range of primary tissues and malignant cell lines. Expressed in fetal, but not adult, brain, and in primitive and myeloid, but not lymphoid, hematopoietic cells.

Sequence similarities

Belongs to the protein kinase superfamily. Tyr protein kinase family. Ephrin receptor subfamily. Contains 2 fibronectin type-III domains. Contains 1 protein kinase domain. Contains 1 SAM (sterile alpha motif) domain.

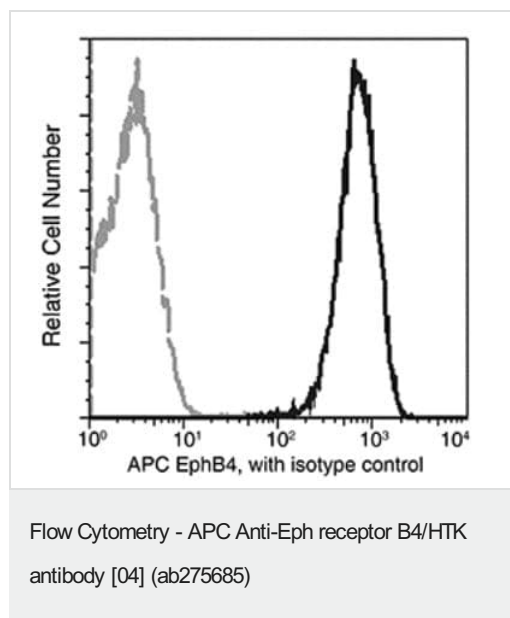
Post-translational modifications

Autophosphorylated.

Cellular localization

Membrane.

Images



Flow cytometric analysis of MCF-7 cells using ab275685, labeling Eph receptor B4/HTK.

Please note: All products are "FOR RESEARCH USE ONLY. NOT FOR USE IN DIAGNOSTIC PROCEDURES"

Our Abpromise to you: Quality guaranteed and expert technical support

- Replacement or refund for products not performing as stated on the datasheet
- Valid for 12 months from date of delivery
- Response to your inquiry within 24 hours

- We provide support in Chinese, English, French, German, Japanese and Spanish
- Extensive multi-media technical resources to help you
- We investigate all quality concerns to ensure our products perform to the highest standards

If the product does not perform as described on this datasheet, we will offer a refund or replacement. For full details of the Abpromise, please visit <https://www.abcam.com/abpromise> or contact our technical team.

Terms and conditions

- Guarantee only valid for products bought direct from Abcam or one of our authorized distributors