

Product datasheet

APC Mouse IgG2 α , monoclonal [MOPC-173] - isotype control ab239461

[1 Image](#)

Overview

| | |
|----------------------------|---|
| Product name | APC Mouse IgG2 α , monoclonal [MOPC-173] - isotype control |
| Conjugation | APC. Ex: 645nm, Em: 660nm |
| Specificity | ab239461 reacts with an unknown epitope. It does not react with a variety of resting, activated, live, and fixed mouse, rat and human tissues. |
| Tested applications | Suitable for: Flow Cyt |
| Immunogen | Chemical/ Small Molecule. The transplantable plasmacytoma MOPC-173 was induced by intraperitoneal injection of mineral oils into BALB/c mice. |
| General notes | <p>The Life Science industry has been in the grips of a reproducibility crisis for a number of years. Abcam is leading the way in addressing this with our range of recombinant monoclonal antibodies and knockout edited cell lines for gold-standard validation. Please check that this product meets your needs before purchasing.</p> <p>If you have any questions, special requirements or concerns, please send us an inquiry and/or contact our Support team ahead of purchase. Recommended alternatives for this product can be found below, along with publications, customer reviews and Q&As</p> |

Properties

| | |
|-----------------------------|---|
| Form | Liquid |
| Storage instructions | Shipped at 4°C. Store at +4°C. Store In the Dark. |
| Storage buffer | pH: 7.4 Preservative: 0.0975% Sodium azide Constituent: PBS |
| Purity | Size exclusion |
| Purification notes | Purified antibody is conjugated with cross-linked Allophycocyanin (APC) under optimum conditions. The conjugate is purified by size-exclusion chromatography. |
| Clonality | Monoclonal |
| Clone number | MOPC-173 |
| Isotype | IgG2 α |

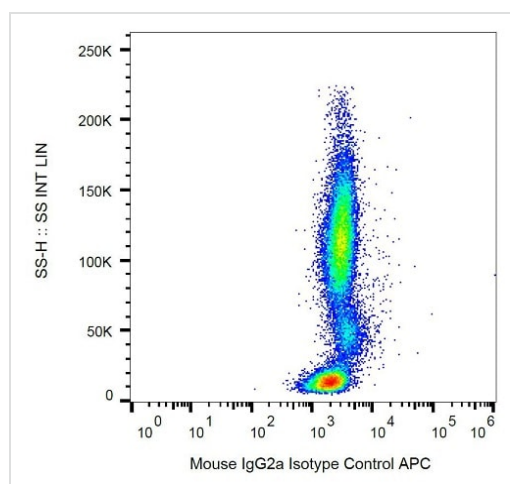
Applications

The Abpromise guarantee Our **Abpromise guarantee** covers the use of ab239461 in the following tested applications.

The application notes include recommended starting dilutions; optimal dilutions/concentrations should be determined by the end user.

| Application | Abreviews | Notes |
|-------------|-----------|--|
| Flow Cyt | | Use at an assay dependent concentration. ab239461 is intended as isotype control for flow cytometry analysis to establish the amount of non-specific antibody binding. For your particular experiment, use the same concentration of this isotype control antibody as the recommended working concentration of the antigen-specific antibody. Also, when working with prediluted antibodies, dilute the isotype control to the |

Images



Example of non-specific ab239461 signal on human peripheral blood; surface staining, 9 µg/ml.

Flow Cytometry - APC Mouse IgG2a, monoclonal
[MOPC-173] - isotype control (ab239461)

Please note: All products are "FOR RESEARCH USE ONLY. NOT FOR USE IN DIAGNOSTIC PROCEDURES"

Our Abpromise to you: Quality guaranteed and expert technical support

- Replacement or refund for products not performing as stated on the datasheet
- Valid for 12 months from date of delivery
- Response to your inquiry within 24 hours
- We provide support in Chinese, English, French, German, Japanese and Spanish
- Extensive multi-media technical resources to help you
- We investigate all quality concerns to ensure our products perform to the highest standards

If the product does not perform as described on this datasheet, we will offer a refund or replacement. For full details of the Abpromise, please visit <https://www.abcam.com/abpromise> or contact our technical team.

Terms and conditions

- Guarantee only valid for products bought direct from Abcam or one of our authorized distributors