

APC Anti-P Glycoprotein antibody [UIC2] ab272340

[2 Images](#)

Overview

Product name	APC Anti-P Glycoprotein antibody [UIC2]
Description	APC Mouse monoclonal [UIC2] to P Glycoprotein
Host species	Mouse
Conjugation	APC. Ex: 645nm, Em: 660nm
Tested applications	Suitable for: Flow Cyt
Species reactivity	Reacts with: Human
Immunogen	Tissue, cells or virus corresponding to P Glycoprotein. NIH/3T3 cells transfected with human P Glycoprotein cDNA.
Positive control	Flow Cyt: HepG2 cell suspension. Human peripheral whole blood cells.
General notes	<p>The Life Science industry has been in the grips of a reproducibility crisis for a number of years. Abcam is leading the way in addressing this with our range of recombinant monoclonal antibodies and knockout edited cell lines for gold-standard validation. Please check that this product meets your needs before purchasing.</p> <p>If you have any questions, special requirements or concerns, please send us an inquiry and/or contact our Support team ahead of purchase. Recommended alternatives for this product can be found below, along with publications, customer reviews and Q&As</p>

Properties

Form	Liquid
Storage instructions	Shipped at 4°C. Store at +4°C. Store In the Dark.
Storage buffer	pH: 7.4 Preservative: 0.0975% Sodium azide Constituent: PBS
Purity	Size exclusion
Purification notes	Purified from TCS.
Clonality	Monoclonal
Clone number	UIC2
Isotype	IgG2a
Light chain type	kappa

Applications

The Abpromise guarantee Our **Abpromise guarantee** covers the use of ab272340 in the following tested applications.

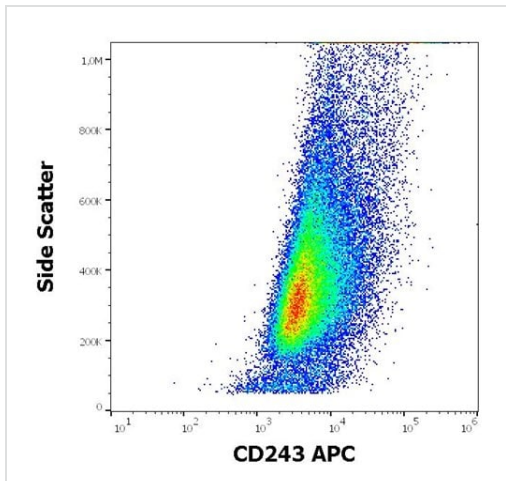
The application notes include recommended starting dilutions; optimal dilutions/concentrations should be determined by the end user.

Application	Abreviews	Notes
Flow Cyt		Use at an assay dependent concentration. The reagent is designed for analysis of human blood cells using 10 µl reagent / 100 µl of whole blood or 10 ⁶ cells in a suspension.

Target

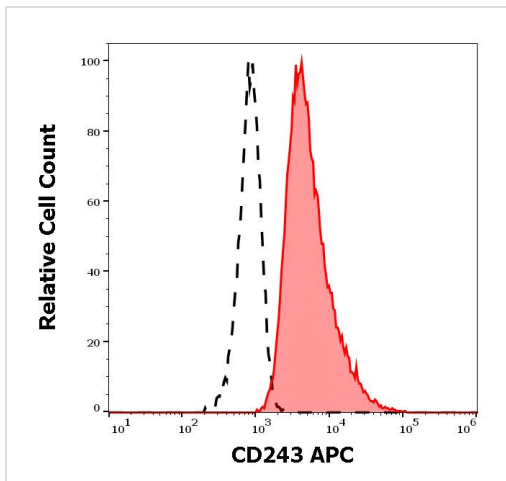
Function	Energy-dependent efflux pump responsible for decreased drug accumulation in multidrug-resistant cells.
Tissue specificity	Expressed in liver, kidney, small intestine and brain.
Involvement in disease	Genetic variations in ABCB1 are associated with susceptibility to inflammatory bowel disease type 13 (IBD13) [MIM:612244]. Inflammatory bowel disease is characterized by a chronic relapsing intestinal inflammation. It is subdivided into Crohn disease and ulcerative colitis phenotypes. Crohn disease may involve any part of the gastrointestinal tract, but most frequently the terminal ileum and colon. Bowel inflammation is transmural and discontinuous; it may contain granulomas or be associated with intestinal or perianal fistulas. In contrast, in ulcerative colitis, the inflammation is continuous and limited to rectal and colonic mucosal layers; fistulas and granulomas are not observed. Both diseases include extraintestinal inflammation of the skin, eyes, or joints. Crohn disease and ulcerative colitis are commonly classified as autoimmune diseases.
Sequence similarities	Belongs to the ABC transporter superfamily. ABCB family. Multidrug resistance exporter (TC 3.A.1.201) subfamily. Contains 2 ABC transmembrane type-1 domains. Contains 2 ABC transporter domains.
Cellular localization	Membrane.

Images



Flow Cytometry - APC Anti-P Glycoprotein antibody
[UIC2] (ab272340)

Flow cytometry surface staining pattern of HepG2 (Human liver hepatocellular carcinoma cell line) cell suspension stained using ab272340 at 10 µl reagent per milion cells in 100 µl of cell suspension. P Glycoprotein also known as CD243.



Flow Cytometry - APC Anti-P Glycoprotein antibody
[UIC2] (ab272340)

Separation of HepG2 (Human liver hepatocellular carcinoma cell line) cells (red-filled) from human peripheral whole blood cells (black-dashed) in flow cytometry analysis (surface staining) stained using ab272340 at 10 µl reagent per milion cells in 100 µl of cell suspension. P Glycoprotein also known as CD243.

Please note: All products are "FOR RESEARCH USE ONLY. NOT FOR USE IN DIAGNOSTIC PROCEDURES"

Our Abpromise to you: Quality guaranteed and expert technical support

- Replacement or refund for products not performing as stated on the datasheet
- Valid for 12 months from date of delivery
- Response to your inquiry within 24 hours

- We provide support in Chinese, English, French, German, Japanese and Spanish
- Extensive multi-media technical resources to help you
- We investigate all quality concerns to ensure our products perform to the highest standards

If the product does not perform as described on this datasheet, we will offer a refund or replacement. For full details of the Abpromise, please visit <https://www.abcam.com/abpromise> or contact our technical team.

Terms and conditions

- Guarantee only valid for products bought direct from Abcam or one of our authorized distributors