

Product datasheet

APC Anti-PD-L2 antibody [24F.10C12] ab270637

2 Images

Overview

Product name	APC Anti-PD-L2 antibody [24F.10C12]
Description	APC Mouse monoclonal [24F.10C12] to PD-L2
Host species	Mouse
Conjugation	APC. Ex: 645nm, Em: 660nm
Tested applications	Suitable for: Flow Cyt
Species reactivity	Reacts with: Human
Immunogen	Recombinant full length protein corresponding to Human PD-L2. Database link: Q9BQ51
Positive control	Flow: Human stimulated monocytes (GM-CSF + IL-4) and human dendritic cells differentiated upon monocyte stimulation (GM-CSF + IL-4).
General notes	<p>The Life Science industry has been in the grips of a reproducibility crisis for a number of years. Abcam is leading the way in addressing this with our range of recombinant monoclonal antibodies and knockout edited cell lines for gold-standard validation. Please check that this product meets your needs before purchasing.</p> <p>If you have any questions, special requirements or concerns, please send us an inquiry and/or contact our Support team ahead of purchase. Recommended alternatives for this product can be found below, along with publications, customer reviews and Q&As</p>

Properties

Form	Liquid
Storage instructions	Shipped at 4°C. Store at +4°C short term (1-2 weeks). Upon delivery aliquot. Store at +4°C. Store In the Dark.
Storage buffer	pH: 7.4 Preservative: 0.1% Sodium azide Constituent: PBS
Purity	Size exclusion
Clonality	Monoclonal
Clone number	24F.10C12
Isotype	IgG2a

Light chain type

kappa

Applications

The Abpromise guarantee

Our **Abpromise guarantee** covers the use of ab270637 in the following tested applications.

The application notes include recommended starting dilutions; optimal dilutions/concentrations should be determined by the end user.

Application	Abreviews	Notes
Flow Cyt		Use 10µl for 10 ⁶ cells.

Target

Function

Involved in the costimulatory signal, essential for T-cell proliferation and IFNG production in a PDCD1-independent manner. Interaction with PDCD1 inhibits T-cell proliferation by blocking cell cycle progression and cytokine production.

Tissue specificity

Highly expressed in heart, placenta, pancreas, lung and liver and weakly expressed in spleen, lymph nodes and thymus.

Sequence similarities

Belongs to the immunoglobulin superfamily. BTN/MOG family.

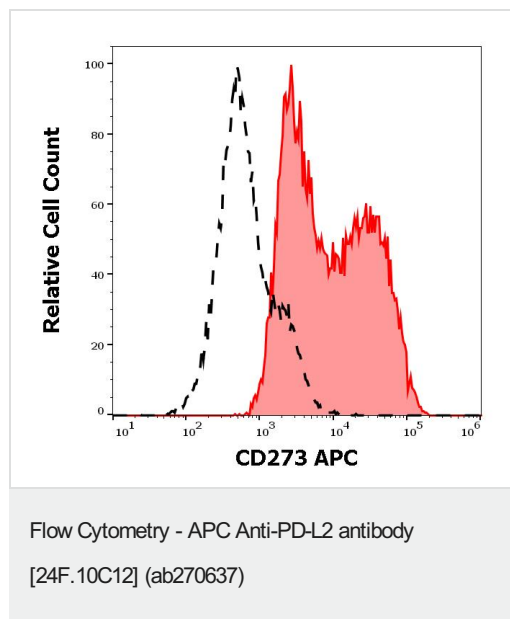
Contains 1 Ig-like C2-type (immunoglobulin-like) domain.

Contains 1 Ig-like V-type (immunoglobulin-like) domain.

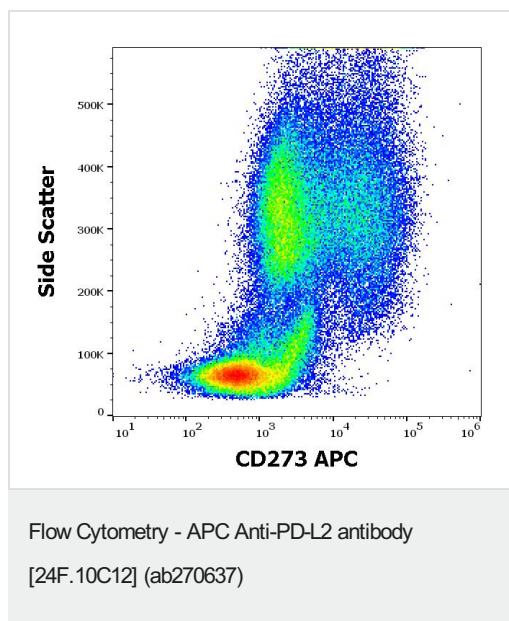
Cellular localization

Secreted; Cell membrane and Endomembrane system.

Images



Flow cytometry analysis of human dendritic cells differentiated upon monocyte stimulation (GM-CSF + IL-4) (red) and non-stimulated lymphocytes cells (black) labeling PD-L2 using ab270637. Concentration of 10 µl reagent/100µl peripheral whole blood. Surface staining.



Flow cytometric analysis of human stimulated monocytes (GM-CSF + IL4) labeling PD-L2 using ab270637. Concentration of 10 μ l reagent per million cells in 100 μ l of cell suspension.

Please note: All products are "FOR RESEARCH USE ONLY. NOT FOR USE IN DIAGNOSTIC PROCEDURES"

Our Abpromise to you: Quality guaranteed and expert technical support

- Replacement or refund for products not performing as stated on the datasheet
- Valid for 12 months from date of delivery
- Response to your inquiry within 24 hours
- We provide support in Chinese, English, French, German, Japanese and Spanish
- Extensive multi-media technical resources to help you
- We investigate all quality concerns to ensure our products perform to the highest standards

If the product does not perform as described on this datasheet, we will offer a refund or replacement. For full details of the Abpromise, please visit <https://www.abcam.com/abpromise> or contact our technical team.

Terms and conditions

- Guarantee only valid for products bought direct from Abcam or one of our authorized distributors