

APC Anti-PD1 antibody [EH12.2H7] ab272338

[2 Images](#)

Overview

Product name	APC Anti-PD1 antibody [EH12.2H7]
Description	APC Mouse monoclonal [EH12.2H7] to PD1
Host species	Mouse
Conjugation	APC. Ex: 645nm, Em: 660nm
Tested applications	Suitable for: Flow Cyt
Species reactivity	Reacts with: Human
Immunogen	Recombinant fragment corresponding to Human PD1. recombinant human CD279
Epitope	Extracellular
Positive control	Flow Cyt: PHA stimulated human peripheral blood mononuclear cells. PD1 positive cells.
General notes	<p>The Life Science industry has been in the grips of a reproducibility crisis for a number of years. Abcam is leading the way in addressing this with our range of recombinant monoclonal antibodies and knockout edited cell lines for gold-standard validation. Please check that this product meets your needs before purchasing.</p> <p>If you have any questions, special requirements or concerns, please send us an inquiry and/or contact our Support team ahead of purchase. Recommended alternatives for this product can be found below, along with publications, customer reviews and Q&As</p>

Properties

Form	Liquid
Storage instructions	Shipped at 4°C. Store at +4°C. Store In the Dark.
Storage buffer	<p>pH: 7.4</p> <p>Preservative: 0.0975% Sodium azide</p> <p>Constituent: PBS</p>
Purity	Size exclusion
Purification notes	Purified from TCS.
Clonality	Monoclonal
Clone number	EH12.2H7
Isotype	IgG1

Light chain type

kappa

Applications

The Abpromise guarantee

Our **Abpromise guarantee** covers the use of ab272338 in the following tested applications.

The application notes include recommended starting dilutions; optimal dilutions/concentrations should be determined by the end user.

Application	Abreviews	Notes
Flow Cyt		Use at an assay dependent concentration. The reagent is designed for analysis of human blood cells using 10 µl reagent / 100 µl of whole blood or 10 ⁶ cells in a suspension.

Target

Function

Possible cell death inducer, in association with other factors.

Involvement in disease

Genetic variation in PDCD1 is associated with susceptibility to systemic lupus erythematosus type 2 (SLEB2) [MIM:605218]. Systemic lupus erythematosus is a chronic, inflammatory and often febrile multisystemic disorder of connective tissue. It affects principally the skin, joints, kidneys and serosal membranes. It is thought to represent a failure of the regulatory mechanisms of the autoimmune system.

Sequence similarities

Contains 1 Ig-like V-type (immunoglobulin-like) domain.

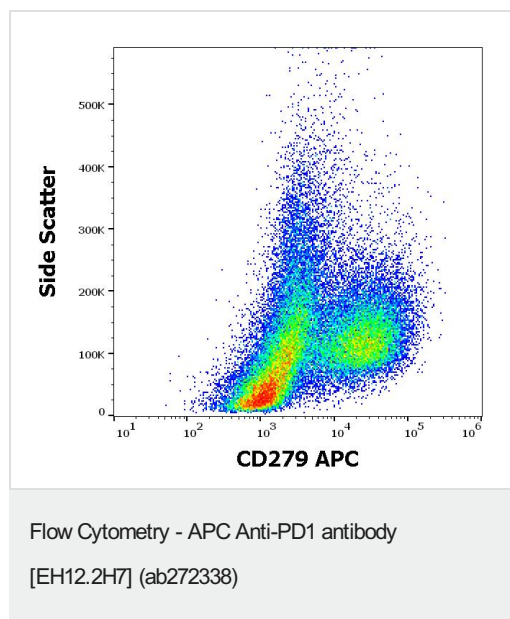
Developmental stage

Induced at programmed cell death.

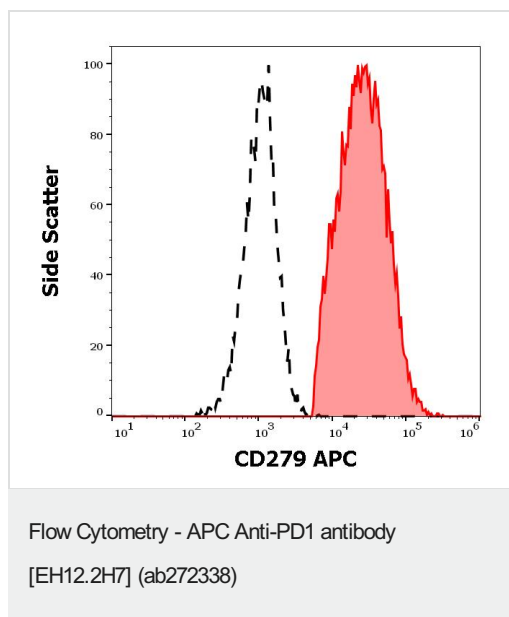
Cellular localization

Membrane.

Images



Flow cytometry surface staining pattern of human PHA stimulated peripheral blood mononuclear cells stained using ab272338 at 10 µl reagent per million cells in 100 µl of cell suspension. PD1 also known as CD279.



Separation of human PD1 positive cells (red-filled) from cellular debris (black-dashed) in flow cytometry analysis (surface staining) of human PHA stimulated peripheral blood mononuclear cells stained using ab272338 at 10 µl reagent per million cells in 100 µl of cell suspension. PD1 also known as CD279.

Please note: All products are "FOR RESEARCH USE ONLY. NOT FOR USE IN DIAGNOSTIC PROCEDURES"

Our Abpromise to you: Quality guaranteed and expert technical support

- Replacement or refund for products not performing as stated on the datasheet
- Valid for 12 months from date of delivery
- Response to your inquiry within 24 hours
- We provide support in Chinese, English, French, German, Japanese and Spanish
- Extensive multi-media technical resources to help you
- We investigate all quality concerns to ensure our products perform to the highest standards

If the product does not perform as described on this datasheet, we will offer a refund or replacement. For full details of the Abpromise, please visit <https://www.abcam.com/abpromise> or contact our technical team.

Terms and conditions

- Guarantee only valid for products bought direct from Abcam or one of our authorized distributors