

Product datasheet

APC Anti-Prolactin Receptor/PRL-R antibody [204] ab275715

Recombinant

[2 Images](#)

Overview

Product name	APC Anti-Prolactin Receptor/PRL-R antibody [204]
Description	APC Rabbit monoclonal [204] to Prolactin Receptor/PRL-R
Host species	Rabbit
Conjugation	APC. Ex: 645nm, Em: 660nm
Tested applications	Suitable for: Flow Cyt
Species reactivity	Reacts with: Human
Immunogen	Recombinant fragment (His-tag) corresponding to Human Prolactin Receptor/PRL-R aa 1-250 (extracellular). Database link: P16471
Positive control	Flow Cyt: MCF-7 cells

Properties

Form	Liquid
Storage instructions	Shipped at 4°C. Store at +4°C. Do Not Freeze. Store In the Dark.
Storage buffer	Preservative: 0.09% Sodium azide Constituent: 0.5% BSA
Purity	Protein A purified
Clonality	Monoclonal
Clone number	204
Isotype	IgG

Applications

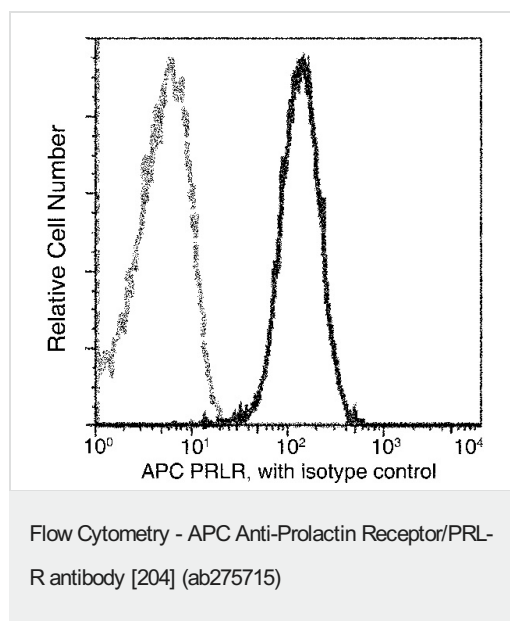
The Abpromise guarantee Our [Abpromise guarantee](#) covers the use of ab275715 in the following tested applications.
The application notes include recommended starting dilutions; optimal dilutions/concentrations should be determined by the end user.

Application	Abreviews	Notes
Flow Cyt		Use at an assay dependent concentration. 10 µL/Test

Target

Function	This is a receptor for the anterior pituitary hormone prolactin (PRL). Isoform 4 is unable to transduce prolactin signaling. Isoform 6 is unable to transduce prolactin signaling.
Tissue specificity	Expressed in breast, placenta, kidney, liver and pancreas.
Sequence similarities	Belongs to the type I cytokine receptor family. Type 1 subfamily. Contains 2 fibronectin type-III domains.
Domain	The WSXWS motif appears to be necessary for proper protein folding and thereby efficient intracellular transport and cell-surface receptor binding. The box 1 motif is required for JAK interaction and/or activation.
Cellular localization	Secreted and Membrane.

Images



Flow cytometric analysis of human PRLR expression on MCF-7 cells. MCF-7 cells were stained with ab275715. The histogram was derived from gated events with the forward and side light-scatter characteristics of intact cells.

Why choose a recombinant antibody?



Research with confidence
Consistent and reproducible results



Long-term and scalable supply
Recombinant technology



Success from the first experiment
Confirmed specificity



Ethical standards compliant
Animal-free production

APC Anti-Prolactin Receptor/PRL-R antibody [204]
(ab275715)

Please note: All products are "FOR RESEARCH USE ONLY. NOT FOR USE IN DIAGNOSTIC PROCEDURES"

Our Abpromise to you: Quality guaranteed and expert technical support

- Replacement or refund for products not performing as stated on the datasheet
- Valid for 12 months from date of delivery
- Response to your inquiry within 24 hours
- We provide support in Chinese, English, French, German, Japanese and Spanish
- Extensive multi-media technical resources to help you
- We investigate all quality concerns to ensure our products perform to the highest standards

If the product does not perform as described on this datasheet, we will offer a refund or replacement. For full details of the Abpromise, please visit <https://www.abcam.com/abpromise> or contact our technical team.

Terms and conditions

- Guarantee only valid for products bought direct from Abcam or one of our authorized distributors