

Product datasheet

APC Rabbit IgG, monoclonal [EPR25A] - Isotype Control ab232814

Recombinant RabMAb

[1 References](#) [3 Images](#)

Overview

Product name	APC Rabbit IgG, monoclonal [EPR25A] - Isotype Control
Conjugation	APC. Ex: 645nm, Em: 660nm
Tested applications	Suitable for: Flow Cyt (Intra)
Immunogen	Chemical/ Small Molecule conjugated to keyhole limpet haemocyanin. KLH is a copper containing oxygen carrier occurring freely dissolved in the hemolymph of many molluscs and arthropods. KLH forms a large complex composed of ~50 kDa subunits.
General notes	<p>KLH is often used in molecular immunology as a carrier protein conjugated to low molecular weight molecules such as peptides, amino acids, nucleic acids, drugs or toxins to render them more immunogenic due to the size of the conjugate complex and the immunogenicity of KLH.</p> <p>This product is a recombinant monoclonal antibody, which offers several advantages including:</p> <ul style="list-style-type: none">- High batch-to-batch consistency and reproducibility- Improved sensitivity and specificity- Long-term security of supply- Animal-free production <p>For more information see here.</p> <p>Our RabMAb[®] technology is a patented hybridoma-based technology for making rabbit monoclonal antibodies. For details on our patents, please refer to RabMAb[®] patents.</p>

Properties

Form	Liquid
Storage instructions	Shipped at 4°C. Upon delivery aliquot. Store at +4°C. Do Not Freeze. Store In the Dark.
Storage buffer	pH: 7.40 Preservative: 0.02% Sodium azide Constituents: 1% BSA, PBS
Purity	Protein A purified
Clonality	Monoclonal
Clone number	EPR25A

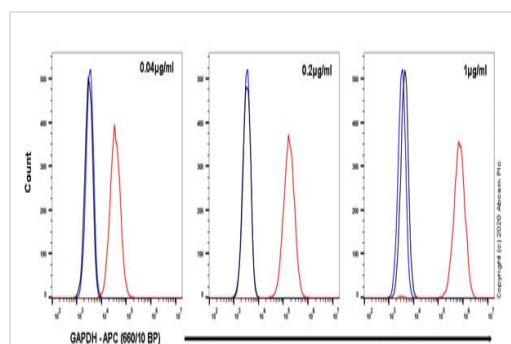
Isotype	IgG
Cellular localization	Secreted

Applications

The Abpromise guarantee Our **Abpromise guarantee** covers the use of ab232814 in the following tested applications. The application notes include recommended starting dilutions; optimal dilutions/concentrations should be determined by the end user.

Application	Abreviews	Notes
Flow Cyt (Intra)		Use at an assay dependent concentration. Please note: This product should be diluted to the same concentration (not dilution) of the primary antibody to be used.

Images

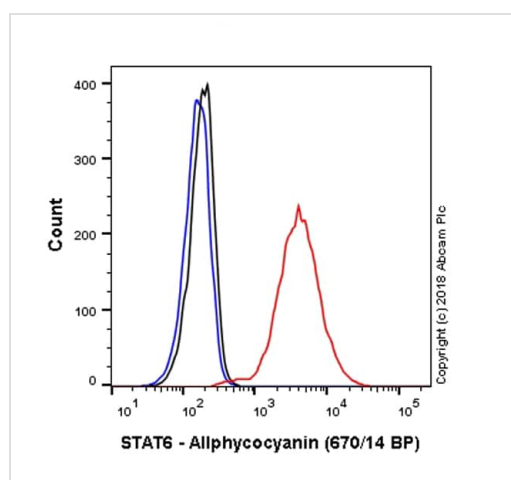


Flow Cytometry (Intracellular) - APC Rabbit IgG, monoclonal [EPR25A] - Isotype Control (ab232814)

Flow cytometry overlay histogram showing HeLa cells stained with **ab221270** (red line). The cells were fixed with 4% formaldehyde (10 min) and then permeabilized with 90% Methanol for 30 min at -20°C. The cells were incubated in 1x PBS containing 10% normal goat serum to block non-specific protein-protein interaction followed by the antibody (**ab221270**) (1×10^6 in $100 \mu\text{L}$ at 0.04, 0.2, $1 \mu\text{g/mL}$ (1/12500, 1/2500, 1/500)) for 30 min at 22°C.

Isotype control antibody (black line) was used at the same concentration and conditions as the primary antibody. Unlabelled sample (blue line) was also used as a control.

Acquisition of >5000 events were collected using a 50 mW Red laser (638nm) and 660/10 bandpass filter.



Flow Cytometry (Intracellular) - APC Rabbit IgG, monoclonal [EPR25A] - Isotype Control (ab232814)

Overlay histogram showing NIH3T3 cells stained with **ab223919** (red line). The cells were fixed with 4% formaldehyde (10 min) and then permeabilized with 0.1% PBS-Triton X-100 for 15 min. The cells were then incubated in 1x PBS / 10% normal goat serum to block non-specific protein-protein interactions followed by the antibody (**ab223919**, 1/500 dilution) for 30 min at 22°C.


Isotype control antibody (black line) was Rabbit IgG (monoclonal) Allophycocyanin (ab232814) used at the same concentration and conditions as the primary antibody. Unlabelled sample (blue line) was also used as a control.

Acquisition of >5,000 events were collected using a 40 mW Red laser (640nm) and 670/14 bandpass filter.

This antibody gave a positive signal in NIH3T3 cells fixed with 80%

methanol (5 min)/permeabilized with 0.1% PBS-Triton X-100 for 15 min used under the same conditions.

Why choose a recombinant antibody?



- Research with confidence**
Consistent and reproducible results
- Long-term and scalable supply**
Recombinant technology
- Success from the first experiment**
Confirmed specificity
- Ethical standards compliant**
Animal-free production

APC Rabbit IgG, monoclonal [EPR25A] - Isotype Control (ab232814)

Please note: All products are "FOR RESEARCH USE ONLY. NOT FOR USE IN DIAGNOSTIC PROCEDURES"

Our Abpromise to you: Quality guaranteed and expert technical support

- Replacement or refund for products not performing as stated on the datasheet
- Valid for 12 months from date of delivery
- Response to your inquiry within 24 hours
- We provide support in Chinese, English, French, German, Japanese and Spanish
- Extensive multi-media technical resources to help you
- We investigate all quality concerns to ensure our products perform to the highest standards

If the product does not perform as described on this datasheet, we will offer a refund or replacement. For full details of the Abpromise, please visit <https://www.abcam.com/abpromise> or contact our technical team.

Terms and conditions

- Guarantee only valid for products bought direct from Abcam or one of our authorized distributors