

## Product datasheet

# APC Anti-TFEB antibody [EPR22940-151] ab283612

Recombinant RabMAb

1 Image

### Overview

<b>Product name</b>	APC Anti-TFEB antibody [EPR22940-151]
<b>Description</b>	APC Rabbit monoclonal [EPR22940-151] to TFEB
<b>Host species</b>	Rabbit
<b>Conjugation</b>	APC. Ex: 645nm, Em: 660nm
<b>Tested applications</b>	<b>Suitable for:</b> Flow Cyt (Intra)
<b>Species reactivity</b>	<b>Reacts with:</b> Human
<b>Immunogen</b>	Synthetic peptide. This information is proprietary to Abcam and/or its suppliers.
<b>Positive control</b>	Flow Cyt (Intra): Raji cells.
<b>General notes</b>	<p>This antibody clone is manufactured by Abcam. If you require a custom buffer formulation or conjugation for experiments, please contact <a href="mailto:orders@abcam.com">orders@abcam.com</a>.</p> <p>This product is a recombinant monoclonal antibody, which offers several advantages including:</p> <ul style="list-style-type: none"><li>- High batch-to-batch consistency and reproducibility</li><li>- Improved sensitivity and specificity</li><li>- Long-term security of supply</li><li>- Animal-free production</li></ul> <p>For more information <a href="#">see here</a>.</p> <p>Our RabMAb<sup>®</sup> technology is a patented hybridoma-based technology for making rabbit monoclonal antibodies. For details on our patents, please refer to <a href="#">RabMAb<sup>®</sup> patents</a>.</p>

### Properties

<b>Form</b>	Liquid
<b>Storage instructions</b>	Shipped at 4°C. Store at +4°C short term (1-2 weeks). Upon delivery aliquot. Store at +4°C. Store In the Dark.
<b>Storage buffer</b>	pH: 7.40 Preservative: 0.02% Sodium azide Constituents: 1% BSA, 98% PBS
<b>Purity</b>	Protein A purified
<b>Clonality</b>	Monoclonal

Clone number                      EPR22940-151

Isotype                                IgG

## Applications

---

**The Abpromise guarantee**            Our **Abpromise guarantee** covers the use of ab283612 in the following tested applications.

The application notes include recommended starting dilutions; optimal dilutions/concentrations should be determined by the end user.

Application	Abreviews	Notes
Flow Cyt (Intra)		1/62500.

## Target

---

**Function**                                Transcription factor that specifically recognizes and binds E-box sequences (3'-CANNTG-5'). Efficient DNA-binding requires dimerization with itself or with another MiT/TFE family member such as TFE3 or MITF. In association with TFE3, activates the expression of CD40L in T-cells, thereby playing a role in T-cell-dependent antibody responses in activated CD4(+) T-cells and thymus-dependent humoral immunity. Specifically recognizes and binds the CLEAR-box sequence (5'-GTCACGTGAC-3') present in the regulatory region of many lysosomal genes, leading to activate their expression. It thereby plays a central role in expression of lysosomal genes. Specifically recognizes the gamma-E3 box, a subset of E-boxes, present in the heavy-chain immunoglobulin enhancer. Plays a role in the signal transduction processes required for normal vascularization of the placenta.

**Sequence similarities**                Belongs to the MiT/TFE family.  
Contains 1 basic helix-loop-helix (bHLH) domain.

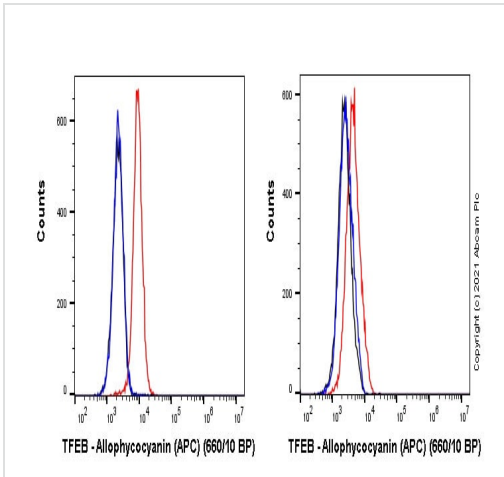
**Domain**                                    The leucin zipper region is essential for homo- or heterodimerization and high-affinity DNA binding. DNA binding is mediated by the basic region.

**Post-translational modifications**    Sumoylated; does not affect dimerization with MITF.

**Cellular localization**                 Cytoplasm. Nucleus. Mainly present in the cytoplasm. Under aberrant lysosomal storage conditions, it translocates from the cytoplasm to the nucleus.

## Images

---



Flow Cytometry (Intracellular) - APC Anti-TFEB antibody [EPR22940-151] (ab283612)

Flow cytometry overlay histogram showing left Raji positive cells and right negative MCF7 cells stained with ab283612 (red line). The cells were fixed with 80 % methanol (5 min); and then permeabilized with 0.1% PBS-Triton X-100 for 15 min. The cells were then incubated in 1x PBS containing 10 % normal goat serum to block non-specific protein-protein interaction followed by the antibody (ab283612) ( $1 \times 10^6$  in 100  $\mu$ l at 0.008  $\mu$ g/ml (1/62500 dilution)) for 30 min at 22°C.

Isotype control antibody (black line) was Rabbit IgG (monoclonal) Allophycocyanin (**ab232814**) used at the same concentration and conditions as the primary antibody. Unlabelled sample (blue line) was also used as a control.

Acquisition of >5000 events were collected using a 40 mW Red laser (638nm) and 660/10 bandpass filter.

**Please note:** All products are "FOR RESEARCH USE ONLY. NOT FOR USE IN DIAGNOSTIC PROCEDURES"

### Our Abpromise to you: Quality guaranteed and expert technical support

- Replacement or refund for products not performing as stated on the datasheet
- Valid for 12 months from date of delivery
- Response to your inquiry within 24 hours
- We provide support in Chinese, English, French, German, Japanese and Spanish
- Extensive multi-media technical resources to help you
- We investigate all quality concerns to ensure our products perform to the highest standards

If the product does not perform as described on this datasheet, we will offer a refund or replacement. For full details of the Abpromise, please visit <https://www.abcam.com/abpromise> or contact our technical team.

### Terms and conditions

- Guarantee only valid for products bought direct from Abcam or one of our authorized distributors