


Product datasheet

Anti-Apc1 (phospho S355) antibody ab10923

[1 References](#) [1 Image](#)

Overview

| | |
|----------------------------|--|
| Product name | Anti-Apc1 (phospho S355) antibody |
| Description | Rabbit polyclonal to Apc1 (phospho S355) |
| Host species | Rabbit |
| Specificity | Less than 1% reactivity is observed against the non-phosphorylated form of the immunizing peptide. This antibody is expected to be phospho-specific for S355 of APC1. |
| Tested applications | Suitable for: WB |
| Species reactivity | Reacts with: Human Predicted to work with: Mouse, Rat, Cow, Dog  |
| Immunogen | Synthetic peptide corresponding to Human Apc1 aa 350-450 (phospho S355) conjugated to keyhole limpet haemocyanin. |

 [Run BLAST with](#)

 [Run BLAST with](#)

General notes

This is one of a number of novel phosphorylation sites for APC1 identified in Kraft C et al. It may be involved in the regulation of the APC/C.

The Life Science industry has been in the grips of a reproducibility crisis for a number of years. Abcam is leading the way in addressing this with our range of recombinant monoclonal antibodies and knockout edited cell lines for gold-standard validation. Please check that this product meets your needs before purchasing.

If you have any questions, special requirements or concerns, please send us an inquiry and/or contact our Support team ahead of purchase. Recommended alternatives for this product can be found below, along with publications, customer reviews and Q&As

Properties

| | |
|-----------------------------|---|
| Form | Liquid |
| Storage instructions | Shipped at 4°C. Upon delivery aliquot and store at -20°C or -80°C. Avoid repeated freeze / thaw cycles. |
| Storage buffer | Preservative: 0.01% Sodium azide Constituents: 0.42% Potassium phosphate, 0.87% Sodium chloride |
| Purity | Immunogen affinity purified |

| | |
|-------------------------------|---|
| Purification notes | This affinity purified antibody is directed against the phosphorylated form of human APC1 at the pS355 residue. The product was affinity purified from monospecific antiserum by immunoaffinity purification. Antiserum was first purified against the phosphorylated form of the immunizing peptide. The resultant affinity purified antibody was then cross-adsorbed against the non-phosphorylated form of the immunizing peptide. |
| Primary antibody notes | This is one of a number of novel phosphorylation sites for APC1 identified in Kraft C et al. It may be involved in the regulation of the APC/C. |
| Clonality | Polyclonal |
| Isotype | IgG |

Applications

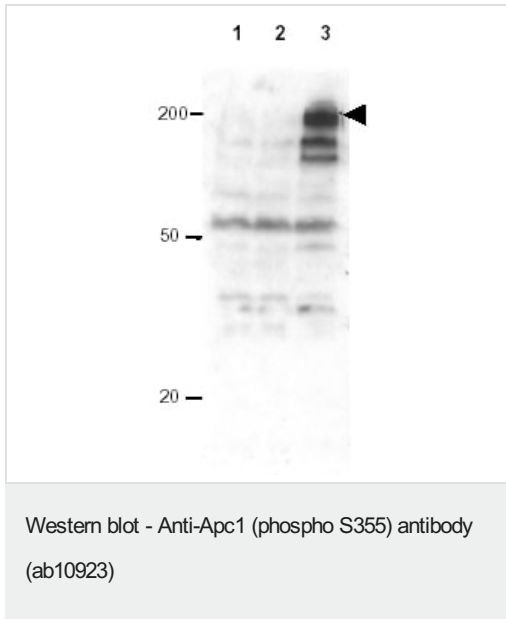
The Abpromise guarantee Our **Abpromise guarantee** covers the use of ab10923 in the following tested applications. The application notes include recommended starting dilutions; optimal dilutions/concentrations should be determined by the end user.

| Application | Abreviews | Notes |
|-------------|-----------|--|
| WB | | 1/200 - 1/2000. Detects a band of approximately 215 kDa (predicted molecular weight: 215 kDa). |

Target

| | |
|---|---|
| Function | Component of the anaphase promoting complex/cyclosome (APC/C), a cell cycle-regulated E3 ubiquitin ligase that controls progression through mitosis and the G1 phase of the cell cycle. The APC/C complex acts by mediating ubiquitination and subsequent degradation of target proteins: it mainly mediates the formation of 'Lys-11'-linked polyubiquitin chains and, to a lower extent, the formation of 'Lys-48'- and 'Lys-63'-linked polyubiquitin chains. |
| Pathway | Protein modification; protein ubiquitination. |
| Sequence similarities | Belongs to the APC1 family. Contains 4 PC repeats. |
| Post-translational modifications | Phosphorylated. Phosphorylation on Ser-355 occurs specifically during mitosis. |

Images



All lanes : Anti-Apc1 (phospho S355) antibody (ab10923) at 1/500 dilution

Lane 1 : HeLa S3 whole cell lysate (asynchronous cells)

Lane 2 : HeLa S3 whole cell lysate (cells synchronized at G1/S boundary by treatment with thymidine)

Lane 3 : HeLa S3 whole cell lysate (cells synchronized at M phase by treatment with nocodazole)

Lysates/proteins at 30 µg per lane.

Secondary

All lanes : Goat anti-Rabbit IgG [H&L] at 1/5000 dilution

Developed using the ECL technique.

Performed under reducing conditions.

Predicted band size: 215 kDa

Observed band size: 215 kDa

Phosphorylated APC1 is mostly present only in cell preparations arrested at cell division.

Please note: All products are "FOR RESEARCH USE ONLY. NOT FOR USE IN DIAGNOSTIC PROCEDURES"

Our Abpromise to you: Quality guaranteed and expert technical support

- Replacement or refund for products not performing as stated on the datasheet
- Valid for 12 months from date of delivery
- Response to your inquiry within 24 hours
- We provide support in Chinese, English, French, German, Japanese and Spanish

- Extensive multi-media technical resources to help you
- We investigate all quality concerns to ensure our products perform to the highest standards

If the product does not perform as described on this datasheet, we will offer a refund or replacement. For full details of the Abpromise, please visit <https://www.abcam.com/abpromise> or contact our technical team.

Terms and conditions

- Guarantee only valid for products bought direct from Abcam or one of our authorized distributors