


## Product datasheet

# Anti-Apc11 antibody ab154546

[1 References](#) [1 Image](#)

### Overview

---

|                            |   |
|----------------------------|---|
| <b>Product name</b>        | Anti-Apc11 antibody   |
| <b>Description</b>         | Rabbit polyclonal to Apc11  |
| <b>Host species</b>        | Rabbit  |
| <b>Tested applications</b> | <b>Suitable for:</b> WB   |
| <b>Species reactivity</b>  | <b>Reacts with:</b> Human<br><b>Predicted to work with:</b> Mouse, Rat, Cow, Xenopus laevis, Zebrafish, Xenopus tropicalis   |
| <b>Immunogen</b>           | Synthetic peptide, corresponding to a region within amino acids 26-84 of Human Apc11 (Uniprot ID: Q9NYG5).  |
| <b>Positive control</b>    | 293T, H1299, HeLaS3, HepG2, MOLT4, Raji whole cell lysate   |
| <b>General notes</b>       | <p>The Life Science industry has been in the grips of a reproducibility crisis for a number of years. Abcam is leading the way in addressing this with our range of recombinant monoclonal antibodies and knockout edited cell lines for gold-standard validation. Please check that this product meets your needs before purchasing.</p> <p>If you have any questions, special requirements or concerns, please send us an inquiry and/or contact our Support team ahead of purchase. Recommended alternatives for this product can be found below, along with publications, customer reviews and Q&amp;As</p> |

### Properties

---

|                             |   |
|-----------------------------|---|
| <b>Form</b>                 | Liquid  |
| <b>Storage instructions</b> | Shipped at 4°C. Upon delivery aliquot. Store at -20°C or -80°C. Avoid freeze / thaw cycle.  |
| <b>Storage buffer</b>       | pH: 7.00<br>Preservative: 0.01% Thimerosal (merthiolate)<br>Constituents: 1.21% Tris, 0.75% Glycine, 10% Glycerol (glycerin, glycerine) |
| <b>Purity</b>               | Immunogen affinity purified   |
| <b>Clonality</b>            | Polyclonal  |
| <b>Isotype</b>              | IgG   |

### Applications

---

## The Abpromise guarantee

Our **Abpromise guarantee** covers the use of ab154546 in the following tested applications.

The application notes include recommended starting dilutions; optimal dilutions/concentrations should be determined by the end user.

| Application | Abreviews | Notes  |
|-------------|-----------|--|
| WB          |           | 1/500 - 1/3000. Predicted molecular weight: 9 kDa. |

## Target

### Function

Component of the anaphase promoting complex/cyclosome (APC/C), a cell cycle-regulated E3 ubiquitin ligase that controls progression through mitosis and the G1 phase of the cell cycle. The APC/C complex acts by mediating ubiquitination and subsequent degradation of target proteins: it mainly mediates the formation of 'Lys-11'-linked polyubiquitin chains and, to a lower extent, the formation of 'Lys-48'- and 'Lys-63'-linked polyubiquitin chains. May recruit the E2 ubiquitin-conjugating enzymes to the complex.

### Tissue specificity

Expressed at high levels in skeletal muscle and heart; in moderate levels in brain, kidney, and liver; and at low levels in colon, thymus, spleen, small intestine, placenta, lung and peripheral blood leukocyte.

### Pathway

Protein modification; protein ubiquitination.

### Sequence similarities

Belongs to the RING-box family.  
Contains 1 RING-type zinc finger.

### Domain

The RING-type zinc finger domain coordinates an additional third zinc ion.

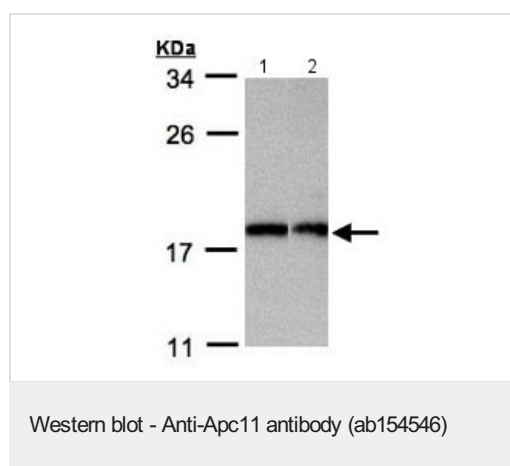
### Post-translational modifications

Auto-ubiquitinated.

### Cellular localization

Cytoplasm. Nucleus.

## Images



**All lanes** : Anti-Apc11 antibody (ab154546) at 1/5000 dilution

**Lane 1** : H1299 whole cell lysate

**Lane 2** : MOLT4 whole cell lysate

Lysates/proteins at 30 µg per lane.

**Predicted band size:** 9 kDa

15% SDS PAGE

**Please note:** All products are "FOR RESEARCH USE ONLY. NOT FOR USE IN DIAGNOSTIC PROCEDURES"

## **Our Abpromise to you: Quality guaranteed and expert technical support**

---

- Replacement or refund for products not performing as stated on the datasheet
- Valid for 12 months from date of delivery
- Response to your inquiry within 24 hours
  
- We provide support in Chinese, English, French, German, Japanese and Spanish
- Extensive multi-media technical resources to help you
- We investigate all quality concerns to ensure our products perform to the highest standards

If the product does not perform as described on this datasheet, we will offer a refund or replacement. For full details of the Abpromise, please visit <https://www.abcam.com/abpromise> or contact our technical team.

## **Terms and conditions**

---

- Guarantee only valid for products bought direct from Abcam or one of our authorized distributors