

# Anti-Apc6 antibody [EPR11168] - BSA and Azide free ab249488

Recombinant RabMAb

7 Images

### Overview

Product name	Anti-Apc6 antibody [EPR11168] - BSA and Azide free
Description	Rabbit monoclonal [EPR11168] to Apc6 - BSA and Azide free
Host species	Rabbit
Tested applications	<b>Suitable for:</b> ICC/IF, IHC-P, WB <b>Unsuitable for:</b> Flow Cyt
Species reactivity	<b>Reacts with:</b> Human
Immunogen	Synthetic peptide within Human Apc6. The exact sequence is proprietary. Database link: <a href="#">Q13042</a>
General notes	<p>ab249488 is the carrier-free version of <a href="#">ab169536</a>.</p> <p>Our <b>carrier-free</b> antibodies are typically supplied in a PBS-only formulation, purified and free of BSA, sodium azide and glycerol. The carrier-free buffer and high concentration allow for increased conjugation efficiency.</p> <p>This conjugation-ready format is designed for use with fluorochromes, metal isotopes, oligonucleotides, and enzymes, which makes them ideal for antibody labelling, functional and cell-based assays, flow-based assays (e.g. mass cytometry) and Multiplex Imaging applications.</p> <p>Use our <b>conjugation kits</b> for antibody conjugates that are ready-to-use in as little as 20 minutes with &lt;1 minute hands-on-time and 100% antibody recovery: available for fluorescent dyes, HRP, biotin and gold.</p> <p>This product is compatible with the Maxpar<sup>®</sup> Antibody Labeling Kit from Fluidigm, without the need for antibody preparation. Maxpar<sup>®</sup> is a trademark of Fluidigm Canada Inc.</p> <p>This product is a recombinant monoclonal antibody, which offers several advantages including:</p> <ul style="list-style-type: none"> <li>- High batch-to-batch consistency and reproducibility</li> <li>- Improved sensitivity and specificity</li> <li>- Long-term security of supply</li> <li>- Animal-free production</li> </ul> <p>For more information <a href="#">see here</a>.</p> <p>Our RabMAb<sup>®</sup> technology is a patented hybridoma-based technology for making rabbit monoclonal antibodies. For details on our patents, please refer to <a href="#">RabMAb<sup>®</sup> patents</a>.</p>

## Properties

Form	Liquid
Storage instructions	Shipped at 4°C. Store at +4°C. Do Not Freeze.
Storage buffer	pH: 7.2 Constituent: PBS
Carrier free	Yes
Purity	Protein A purified
Clonality	Monoclonal
Clone number	EPR11168
Isotype	IgG

## Applications

**The Abpromise guarantee** Our **Abpromise guarantee** covers the use of ab249488 in the following tested applications.

The application notes include recommended starting dilutions; optimal dilutions/concentrations should be determined by the end user.

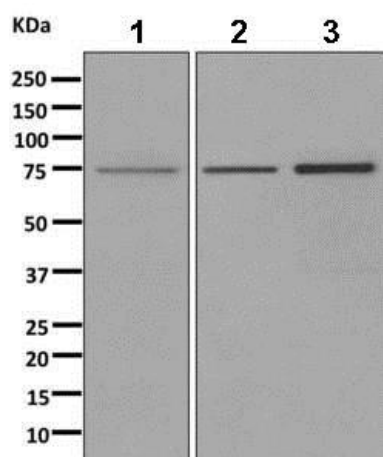
Application	Abreviews	Notes
ICC/IF		Use at an assay dependent concentration.
IHC-P		Use at an assay dependent concentration. Perform heat mediated antigen retrieval with citrate buffer pH 6 before commencing with IHC staining protocol.
WB		Use at an assay dependent concentration. Predicted molecular weight: 71 kDa.

**Application notes** Is unsuitable for Flow Cyt.

## Target

Function	Component of the anaphase promoting complex/cyclosome (APC/C), a cell cycle-regulated E3 ubiquitin ligase that controls progression through mitosis and the G1 phase of the cell cycle. The APC/C complex acts by mediating ubiquitination and subsequent degradation of target proteins: it mainly mediates the formation of 'Lys-11'-linked polyubiquitin chains and, to a lower extent, the formation of 'Lys-48'- and 'Lys-63'-linked polyubiquitin chains.
Pathway	Protein modification; protein ubiquitination.
Sequence similarities	Belongs to the APC6/CDC16 family. Contains 7 TPR repeats.
Post-translational modifications	Phosphorylated. Phosphorylation on Ser-560 occurs specifically during mitosis.
Cellular localization	Cytoplasm > cytoskeleton > centrosome. Cytoplasm > cytoskeleton > spindle. Colocalizes with CDC27 to the centrosome at all stages of the cell cycle and to the mitotic spindle.

## Images



Western blot - Anti-Apc6 antibody [EPR11168] - BSA and Azide free (ab249488)

**All lanes :** Anti-Apc6 antibody [EPR11168] ([ab169536](#)) at 1/1000 dilution

**Lane 1 :** HT-1080 cell lysate

**Lane 2 :** HepG2 cell lysate

**Lane 3 :** HeLa cell lysate

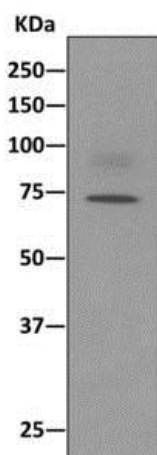
Lysates/proteins at 10 µg per lane.

#### Secondary

**All lanes :** HRP labeled goat anti-rabbit at 1/2000 dilution

**Predicted band size:** 71 kDa

This data was developed using [ab169536](#), the same antibody clone in a different buffer formulation.



Western blot - Anti-Apc6 antibody [EPR11168] - BSA and Azide free (ab249488)

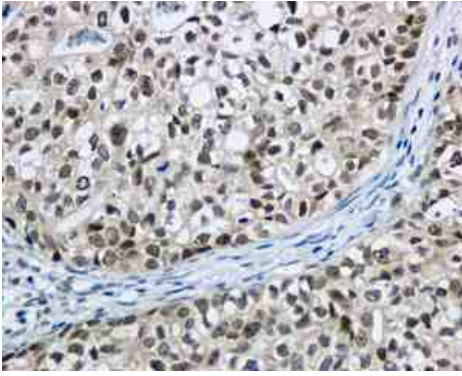
Anti-Apc6 antibody [EPR11168] ([ab169536](#)) at 1/1000 dilution + immunoprecipitation pellet from HepG2 cell lysate

#### Secondary

HRP-conjugated anti-rabbit IgG preferentially detecting the non-reduced form of rabbit IgG

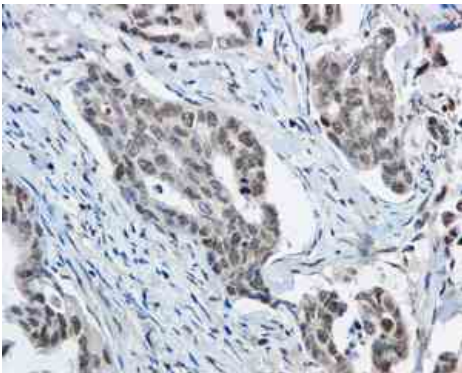
**Predicted band size:** 71 kDa

This data was developed using [ab169536](#), the same antibody clone in a different buffer formulation.



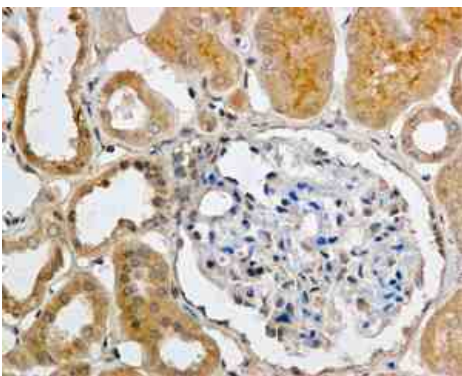
Immunohistochemistry (Formalin/PFA-fixed paraffin-embedded sections) - Anti-Apc6 antibody  
[EPR11168] - BSA and Azide free (ab249488)

This data was developed using [ab169536](#), the same antibody clone in a different buffer formulation. Immunohistochemical analysis of paraffin-embedded Human breast carcinoma tissue labeling Apc6 with [ab169536](#) at 1/50 dilution. Perform heat mediated antigen retrieval with citrate buffer pH 6 before commencing with IHC staining protocol.



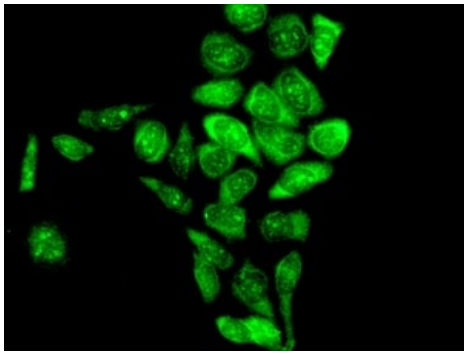
Immunohistochemistry (Formalin/PFA-fixed paraffin-embedded sections) - Anti-Apc6 antibody  
[EPR11168] - BSA and Azide free (ab249488)

This data was developed using [ab169536](#), the same antibody clone in a different buffer formulation. Immunohistochemical analysis of paraffin-embedded Human gastric carcinoma tissue labeling Apc6 with [ab169536](#) at 1/50 dilution. Perform heat mediated antigen retrieval with citrate buffer pH 6 before commencing with IHC staining protocol.



Immunohistochemistry (Formalin/PFA-fixed paraffin-embedded sections) - Anti-Apc6 antibody  
[EPR11168] - BSA and Azide free (ab249488)

This data was developed using [ab169536](#), the same antibody clone in a different buffer formulation. Immunohistochemical analysis of paraffin-embedded Human kidney tissue labeling Apc6 with [ab169536](#) at 1/50 dilution. Perform heat mediated antigen retrieval with citrate buffer pH 6 before commencing with IHC staining protocol.



Immunocytochemistry/ Immunofluorescence - Anti-Apc6 antibody [EPR11168] - BSA and Azide free (ab249488)

This data was developed using **ab169536**, the same antibody clone in a different buffer formulation. Immunofluorescent analysis of HeLa cells labeling Apc6 with **ab169536** at 1/100 dilution.

#### Why choose a recombinant antibody?



**Research with confidence**  
Consistent and reproducible results



**Long-term and scalable supply**  
Recombinant technology



**Success from the first experiment**  
Confirmed specificity



**Ethical standards compliant**  
Animal-free production

Anti-Apc6 antibody [EPR11168] - BSA and Azide free (ab249488)

**Please note:** All products are "FOR RESEARCH USE ONLY. NOT FOR USE IN DIAGNOSTIC PROCEDURES"

#### Our Abpromise to you: Quality guaranteed and expert technical support

- Replacement or refund for products not performing as stated on the datasheet
- Valid for 12 months from date of delivery
- Response to your inquiry within 24 hours
- We provide support in Chinese, English, French, German, Japanese and Spanish
- Extensive multi-media technical resources to help you
- We investigate all quality concerns to ensure our products perform to the highest standards

If the product does not perform as described on this datasheet, we will offer a refund or replacement. For full details of the Abpromise, please visit <https://www.abcam.com/abpromise> or contact our technical team.

## **Terms and conditions**

---

- Guarantee only valid for products bought direct from Abcam or one of our authorized distributors