

Product datasheet

APC/Cy7® Anti-IL-2 Receptor alpha antibody [MEM-181] ab239307

[1 Image](#)

Overview

Product name	APC/Cy7® Anti-IL-2 Receptor alpha antibody [MEM-181]
Description	APC/Cy7® Mouse monoclonal [MEM-181] to IL-2 Receptor alpha
Host species	Mouse
Conjugation	APC/Cy7®. Ex: 650nm, Em: 774nm
Tested applications	Suitable for: Flow Cyt
Species reactivity	Reacts with: Human
Immunogen	Tissue, cells or virus corresponding to Human IL-2 Receptor alpha. (PHA-activated peripheral blood leucocytes).
Positive control	Flow Cyt: PHA-stimulated (3 days) human PBMC.
General notes	This product or portions thereof is manufactured under license from Carnegie Mellon University under U.S. Patent Number 5, 268, 486 and related patents. Cy® and CyDye® are trademarks of Cytiva.

The Life Science industry has been in the grips of a reproducibility crisis for a number of years. Abcam is leading the way in addressing this with our range of recombinant monoclonal antibodies and knockout edited cell lines for gold-standard validation. Please check that this product meets your needs before purchasing.

If you have any questions, special requirements or concerns, please send us an inquiry and/or contact our Support team ahead of purchase. Recommended alternatives for this product can be found below, along with publications, customer reviews and Q&As

Properties

Form	Liquid
Storage instructions	Shipped at 4°C. Store at +4°C. Store In the Dark.
Storage buffer	pH: 7.4 Preservative: 0.0975% Sodium azide Constituent: PBS
Purity	Size exclusion
Purification notes	The purified antibody is conjugated with tandem dye APC-Cy™7 under optimum conditions. The

conjugate is purified by size-exclusion chromatography and adjusted for direct use.

Clonality	Monoclonal
Clone number	MEM-181
Isotype	IgG1

Applications

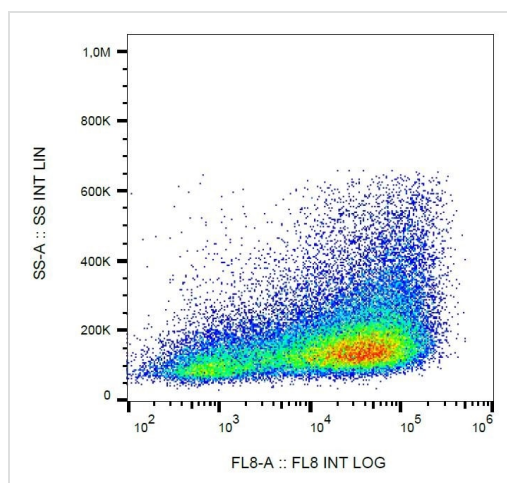
The Abpromise guarantee Our **Abpromise guarantee** covers the use of ab239307 in the following tested applications. The application notes include recommended starting dilutions; optimal dilutions/concentrations should be determined by the end user.

Application	Abreviews	Notes
Flow Cyt		Use 10µl for 10 ⁶ cells. (or 100 µl of whole blood).

Target

Function	Receptor for interleukin-2.
Involvement in disease	Genetic variations in IL2RA are associated with susceptibility to diabetes mellitus insulin-dependent type 10 (IDDM10) [MIM:601942]. A multifactorial disorder of glucose homeostasis that is characterized by susceptibility to ketoacidosis in the absence of insulin therapy. Clinical features are polydipsia, polyphagia and polyuria which result from hyperglycemia-induced osmotic diuresis and secondary thirst. These derangements result in long-term complications that affect the eyes, kidneys, nerves, and blood vessels.
Sequence similarities	Contains 2 Sushi (CCP/SCR) domains.
Cellular localization	Membrane.

Images



Flow cytometric analysis of PHA-stimulated (3 days) human PBMC labeling IL-2 Receptor alpha with ab239307. Surface staining.

Flow Cytometry - APC/Cy7® Anti-IL-2 Receptor alpha antibody [MEM-181] (ab239307)

Please note: All products are "FOR RESEARCH USE ONLY. NOT FOR USE IN DIAGNOSTIC PROCEDURES"

Our Abpromise to you: Quality guaranteed and expert technical support

- Replacement or refund for products not performing as stated on the datasheet
- Valid for 12 months from date of delivery
- Response to your inquiry within 24 hours

- We provide support in Chinese, English, French, German, Japanese and Spanish
- Extensive multi-media technical resources to help you
- We investigate all quality concerns to ensure our products perform to the highest standards

If the product does not perform as described on this datasheet, we will offer a refund or replacement. For full details of the Abpromise, please visit <https://www.abcam.com/abpromise> or contact our technical team.

Terms and conditions

- Guarantee only valid for products bought direct from Abcam or one of our authorized distributors