

Product datasheet

Anti-Apelin antibody [EPNCIR154] α b133624

Recombinant RabMAb

2 Images

Overview

Product name Anti-Apelin antibody [EPNCIR154]

Description Rabbit monoclonal [EPNCIR154] to Apelin

① This product is a **fast track antibody**. It has been affinity purified and shows high titre values against the immunizing peptide by ELISA.

[Read the terms of use »](#)

Host species Rabbit

Species reactivity **Reacts with:** Human

Immunogen Synthetic peptide. This information is proprietary to Abcam and/or its suppliers.

General notes This antibody was developed as part of a collaboration between Epitomics, the National Cancer Institute's Center for Cancer Research and the lab of David Solomon. [View antibodies from NCI Center for Cancer Research Collaboration.](#)

This product is a recombinant monoclonal antibody, which offers several advantages including:

- High batch-to-batch consistency and reproducibility
- Improved sensitivity and specificity
- Long-term security of supply
- Animal-free production

For more information [see here](#).

Our RabMAb[®] technology is a patented hybridoma-based technology for making rabbit monoclonal antibodies. For details on our patents, please refer to [RabMAb[®] patents](#).

Properties

Form Liquid

Storage instructions Shipped at 4°C. Store at -20°C. Stable for 12 months at -20°C.

Storage buffer pH: 7.20

Preservative: 0.01% Sodium azide

Constituents: 9% PBS, 40% Glycerol (glycerin, glycerine), 0.05% BSA, 50% Tissue culture supernatant

Purity Protein A purified

Clonality	Monoclonal
Clone number	EPNCIR154
Isotype	IgG

Applications

Fast track antibodies constitute a diverse group of products that have been released to accelerate your research, but are not yet fully characterized. They have all been affinity purified and show high titre values against the immunizing peptide (by ELISA).

Fast track terms of use

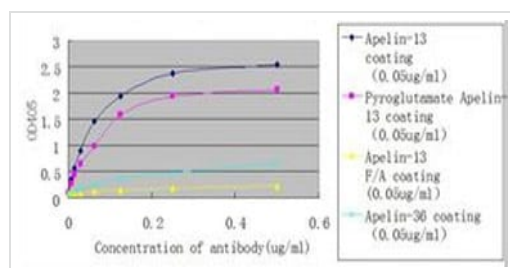
Application	Abreviews	Notes
ELISA		Use a concentration of 0.25 µg/ml.

Target

Function	Endogenous ligand for APJ, an alternative coreceptor with CD4 for HIV-1 infection. Inhibits HIV-1 entry in cells coexpressing CD4 and APJ. Apelin-36 has a greater inhibitory activity on HIV infection than other synthetic apelin derivatives. The oral intake in the colostrum and the milk could have a role in the modulation of the immune responses in neonates. May also have a role in the central control of body fluid homeostasis by influencing AVP release and drinking behavior.
Tissue specificity	Expressed in the brain with highest levels in the frontal cortex, thalamus, hypothalamus and midbrain. Secreted by the mammary gland into the colostrum and the milk.
Sequence similarities	Belongs to the apelin family.
Post-translational modifications	Several active peptides may be produced by proteolytic processing of the peptide precursor.
Cellular localization	Secreted.

Images

This Fast-Track antibody is not yet fully characterised. These images represent **inconclusive preliminary data**.



ELISA assay using ab133624 shows the relationship between concentration of antibody and optical density readings.

ELISA - Anti-Apelin antibody [EPNCIR154]
(ab133624)

Why choose a recombinant antibody?



Research with confidence
Consistent and reproducible results



Long-term and scalable supply
Recombinant technology



Success from the first experiment
Confirmed specificity



Ethical standards compliant
Animal-free production

Anti-Apelin antibody [EPNCIR154] (ab133624)

Please note: All products are "FOR RESEARCH USE ONLY. NOT FOR USE IN DIAGNOSTIC PROCEDURES"

Terms and conditions

- Guarantee only valid for products bought direct from Abcam or one of our authorized distributors