


Anti-APLP2 antibody ab137597

[4 Images](#)

Overview

Product name	Anti-APLP2 antibody
Description	Rabbit polyclonal to APLP2
Host species	Rabbit
Tested applications	Suitable for: WB, IHC-P
Species reactivity	Reacts with: Mouse, Human Predicted to work with: Chimpanzee 
Immunogen	Recombinant fragment, corresponding to a region within N terminal amino acids 17-235 of Human APLP2.
Positive control	WB: Human HEK-293T, A431, HeLa, HepG2 and A-375 cell lysates; Mouse brain lysate. IHC-P: Mouse liver and fore brain tissue.
General notes	<p>The Life Science industry has been in the grips of a reproducibility crisis for a number of years. Abcam is leading the way in addressing this with our range of recombinant monoclonal antibodies and knockout edited cell lines for gold-standard validation. Please check that this product meets your needs before purchasing.</p> <p>If you have any questions, special requirements or concerns, please send us an inquiry and/or contact our Support team ahead of purchase. Recommended alternatives for this product can be found below, along with publications, customer reviews and Q&As</p>

Properties

Form	Liquid
Storage instructions	Shipped at 4°C. Upon delivery aliquot. Store at -20°C or -80°C. Avoid freeze / thaw cycle.
Storage buffer	pH: 7.00 Preservative: 0.025% Proclin 300 Constituents: 78% PBS, 1% BSA, 20% Glycerol (glycerin, glycerine)
Purity	Immunogen affinity purified
Clonality	Polyclonal
Isotype	IgG

Applications

The Abpromise guarantee

Our **Abpromise guarantee** covers the use of ab137597 in the following tested applications.

The application notes include recommended starting dilutions; optimal dilutions/concentrations should be determined by the end user.

Application	Abreviews	Notes
WB		1/1000. Predicted molecular weight: 87 kDa.
IHC-P		1/100 - 1/1000.

Target

Function

May play a role in the regulation of hemostasis. The soluble form may have inhibitory properties towards coagulation factors. May interact with cellular G-protein signaling pathways. May bind to the DNA 5'-GTCACATG-3'(CDEI box). Inhibits trypsin, chymotrypsin, plasmin, factor XIA and plasma and glandular kallikrein.

Tissue specificity

Expressed in placenta, brain, heart, lung, liver, kidney and endothelial tissues.

Sequence similarities

Belongs to the APP family.
Contains 1 BPTI/Kunitz inhibitor domain.

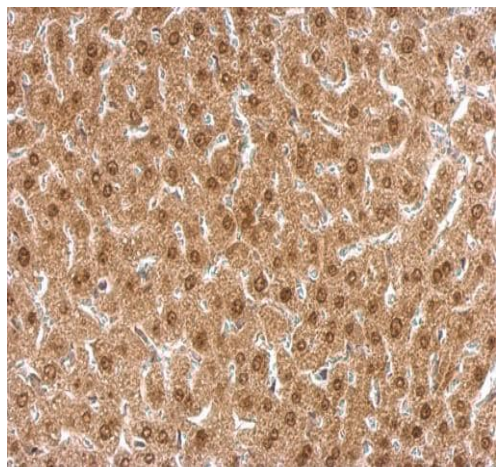
Post-translational modifications

The BPTI/Kunitz inhibitor domain is O-glycosylated.

Cellular localization

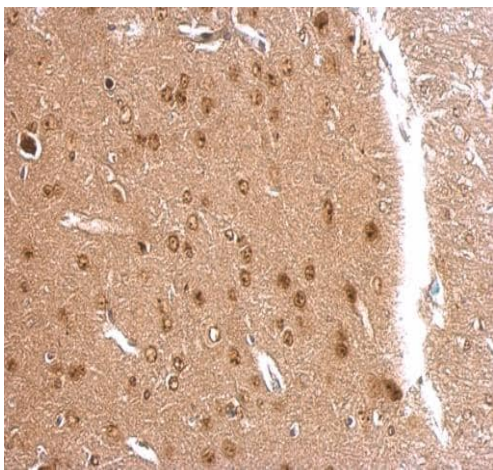
Cell membrane. Nucleus.

Images



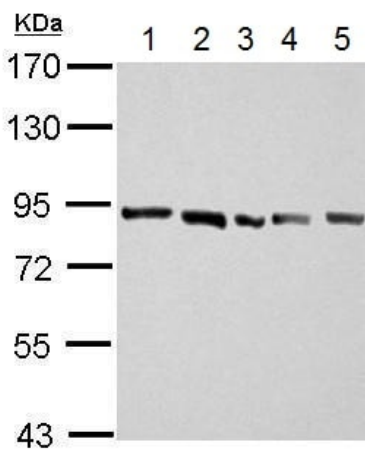
Paraffin-embedded mouse liver tissue stained for APLP2 using ab137597 at 1/500 dilution in immunohistochemical analysis.

Immunohistochemistry (Formalin/PFA-fixed paraffin-embedded sections) - Anti-APLP2 antibody (ab137597)



Immunohistochemistry (Formalin/PFA-fixed paraffin-embedded sections) - Anti-APLP2 antibody (ab137597)

Paraffin-embedded mouse fore brain tissue stained for APLP2 using ab137597 at 1/500 dilution in immunohistochemical analysis.



Western blot - Anti-APLP2 antibody (ab137597)

All lanes : Anti-APLP2 antibody (ab137597) at 1/1000 dilution

Lane 1 : HEK-293T (human epithelial cell line from embryonic kidney transformed with large T antigen) whole cell lysate

Lane 2 : A431 (human epidermoid carcinoma cell line) whole cell lysate

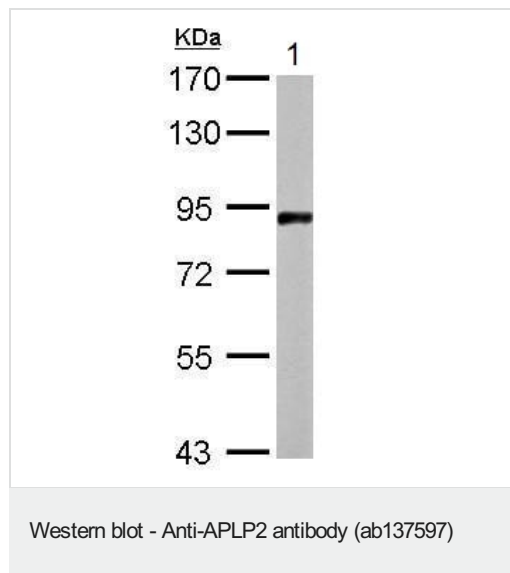
Lane 3 : HeLa (human epithelial cell line from cervix adenocarcinoma) whole cell lysate

Lane 4 : HepG2 (human liver hepatocellular carcinoma cell line) whole cell lysate

Lane 5 : A-375 (human malignant melanoma cell line) whole cell lysate

Lysates/proteins at 30 µg per lane.

Predicted band size: 87 kDa



Anti-APLP2 antibody (ab137597) at 1/1000 dilution + Mouse brain lysate at 50 µg

Predicted band size: 87 kDa

Please note: All products are "FOR RESEARCH USE ONLY. NOT FOR USE IN DIAGNOSTIC PROCEDURES"

Our Abpromise to you: Quality guaranteed and expert technical support

- Replacement or refund for products not performing as stated on the datasheet
- Valid for 12 months from date of delivery
- Response to your inquiry within 24 hours
- We provide support in Chinese, English, French, German, Japanese and Spanish
- Extensive multi-media technical resources to help you
- We investigate all quality concerns to ensure our products perform to the highest standards

If the product does not perform as described on this datasheet, we will offer a refund or replacement. For full details of the Abpromise, please visit <https://www.abcam.com/abpromise> or contact our technical team.

Terms and conditions

- Guarantee only valid for products bought direct from Abcam or one of our authorized distributors