

# Anti-APOBEC3C/PBI antibody - C-terminal ab199173

1 Image

### Overview

<b>Product name</b>	Anti-APOBEC3C/PBI antibody - C-terminal
<b>Description</b>	Rabbit polyclonal to APOBEC3C/PBI - C-terminal
<b>Host species</b>	Rabbit
<b>Tested applications</b>	<b>Suitable for:</b> WB
<b>Species reactivity</b>	<b>Reacts with:</b> Human
<b>Immunogen</b>	Synthetic peptide corresponding to Human APOBEC3C/PBI (C terminal). NP_055323. Database link: <a href="#">Q9NRW3</a>
<b>Positive control</b>	PC3 cell lysate.
<b>General notes</b>	<p>The Life Science industry has been in the grips of a reproducibility crisis for a number of years. Abcam is leading the way in addressing this with our range of recombinant monoclonal antibodies and knockout edited cell lines for gold-standard validation. Please check that this product meets your needs before purchasing.</p> <p>If you have any questions, special requirements or concerns, please send us an inquiry and/or contact our Support team ahead of purchase. Recommended alternatives for this product can be found below, along with publications, customer reviews and Q&amp;As</p>

### Properties

<b>Form</b>	Liquid
<b>Storage instructions</b>	Shipped at 4°C. Store at +4°C short term (1-2 weeks). Upon delivery aliquot. Store at -20°C long term. Avoid freeze / thaw cycle.
<b>Storage buffer</b>	pH: 7.4 Preservative: 0.05% Sodium azide Constituents: 49% PBS, 50% Glycerol (glycerin, glycerine)
<b>Purity</b>	Immunogen affinity purified
<b>Clonality</b>	Polyclonal
<b>Isotype</b>	IgG

### Applications

## The Abpromise guarantee

Our **Abpromise guarantee** covers the use of ab199173 in the following tested applications.

The application notes include recommended starting dilutions; optimal dilutions/concentrations should be determined by the end user.

Application	Abreviews	Notes
WB		1/200 - 1/1000. Predicted molecular weight: 23 kDa.

## Target

### Function

Host cellular restriction factor that may have antiviral activities against exogenous and endogenous viruses, as well as retrotransposons. May also play a role in the epigenetic regulation of gene expression through the process of active DNA demethylation.

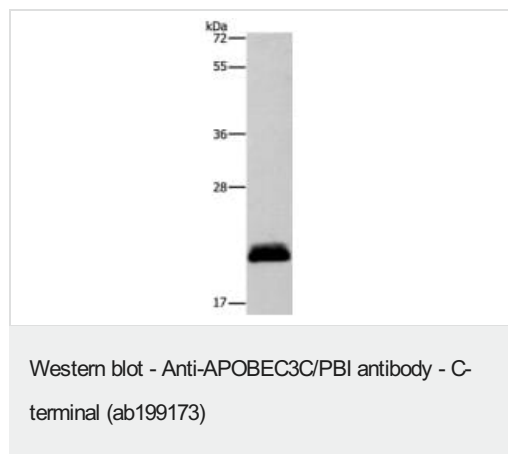
### Tissue specificity

Expressed in spleen, testes, peripheral blood lymphocytes, heart, thymus, prostate and ovary.

### Sequence similarities

Belongs to the cytidine and deoxycytidylate deaminase family.

## Images



Anti-APOBEC3C/PBI antibody - C-terminal (ab199173) at 1/350 dilution + PC3 cell lysate at 40 µg

Developed using the ECL technique.

**Predicted band size:** 23 kDa

**Exposure time:** 1 minute

Gel: 12% SDS-PAGE

**Please note:** All products are "FOR RESEARCH USE ONLY. NOT FOR USE IN DIAGNOSTIC PROCEDURES"

## Our Abpromise to you: Quality guaranteed and expert technical support

- Replacement or refund for products not performing as stated on the datasheet
- Valid for 12 months from date of delivery
- Response to your inquiry within 24 hours
- We provide support in Chinese, English, French, German, Japanese and Spanish
- Extensive multi-media technical resources to help you
- We investigate all quality concerns to ensure our products perform to the highest standards

If the product does not perform as described on this datasheet, we will offer a refund or replacement. For full details of the Abpromise, please visit <https://www.abcam.com/abpromise> or contact our technical team.

## Terms and conditions

---

- Guarantee only valid for products bought direct from Abcam or one of our authorized distributors