

# Anti-APOL2 antibody ab196771

[1 References](#) [3 Images](#)

### Overview

<b>Product name</b>	Anti-APOL2 antibody
<b>Description</b>	Rabbit polyclonal to APOL2
<b>Host species</b>	Rabbit
<b>Tested applications</b>	<b>Suitable for:</b> IHC-P, WB, ICC/IF
<b>Species reactivity</b>	<b>Reacts with:</b> Human
<b>Immunogen</b>	Synthetic peptide corresponding to Human APOL2 (internal sequence). Database link: <a href="#">Q9BQE5</a>
<b>Positive control</b>	WB: Extracts from COLO cells and HUVEC cells. ICC/IF: MCF7 cells. IHC-P: Human cervix carcinoma tissue.
<b>General notes</b>	<p>The Life Science industry has been in the grips of a reproducibility crisis for a number of years. Abcam is leading the way in addressing this with our range of recombinant monoclonal antibodies and knockout edited cell lines for gold-standard validation. Please check that this product meets your needs before purchasing.</p> <p>If you have any questions, special requirements or concerns, please send us an inquiry and/or contact our Support team ahead of purchase. Recommended alternatives for this product can be found below, along with publications, customer reviews and Q&amp;As</p>

### Properties

<b>Form</b>	Liquid
<b>Storage instructions</b>	Shipped at 4°C. Store at +4°C short term (1-2 weeks). Upon delivery aliquot. Store at -20°C long term. Avoid freeze / thaw cycle.
<b>Storage buffer</b>	<p>pH: 7.40</p> <p>Preservative: 0.02% Sodium azide</p> <p>Constituents: 50% Glycerol (glycerin, glycerine), 0.87% Sodium chloride, 49% PBS</p> <p>PBS without Mg<sup>2+</sup> and Ca<sup>2+</sup></p>
<b>Purity</b>	Immunogen affinity purified
<b>Clonality</b>	Polyclonal
<b>Isotype</b>	IgG

## Applications

### The Abpromise guarantee

Our **Abpromise guarantee** covers the use of ab196771 in the following tested applications.

The application notes include recommended starting dilutions; optimal dilutions/concentrations should be determined by the end user.

Application	Abreviews	Notes
IHC-P		1/50 - 1/100.
WB		1/500 - 1/3000. Predicted molecular weight: 37 kDa.
ICC/IF		1/100 - 1/500.

## Target

### Function

May affect the movement of lipids in the cytoplasm or allow the binding of lipids to organelles.

### Tissue specificity

Widely expressed; the highest levels are found in lung, thymus, pancreas, placenta, adult brain and prostate; also detected in spleen, liver, kidney, colon, small intestine, uterus, spinal cord, adrenal gland, salivary gland, trachea, mammary gland, skeletal muscle, testis and fetal brain and liver.

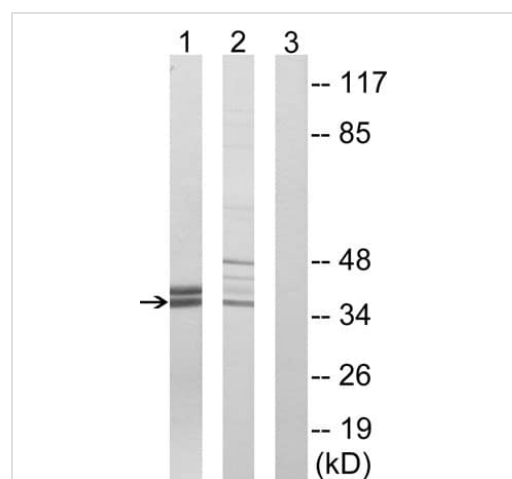
### Sequence similarities

Belongs to the apolipoprotein L family.

### Cellular localization

Cytoplasm.

## Images



Western blot - Anti-APOL2 antibody (ab196771)

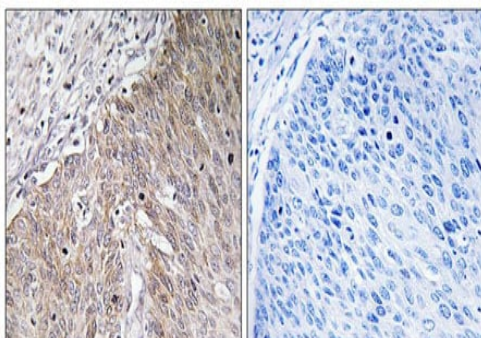
**All lanes :** Anti-APOL2 antibody (ab196771) at 1/500 dilution

**Lane 1 :** COLO cell extracts

**Lane 2 :** HUVEC cell extracts

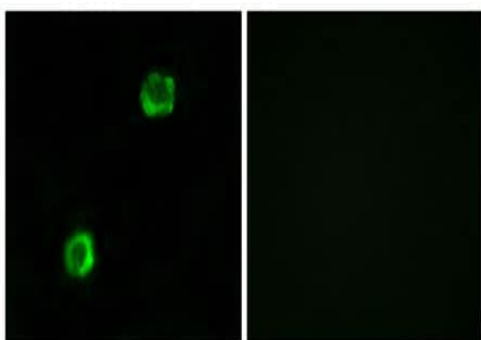
**Lane 3 :** HUVEC cell extracts with synthesized peptide

**Predicted band size:** 37 kDa



Immunohistochemistry (Formalin/PFA-fixed paraffin-embedded sections) - Anti-APOL2 antibody (ab196771)

Immunohistochemical analysis of paraffin-embedded Human cervix carcinoma tissue labeling APOL2 with ab196771 at 1/50 dilution. The image on the right is treated with the synthesized peptide.



Immunocytochemistry/ Immunofluorescence - Anti-APOL2 antibody (ab196771)

Immunofluorescent analysis of MCF7 cells labeling APOL2 with ab196771 at 1/100 dilution. The image on the right is treated with the synthesized peptide.

**Please note:** All products are "FOR RESEARCH USE ONLY. NOT FOR USE IN DIAGNOSTIC PROCEDURES"

### Our Abpromise to you: Quality guaranteed and expert technical support

- Replacement or refund for products not performing as stated on the datasheet
- Valid for 12 months from date of delivery
- Response to your inquiry within 24 hours
- We provide support in Chinese, English, French, German, Japanese and Spanish
- Extensive multi-media technical resources to help you
- We investigate all quality concerns to ensure our products perform to the highest standards

If the product does not perform as described on this datasheet, we will offer a refund or replacement. For full details of the Abpromise, please visit <https://www.abcam.com/abpromise> or contact our technical team.

## Terms and conditions

---

- Guarantee only valid for products bought direct from Abcam or one of our authorized distributors