


## Product datasheet

### Anti-APOL3 antibody [EPR8238(2)] ab154869

Recombinant RabMAb

4 Images

#### Overview

|                     |   |
|---------------------|---|
| Product name        | Anti-APOL3 antibody [EPR8238(2)]  |
| Description         | Rabbit monoclonal [EPR8238(2)] to APOL3   |
| Host species        | Rabbit  |
| Tested applications | <b>Suitable for:</b> WB, IHC-P<br><b>Unsuitable for:</b> ICC/IF or IP   |
| Species reactivity  | <b>Reacts with:</b> Human<br><b>Predicted to work with:</b> Mouse, Rat   |
| Immunogen           | Synthetic peptide. This information is proprietary to Abcam and/or its suppliers.   |
| Positive control    | Fetal kidney, Jurkat and Daudi lysates; Human colon and kidney tissues.   |
| General notes       | <p>This product is a recombinant monoclonal antibody, which offers several advantages including:</p> <ul style="list-style-type: none"> <li>- High batch-to-batch consistency and reproducibility</li> <li>- Improved sensitivity and specificity</li> <li>- Long-term security of supply</li> <li>- Animal-free production</li> </ul> <p>For more information <a href="#">see here</a>.</p> <p>Our RabMAb<sup>®</sup> technology is a patented hybridoma-based technology for making rabbit monoclonal antibodies. For details on our patents, please refer to <a href="#">RabMAb<sup>®</sup> patents</a>.</p> |

#### Properties

|                      |  |
|----------------------|--|
| Form                 | Liquid   |
| Storage instructions | Shipped at 4°C. Store at -20°C.  |
| Storage buffer       | pH: 7.2<br>Preservative: 0.01% Sodium azide<br>Constituents: 59% PBS, 40% Glycerol (glycerin, glycerine), 0.5% BSA |
| Purity               | Protein A purified   |
| Clonality            | Monoclonal   |
| Clone number         | EPR8238(2)   |
| Isotype              | IgG  |

## Applications

### The Abpromise guarantee

Our **Abpromise guarantee** covers the use of ab154869 in the following tested applications.

The application notes include recommended starting dilutions; optimal dilutions/concentrations should be determined by the end user.

| Application | Abreviews | Notes   |
|-------------|-----------|---|
| WB          |           | 1/1000 - 1/10000. Predicted molecular weight: 44 kDa.   |
| IHC-P       |           | 1/100 - 1/250. Perform heat mediated antigen retrieval with citrate buffer pH 6 before commencing with IHC staining protocol. |

### Application notes

Is unsuitable for ICC/IF or IP.

## Target

### Function

May affect the movement of lipids in the cytoplasm or allow the binding of lipids to organelles.

### Tissue specificity

Widely expressed; the highest levels are in prostate, lung and placenta; also detected in kidney, bone marrow, spleen, thymus, spinal cord, adrenal gland, salivary gland, trachea and mammary gland; levels are low in brain, heart, fetal liver, pancreas and testis.

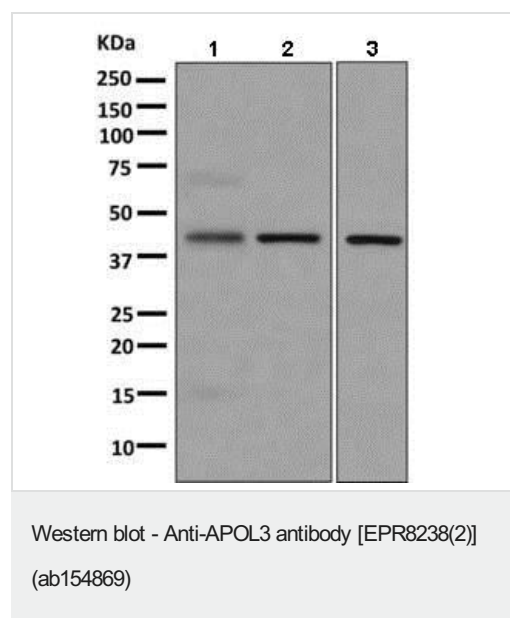
### Sequence similarities

Belongs to the apolipoprotein L family.

### Cellular localization

Cytoplasm.

## Images



**All lanes :** Anti-APOL3 antibody [EPR8238(2)] (ab154869) at 1/1000 dilution

**Lane 1 :** Fetal kidney tissue lysate

**Lane 2 :** Jurkat cell lysate

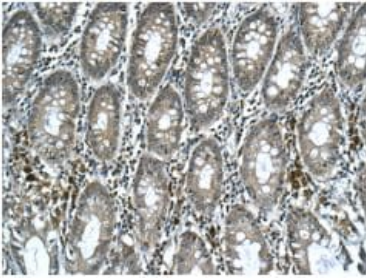
**Lane 3 :** Daudi cell lysate

Lysates/proteins at 10 µg per lane.

### Secondary

**All lanes :** Goat anti-rabbit HRP at 1/2000 dilution

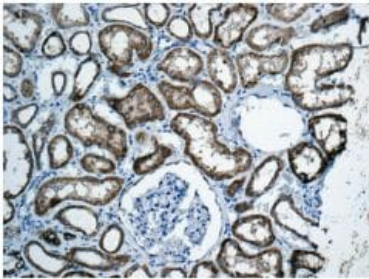
**Predicted band size:** 44 kDa



Immunohistochemistry (Formalin/PFA-fixed paraffin-embedded sections) - Anti-APOL3 antibody [EPR8238(2)] (ab154869)

Immunohistochemical analysis of paraffin-embedded Human colon tissue labeling APOL3 with ab154869 at 1/100 dilution.

Perform heat mediated antigen retrieval with citrate buffer pH 6 before commencing with IHC staining protocol.



Immunohistochemistry (Formalin/PFA-fixed paraffin-embedded sections) - Anti-APOL3 antibody [EPR8238(2)] (ab154869)

Immunohistochemical analysis of paraffin-embedded Human kidney tissue labeling APOL3 with ab154869 at 1/100 dilution.

Perform heat mediated antigen retrieval with citrate buffer pH 6 before commencing with IHC staining protocol.

### Why choose a recombinant antibody?



**Research with confidence**  
Consistent and reproducible results



**Long-term and scalable supply**  
Recombinant technology



**Success from the first experiment**  
Confirmed specificity



**Ethical standards compliant**  
Animal-free production

Anti-APOL3 antibody [EPR8238(2)] (ab154869)

**Please note:** All products are "FOR RESEARCH USE ONLY. NOT FOR USE IN DIAGNOSTIC PROCEDURES"

## **Our Abpromise to you: Quality guaranteed and expert technical support**

---

- Replacement or refund for products not performing as stated on the datasheet
- Valid for 12 months from date of delivery
- Response to your inquiry within 24 hours
  
- We provide support in Chinese, English, French, German, Japanese and Spanish
- Extensive multi-media technical resources to help you
- We investigate all quality concerns to ensure our products perform to the highest standards

If the product does not perform as described on this datasheet, we will offer a refund or replacement. For full details of the Abpromise, please visit [\*\*https://www.abcam.com/abpromise\*\*](https://www.abcam.com/abpromise) or contact our technical team.

## **Terms and conditions**

---

- Guarantee only valid for products bought direct from Abcam or one of our authorized distributors