

Product datasheet

Anti-Apolipoprotein L1/APOL1 antibody ab231523

[1 References](#) [3 Images](#)

Overview

| | |
|----------------------------|---|
| Product name | Anti-Apolipoprotein L1/APOL1 antibody |
| Description | Rabbit polyclonal to Apolipoprotein L1/APOL1 |
| Host species | Rabbit |
| Tested applications | Suitable for: IHC-P, WB |
| Species reactivity | Reacts with: Human |
| Immunogen | Recombinant fragment corresponding to Human Apolipoprotein L1/APOL1 aa 1-250. N-terminal His-tag and GST-tag. Expressed in E.coli. Database link: O14791 |

 [Run BLAST with](#)

 [Run BLAST with](#)

| | |
|-------------------------|--|
| Positive control | IHC-P: Human kidney tissue. WB: MCF7 cell lysate; Recombinant human Apolipoprotein L1/APOL1 protein. |
|-------------------------|--|

| | |
|----------------------|---|
| General notes | <p>The Life Science industry has been in the grips of a reproducibility crisis for a number of years. Abcam is leading the way in addressing this with our range of recombinant monoclonal antibodies and knockout edited cell lines for gold-standard validation. Please check that this product meets your needs before purchasing.</p> <p>If you have any questions, special requirements or concerns, please send us an inquiry and/or contact our Support team ahead of purchase. Recommended alternatives for this product can be found below, along with publications, customer reviews and Q&As</p> |
|----------------------|---|

Properties

| | |
|-----------------------------|---|
| Form | Liquid |
| Storage instructions | Shipped at 4°C. Store at +4°C short term (1-2 weeks). Upon delivery aliquot. Store at -20°C long term. Avoid freeze / thaw cycle. |
| Storage buffer | pH: 7.40 Preservative: 0.011% Proclin 300 Constituents: 55.77% Glycerol (glycerin, glycerine), 44.219% PBS |
| Purity | Immunogen affinity purified |
| Purification notes | ab231523 was purified by antigen-specific affinity chromatography followed by Protein A affinity chromatography. |
| Clonality | Polyclonal |

Isotype

IgG

Applications

The Abpromise guarantee

Our **Abpromise guarantee** covers the use of ab231523 in the following tested applications.

The application notes include recommended starting dilutions; optimal dilutions/concentrations should be determined by the end user.

| Application | Abreviews | Notes |
|-------------|-----------|---|
| IHC-P | | Use a concentration of 5 - 20 µg/ml. |
| WB | | Use a concentration of 1 - 5 µg/ml. Predicted molecular weight: 44 kDa. |

Target

Function

May play a role in lipid exchange and transport throughout the body. May participate in reverse cholesterol transport from peripheral cells to the liver.

Tissue specificity

Plasma. Found on APOA-I-containing high density lipoprotein (HDL3). Expressed in pancreas, lung, prostate, liver, placenta and spleen.

Involvement in disease

Defects in APOL1 are the cause of focal segmental glomerulosclerosis type 4 (FSGS4) [MIM:612551]. It is a renal pathology defined by the presence of segmental sclerosis in glomeruli and resulting in proteinuria, reduced glomerular filtration rate and edema. Renal insufficiency often progresses to end-stage renal disease, a highly morbid state requiring either dialysis therapy or kidney transplantation.

Sequence similarities

Belongs to the apolipoprotein L family.

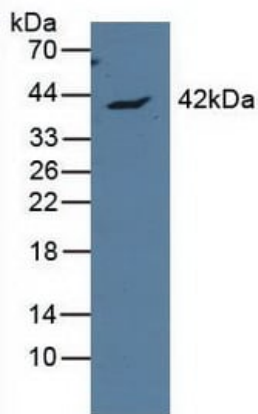
Post-translational modifications

Phosphorylation sites are present in the extracellular medium.

Cellular localization

Secreted.

Images



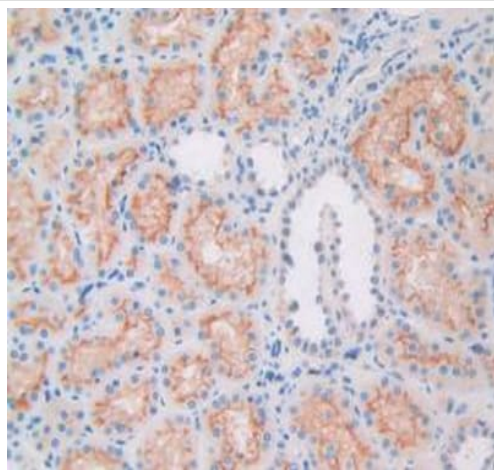
Western blot - Anti-Apolipoprotein L1/APOL1 antibody (ab231523)

Anti-Apolipoprotein L1/APOL1 antibody (ab231523) at 3 µg/ml + MCF7 (human breast adenocarcinoma cell line) cell lysate

Secondary

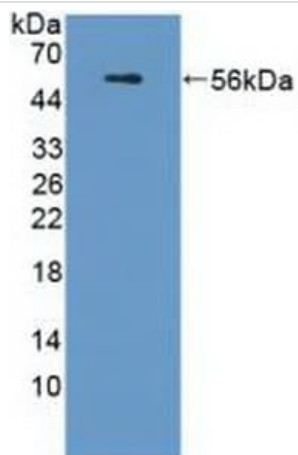
HRP-linked Guinea pig anti-Rabbit at 1/2000 dilution

Predicted band size: 44 kDa



Immunohistochemistry (Formalin/PFA-fixed paraffin-embedded sections) - Anti-Apolipoprotein L1/APOL1 antibody (ab231523)

Paraffin-embedded human kidney tissue stained for Apolipoprotein L1/APOL1 using ab231523 at 20 µg/ml in immunohistochemical analysis. DAB staining.



Western blot - Anti-Apolipoprotein L1/APOL1 antibody (ab231523)

Anti-Apolipoprotein L1/APOL1 antibody (ab231523) at 5 µg/ml + Recombinant human Apolipoprotein L1/APOL1 protein

Predicted band size: 44 kDa

Please note: All products are "FOR RESEARCH USE ONLY. NOT FOR USE IN DIAGNOSTIC PROCEDURES"

Our Abpromise to you: Quality guaranteed and expert technical support

- Replacement or refund for products not performing as stated on the datasheet
- Valid for 12 months from date of delivery
- Response to your inquiry within 24 hours
- We provide support in Chinese, English, French, German, Japanese and Spanish
- Extensive multi-media technical resources to help you
- We investigate all quality concerns to ensure our products perform to the highest standards

If the product does not perform as described on this datasheet, we will offer a refund or replacement. For full details of the Abpromise, please visit <https://www.abcam.com/abpromise> or contact our technical team.

Terms and conditions

- Guarantee only valid for products bought direct from Abcam or one of our authorized distributors