

### Anti-APP-1 antibody ab241592

[6 References](#) [3 Images](#)

#### Overview

<b>Product name</b>	Anti-APP-1 antibody
<b>Description</b>	Rabbit polyclonal to APP-1
<b>Host species</b>	Rabbit
<b>Tested applications</b>	<b>Suitable for:</b> IP, IHC-P, WB
<b>Species reactivity</b>	<b>Reacts with:</b> Mouse, Human
<b>Immunogen</b>	Synthetic peptide within Human APP-1 aa 594-644. The exact sequence is proprietary. NP_003810.1 Database link: <a href="#">Q13310</a>
<b>Positive control</b>	WB: HeLa, HEK-293T and Jurkat whole cell lysate. IP: APP-1 IP in HeLa whole cell lysate. IHC-P: Human colon carcinoma tissue.
<b>General notes</b>	<p>The Life Science industry has been in the grips of a reproducibility crisis for a number of years. Abcam is leading the way in addressing this with our range of recombinant monoclonal antibodies and knockout edited cell lines for gold-standard validation. Please check that this product meets your needs before purchasing.</p> <p>If you have any questions, special requirements or concerns, please send us an inquiry and/or contact our Support team ahead of purchase. Recommended alternatives for this product can be found below, along with publications, customer reviews and Q&amp;As</p>

#### Properties

<b>Form</b>	Liquid
<b>Storage instructions</b>	Shipped at 4°C. Store at +4°C short term (1-2 weeks). Upon delivery aliquot. Store at -20°C long term. Avoid freeze / thaw cycle.
<b>Storage buffer</b>	pH: 6.8 Preservative: 0.09% Sodium azide Constituents: Tris buffered saline, 0.1% BSA
<b>Purity</b>	Immunogen affinity purified
<b>Purification notes</b>	Antibody was affinity purified using an epitope specific to APP-1 immobilized on solid support.
<b>Clonality</b>	Polyclonal
<b>Isotype</b>	IgG

## Applications

### The Abpromise guarantee

Our **Abpromise guarantee** covers the use of ab241592 in the following tested applications.

The application notes include recommended starting dilutions; optimal dilutions/concentrations should be determined by the end user.

Application	Abreviews	Notes
IP		Use at 2-5 µg/mg of lysate.
IHC-P		1/100 - 1/500. Epitope retrieval with citrate buffer pH 6.0 is recommended for FFPE tissue sections
WB		1/2000 - 1/10000.

## Target

### Function

Binds the poly(A) tail of mRNA. May be involved in cytoplasmic regulatory processes of mRNA metabolism. Can probably bind to cytoplasmic RNA sequences other than poly(A) in vivo.

### Tissue specificity

Expressed at low levels in resting normal T cells; following T-cell activation, however, mRNA levels are rapidly up-regulated.

### Sequence similarities

Belongs to the polyadenylate-binding protein type-1 family.  
Contains 1 PABC domain.  
Contains 4 RRM (RNA recognition motif) domains.

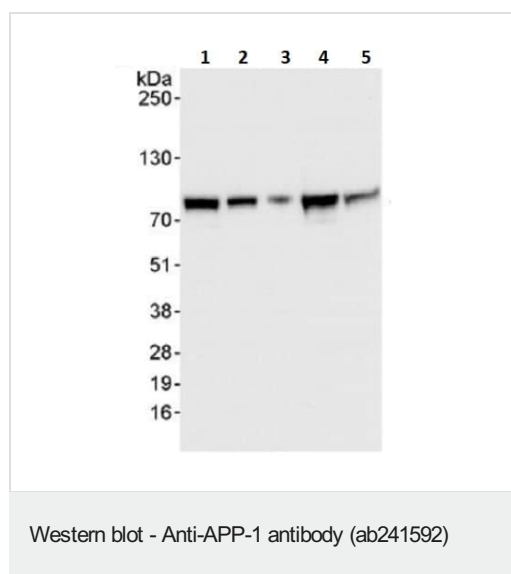
### Post-translational modifications

Arg-518 is dimethylated, probably to asymmetric dimethylarginine.

### Cellular localization

Cytoplasm. Localized in cytoplasmic mRNP granules containing untranslated mRNAs.

## Images



**All lanes :** Anti-APP-1 antibody (ab241592) at 0.04 µg/ml

**Lane 1 :** HeLa (human epithelial cell line from cervix adenocarcinoma) whole cell lysate at 50 µg

**Lane 2 :** HeLa (human epithelial cell line from cervix adenocarcinoma) whole cell lysate at 15 µg

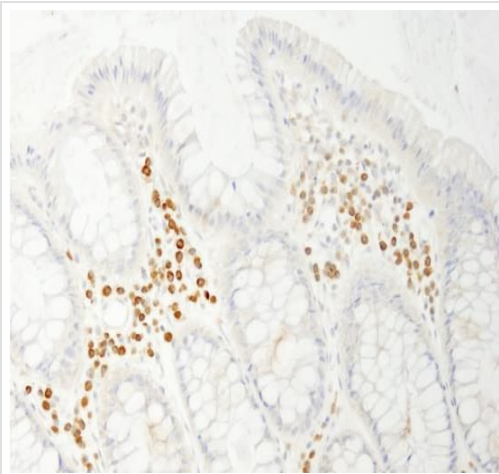
**Lane 3 :** HeLa (human epithelial cell line from cervix adenocarcinoma) whole cell lysate at 5 µg

**Lane 4 :** HEK-293T (human epithelial cell line from embryonic kidney transformed with large T antigen at 50 µg

**Lane 5 :** NIH/3T3 (mouse embryo fibroblast cell line) whole cell lysate at 50 µg

Developed using the ECL technique.

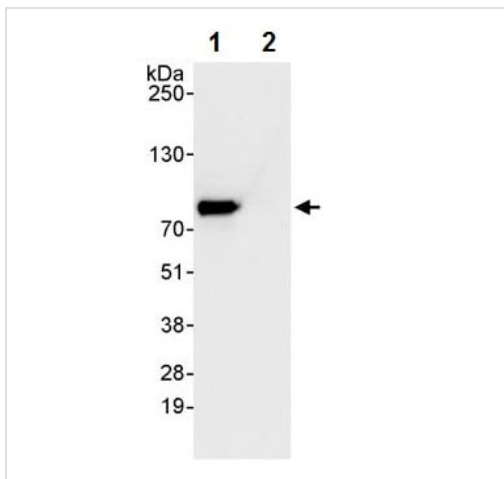
**Exposure time:** 3 seconds



Immunohistochemistry (Formalin/PFA-fixed paraffin-embedded sections) - Anti-APP-1 antibody (ab241592)

Formalin-fixed, paraffin-embedded human colon carcinoma tissue stained for APP-1 using ab241592 at 1/200 dilution in immunohistochemical analysis.

**Detection:** DAB.



Immunoprecipitation - Anti-APP-1 antibody (ab241592)

APP-1 was immunoprecipitated from HeLa (human epithelial cell line from cervix adenocarcinoma) whole cell lysate (mg for IP, 20% of IP loaded) using ab241592 at 3 µg/mg lysate. Western blot was performed on the immunoprecipitate using ab241592 at 1 µg/mL.

**Lane 1:** ab241592 IP in HeLa whole cell lysate.

**Lane 2:** Control IgG IP in HeLa whole cell lysate.

Detection: Chemiluminescence with an exposure time of 1 second.

**Please note:** All products are "FOR RESEARCH USE ONLY. NOT FOR USE IN DIAGNOSTIC PROCEDURES"

#### Our Abpromise to you: Quality guaranteed and expert technical support

- Replacement or refund for products not performing as stated on the datasheet
- Valid for 12 months from date of delivery
- Response to your inquiry within 24 hours
- We provide support in Chinese, English, French, German, Japanese and Spanish
- Extensive multi-media technical resources to help you
- We investigate all quality concerns to ensure our products perform to the highest standards

If the product does not perform as described on this datasheet, we will offer a refund or replacement. For full details of the Abpromise, please visit <https://www.abcam.com/abpromise> or contact our technical team.

#### **Terms and conditions**

---

- Guarantee only valid for products bought direct from Abcam or one of our authorized distributors