



Product datasheet

Anti-APX2 antibody ab222414

[1 References](#) [1 Image](#)

Overview

Product name	Anti-APX2 antibody
Description	Rabbit polyclonal to APX2
Host species	Rabbit
Tested applications	Suitable for: WB
Species reactivity	Reacts with: Arabidopsis thaliana
Immunogen	Recombinant fragment corresponding to Arabidopsis thaliana APX2 aa 1-250. Database link: Q1PER6
	 Run BLAST with  Run BLAST with
Positive control	WB: Arabidopsis thaliana lysate.
General notes	<p>The Life Science industry has been in the grips of a reproducibility crisis for a number of years. Abcam is leading the way in addressing this with our range of recombinant monoclonal antibodies and knockout edited cell lines for gold-standard validation. Please check that this product meets your needs before purchasing.</p> <p>If you have any questions, special requirements or concerns, please send us an inquiry and/or contact our Support team ahead of purchase. Recommended alternatives for this product can be found below, along with publications, customer reviews and Q&As</p>

Properties

Form	Liquid
Storage instructions	Shipped at 4°C. Store at +4°C short term (1-2 weeks). Upon delivery aliquot. Store at -20°C long term. Avoid freeze / thaw cycle.
Storage buffer	pH: 7.40 Preservative: 0.03% Proclin 300 Constituents: 50% Glycerol (glycerin, glycerine), PBS
Purity	Caprylic Acid - Ammonium Sulfate precipitation
Clonality	Polyclonal
Isotype	IgG

Applications

The Abpromise guarantee

Our **Abpromise guarantee** covers the use of ab222414 in the following tested applications.

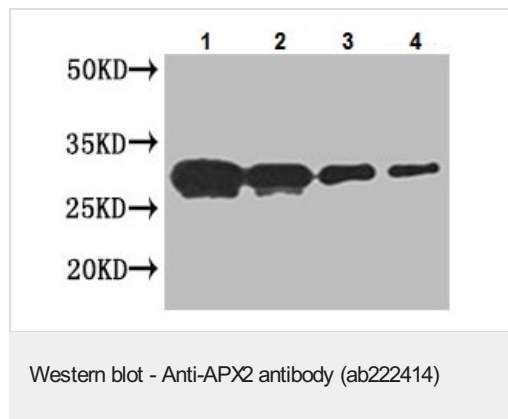
The application notes include recommended starting dilutions; optimal dilutions/concentrations should be determined by the end user.

Application	Abreviews	Notes
WB		1/2000 - 1/5000. Predicted molecular weight: 28 kDa.

Target

Function	Plays a key role in hydrogen peroxide removal.
Tissue specificity	Detected in bundle sheath cells, the photosynthetic cells that surround the phloem and xylem.
Sequence similarities	Belongs to the peroxidase family. Ascorbate peroxidase subfamily.
Cellular localization	Cytoplasm.

Images



All lanes : Anti-APX2 antibody (ab222414) at 1/2000 dilution

Lane 1 : Arabidopsis thaliana lysate at 40 µg

Lane 2 : Arabidopsis thaliana lysate at 20 µg

Lane 3 : Arabidopsis thaliana lysate at 10 µg

Lane 4 : Arabidopsis thaliana lysate at 5 µg

Secondary

All lanes : Goat polyclonal to rabbit IgG at 1/50000 dilution

Predicted band size: 28 kDa

Please note: All products are "FOR RESEARCH USE ONLY. NOT FOR USE IN DIAGNOSTIC PROCEDURES"

Our Abpromise to you: Quality guaranteed and expert technical support

- Replacement or refund for products not performing as stated on the datasheet
- Valid for 12 months from date of delivery
- Response to your inquiry within 24 hours
- We provide support in Chinese, English, French, German, Japanese and Spanish
- Extensive multi-media technical resources to help you
- We investigate all quality concerns to ensure our products perform to the highest standards

If the product does not perform as described on this datasheet, we will offer a refund or replacement. For full details of the Abpromise, please visit <https://www.abcam.com/abpromise> or contact our technical team.

Terms and conditions

- Guarantee only valid for products bought direct from Abcam or one of our authorized distributors