

## Product datasheet

# Anti-AQP-10 antibody - C-terminal ab182794

[1 Image](#)

### Overview

---

<b>Product name</b>	Anti-AQP-10 antibody - C-terminal
<b>Description</b>	Rabbit polyclonal to AQP-10 - C-terminal
<b>Host species</b>	Rabbit
<b>Tested applications</b>	<b>Suitable for:</b> WB
<b>Species reactivity</b>	<b>Reacts with:</b> Human
<b>Immunogen</b>	Synthetic peptide corresponding to Human AQP-10 aa 250 to the C-terminus (C terminal). Database link: <a href="#">Q96PS8</a>

 [Run BLAST with](#)

 [Run BLAST with](#)

### General notes

The Life Science industry has been in the grips of a reproducibility crisis for a number of years. Abcam is leading the way in addressing this with our range of recombinant monoclonal antibodies and knockout edited cell lines for gold-standard validation. Please check that this product meets your needs before purchasing.

If you have any questions, special requirements or concerns, please send us an inquiry and/or contact our Support team ahead of purchase. Recommended alternatives for this product can be found below, along with publications, customer reviews and Q&As

### Properties

---

<b>Form</b>	Liquid
<b>Storage instructions</b>	Shipped at 4°C. Store at +4°C short term (1-2 weeks). Upon delivery aliquot. Store at -20°C long term. Avoid freeze / thaw cycle.
<b>Storage buffer</b>	pH: 7.4 Preservative: 0.05% Sodium azide Constituents: 50% Glycerol (glycerin, glycerine), 49% PBS  (without Mg <sup>2+</sup> and Ca <sup>2+</sup> )
<b>Purity</b>	Immunogen affinity purified
<b>Clonality</b>	Polyclonal
<b>Isotype</b>	IgG

### Applications

## Applications

### The Abpromise guarantee

Our **Abpromise guarantee** covers the use of ab182794 in the following tested applications.

The application notes include recommended starting dilutions; optimal dilutions/concentrations should be determined by the end user.

Application	Abreviews	Notes
WB		1/500 - 1/2000. Predicted molecular weight: 32 kDa.

## Target

### Function

Water channel required to promote glycerol permeability and water transport across cell membranes. May contribute to water transport in the upper portion of small intestine. Isoform 2 is not permeable to urea and glycerol.

### Tissue specificity

Expressed exclusively in duodenum and jejunum. Highest expression in absorptive epithelial cells at the tips of villi in the jejunum.

### Sequence similarities

Belongs to the MIP/aquaporin (TC 1.A.8) family.

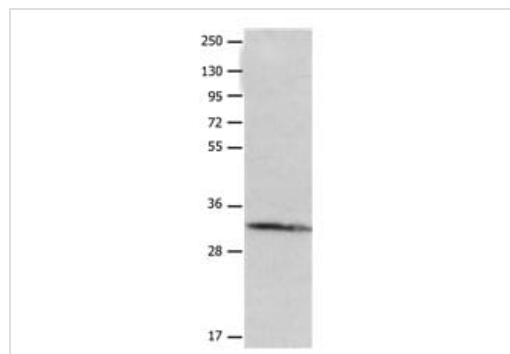
### Domain

Aquaporins contain two tandem repeats each containing three membrane-spanning domains and a pore-forming loop with the signature motif Asn-Pro-Ala (NPA).

### Cellular localization

Membrane.

## Images



Western blot - Anti-AQP-10 antibody - C-terminal (ab182794)

Anti-AQP-10 antibody - C-terminal (ab182794) at 1/455 dilution + Jurkat cell at 50 µg

### Secondary

Goat anti Rabbit IgG at 1/5000 dilution

**Predicted band size:** 32 kDa

**Exposure time:** 1 minute

**Please note:** All products are "FOR RESEARCH USE ONLY. NOT FOR USE IN DIAGNOSTIC PROCEDURES"

## Our Abpromise to you: Quality guaranteed and expert technical support

- Replacement or refund for products not performing as stated on the datasheet
- Valid for 12 months from date of delivery
- Response to your inquiry within 24 hours
- We provide support in Chinese, English, French, German, Japanese and Spanish

- Extensive multi-media technical resources to help you
- We investigate all quality concerns to ensure our products perform to the highest standards

If the product does not perform as described on this datasheet, we will offer a refund or replacement. For full details of the Abpromise, please visit <https://www.abcam.com/abpromise> or contact our technical team.

### **Terms and conditions**

---

- Guarantee only valid for products bought direct from Abcam or one of our authorized distributors