


Product datasheet

Anti-ARFRP1/ARP antibody [EPR3899] ab108199

Recombinant RabMAb

[3 References](#) [3 Images](#)

Overview

Product name	Anti-ARFRP1/ARP antibody [EPR3899]
Description	Rabbit monoclonal [EPR3899] to ARFRP1/ARP
Host species	Rabbit
Tested applications	Suitable for: WB, ICC/IF Unsuitable for: Flow Cyt or IHC-P
Species reactivity	Reacts with: Human Predicted to work with: Mouse, Rat 
Immunogen	Synthetic peptide. This information is proprietary to Abcam and/or its suppliers.
Positive control	WB: HepG2 and HEK-293T cell lysate. Fetal liver and ovary cancer lysates ICC/IF: HeLa cells
General notes	This product is a recombinant monoclonal antibody, which offers several advantages including: <ul style="list-style-type: none">- High batch-to-batch consistency and reproducibility- Improved sensitivity and specificity- Long-term security of supply- Animal-free production For more information see here . Our RabMAb [®] technology is a patented hybridoma-based technology for making rabbit monoclonal antibodies. For details on our patents, please refer to RabMAb[®] patents .

Properties

Form	Liquid
Storage instructions	Shipped at 4°C. Store at -20°C. Stable for 12 months at -20°C.
Storage buffer	pH: 7.20 Preservative: 0.05% Sodium azide Constituents: 0.1% BSA, 40% Glycerol (glycerin, glycerine), 9.85% Tris glycine, 50% Tissue culture supernatant
Purity	Protein A purified
Clonality	Monoclonal
Clone number	EPR3899

Isotype

IgG

Applications

The Abpromise guarantee

Our **Abpromise guarantee** covers the use of ab108199 in the following tested applications.

The application notes include recommended starting dilutions; optimal dilutions/concentrations should be determined by the end user.

Application	Abreviews	Notes
WB		1/1000 - 1/10000. Detects a band of approximately 22 kDa (predicted molecular weight: 23 kDa).
ICC/IF		1/500.

Application notes

Is unsuitable for Flow Cyt or IHC-P.

Target

Function

Possibly involved in plasma membrane-related signaling events.

Tissue specificity

Found in most tissues.

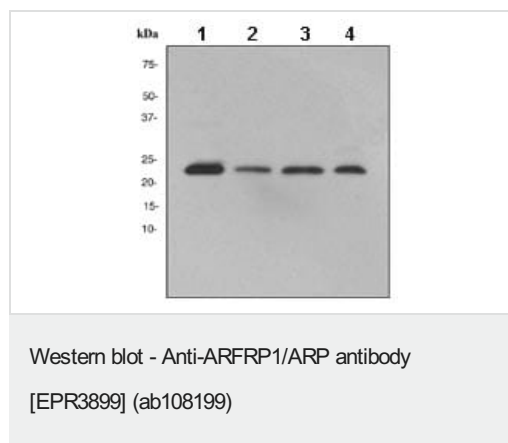
Sequence similarities

Belongs to the small GTPase superfamily. Arf family.

Cellular localization

Golgi apparatus.

Images



All lanes : Anti-ARFRP1/ARP antibody [EPR3899] (ab108199) at 1/1000 dilution

Lane 1 : HepG2 (Human liver hepatocellular carcinoma cell line) cell lysate

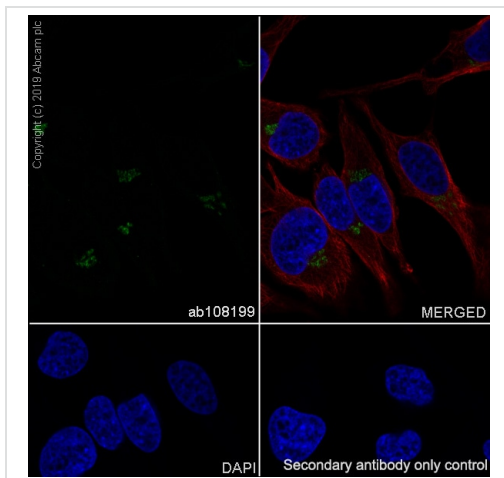
Lane 2 : HEK-293T (Human epithelial cell line from embryonic kidney transformed with large T antigen) cell lysate

Lane 3 : Fetal liver lysate

Lane 4 : Ovary cancer lysate

Lysates/proteins at 10 µg per lane.





Predicted band size: 23 kDa



Immunocytochemistry/ Immunofluorescence - Anti-ARFRP1/ARP antibody [EPR3899] (ab108199)

Immunocytochemistry/ Immunofluorescence analysis of HeLa (human cervix adenocarcinoma epithelial cell) cells labeling ARFRP1/ARP with purified ab108199 at 1/500 dilution (4.8 µg/mL). Cells were fixed in 4% Paraformaldehyde and permeabilized with 0.1% tritonX-100. Cells were counterstained with **ab195889** Anti-alpha Tubulin antibody [DM1A] - Microtubule Marker (Alexa Fluor® 594) at 1/200 (2.5 µg/mL). Goat anti rabbit IgG (Alexa Fluor® 488, **ab150077**) was used as the secondary antibody at 1/1000 (2 µg/mL) dilution. DAPI (blue) was used as nuclear counterstain. **ab195889** Anti-alpha Tubulin antibody [DM1A] - Microtubule Marker (Alexa Fluor® 594) 1/200 (2.5 µg/mL) was used as the secondary antibody only control.

Why choose a recombinant antibody?

 <p>Research with confidence Consistent and reproducible results</p>	 <p>Long-term and scalable supply Recombinant technology</p>
 <p>Success from the first experiment Confirmed specificity</p>	 <p>Ethical standards compliant Animal-free production</p>

Anti-ARFRP1/ARP antibody [EPR3899] (ab108199)

Please note: All products are "FOR RESEARCH USE ONLY. NOT FOR USE IN DIAGNOSTIC PROCEDURES"

Our Abpromise to you: Quality guaranteed and expert technical support

- Replacement or refund for products not performing as stated on the datasheet
- Valid for 12 months from date of delivery
- Response to your inquiry within 24 hours
- We provide support in Chinese, English, French, German, Japanese and Spanish
- Extensive multi-media technical resources to help you
- We investigate all quality concerns to ensure our products perform to the highest standards

If the product does not perform as described on this datasheet, we will offer a refund or replacement. For full details of the Abpromise, please visit <https://www.abcam.com/abpromise> or contact our technical team.

Terms and conditions

- Guarantee only valid for products bought direct from Abcam or one of our authorized distributors