


Product datasheet

Anti-Argininosuccinate Lyase antibody ab96215

4 Images

Overview

Product name	Anti-Argininosuccinate Lyase antibody
Description	Rabbit polyclonal to Argininosuccinate Lyase
Host species	Rabbit
Tested applications	Suitable for: WB, ICC/IF, IHC-P
Species reactivity	Reacts with: Human Predicted to work with: Mouse, Cow 
Immunogen	Recombinant fragment corresponding to Human Argininosuccinate Lyase aa 86-335. Database link: P04424
Positive control	WB: MOLT-4, HeLa, IHC-P: DLD1 xenograft. ICC/IF: HeLa.
General notes	<p>The Life Science industry has been in the grips of a reproducibility crisis for a number of years. Abcam is leading the way in addressing this with our range of recombinant monoclonal antibodies and knockout edited cell lines for gold-standard validation. Please check that this product meets your needs before purchasing.</p> <p>If you have any questions, special requirements or concerns, please send us an inquiry and/or contact our Support team ahead of purchase. Recommended alternatives for this product can be found below, along with publications, customer reviews and Q&As</p>

Properties

Form	Liquid
Storage instructions	Shipped at 4°C. Upon delivery aliquot and store at -20°C or -80°C. Avoid repeated freeze / thaw cycles.
Storage buffer	pH: 7.00 Preservative: 0.01% Thimerosal (merthiolate) Constituents: 1.21% Tris, 0.75% Glycine, 10% Glycerol (glycerin, glycerine)
Purity	Immunogen affinity purified
Clonality	Polyclonal
Isotype	IgG

Applications

The Abpromise guarantee

Our **Abpromise guarantee** covers the use of ab96215 in the following tested applications.

The application notes include recommended starting dilutions; optimal dilutions/concentrations should be determined by the end user.

Application	Abreviews	Notes
WB		1/500 - 1/3000. Predicted molecular weight: 52 kDa.
ICC/IF		1/100 - 1/1000.
IHC-P		1/100 - 1/1000.

Target**Pathway**

Amino-acid biosynthesis; L-arginine biosynthesis; L-arginine from L-ornithine and carbamoyl phosphate: step 3/3.
Nitrogen metabolism; urea cycle; L-arginine and fumarate from (N(omega)-L-arginino)succinate: step 1/1.

Involvement in disease

Defects in *ASL* are the cause of arginosuccinicaciduria (*ARGINSA*) [MIM:207900].
Arginosuccinicaciduria is an autosomal recessive disorder of the urea cycle. The disease is characterized by mental and physical retardation, liver enlargement, skin lesions, dry and brittle hair showing trichorrhexis nodosa microscopically and fluorescing red, convulsions, and episodic unconsciousness.

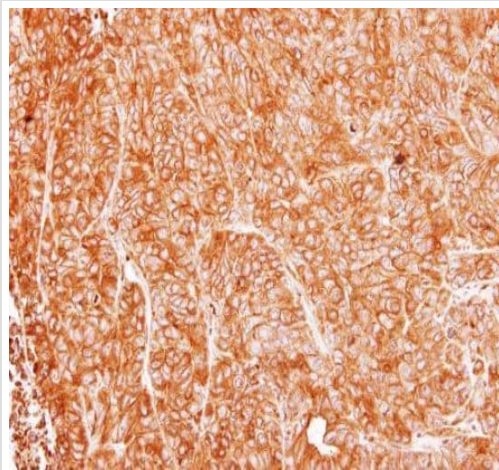
Sequence similarities

Belongs to the lyase 1 family. Argininosuccinate lyase subfamily.

Post-translational modifications

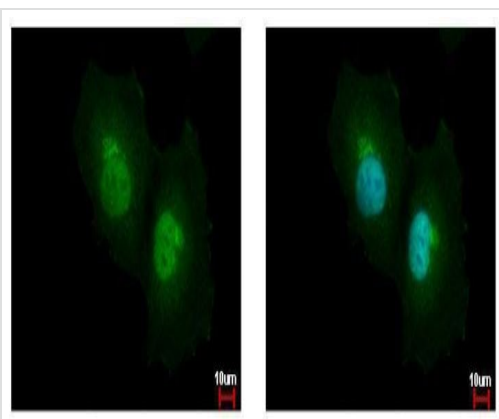
Acetylation modifies enzyme activity in response to alterations of extracellular nutrient availability. Acetylation increased with trichostin A (TSA) or with nicotinamide (NAM). Glucose increases acetylation by about a factor of 3 with decreasing enzyme activity. Acetylation on Lys-288 is decreased on the addition of extra amino acids resulting in activation of enzyme activity.

Images



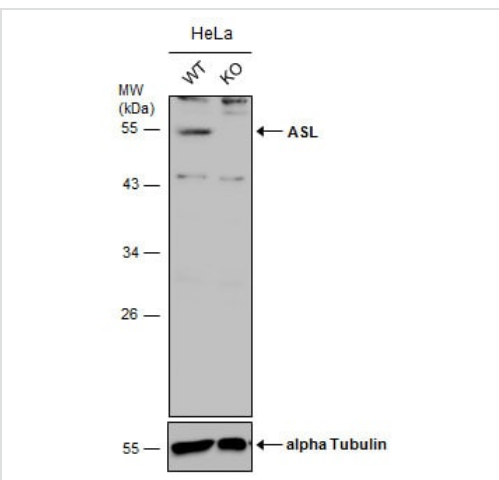
Immunohistochemistry (Formalin/PFA-fixed paraffin-embedded sections) - Anti-Argininosuccinate Lyase antibody (ab96215)

Paraffin embedded DLD1 xenograft stained for ASL using ab96215 at 1/500 dilution in immunohistochemical analysis.



Immunocytochemistry/ Immunofluorescence - Anti-Argininosuccinate Lyase antibody (ab96215)

HeLa cells stained for ASL (green) using ab96215 at 1/500 dilution in ICC/IF.



Western blot - Anti-Argininosuccinate Lyase antibody (ab96215)

All lanes : Anti-Argininosuccinate Lyase antibody (ab96215) at 1/1000 dilution

Lane 1 : Wild-type HeLa cell extract

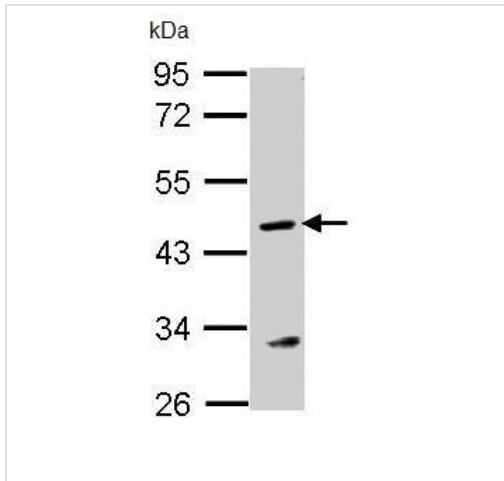
Lane 2 : Argininosuccinate Lyase Knockout HeLa cell extracts

Lysates/proteins at 30 μg per lane.

Secondary

All lanes : HRP-conjugated anti-rabbit IgG

Predicted band size: 52 kDa



Anti-Argininosuccinate Lyase antibody (ab96215) at 1/1000 dilution
+ MOLT-4 whole cell lysate at 30 μ g

Predicted band size: 52 kDa

10% SDS PAGE

Western blot - Anti-Argininosuccinate Lyase
antibody (ab96215)

Please note: All products are "FOR RESEARCH USE ONLY. NOT FOR USE IN DIAGNOSTIC PROCEDURES"

Our Abpromise to you: Quality guaranteed and expert technical support

- Replacement or refund for products not performing as stated on the datasheet
- Valid for 12 months from date of delivery
- Response to your inquiry within 24 hours
- We provide support in Chinese, English, French, German, Japanese and Spanish
- Extensive multi-media technical resources to help you
- We investigate all quality concerns to ensure our products perform to the highest standards

If the product does not perform as described on this datasheet, we will offer a refund or replacement. For full details of the Abpromise, please visit <https://www.abcam.com/abpromise> or contact our technical team.

Terms and conditions

- Guarantee only valid for products bought direct from Abcam or one of our authorized distributors