


Product datasheet

Anti-ARHGEF6 antibody [EPR11700(2)] ab184569

Recombinant RabMAb

[2 References](#) [3 Images](#)

Overview

Product name	Anti-ARHGEF6 antibody [EPR11700(2)]
Description	Rabbit monoclonal [EPR11700(2)] to ARHGEF6
Host species	Rabbit
Tested applications	Suitable for: WB, IHC-P
Species reactivity	Reacts with: Human Predicted to work with: Mouse, Rat 
Immunogen	Synthetic peptide. This information is proprietary to Abcam and/or its suppliers.
Positive control	Raji, Jurkat and HeLa whole cell lysate (ab150035); Human transitional cell carcinoma of bladder tissue.
General notes	<p>This product is a recombinant monoclonal antibody, which offers several advantages including:</p> <ul style="list-style-type: none"> - High batch-to-batch consistency and reproducibility - Improved sensitivity and specificity - Long-term security of supply - Animal-free production <p>For more information see here.</p> <p>Our RabMAb[®] technology is a patented hybridoma-based technology for making rabbit monoclonal antibodies. For details on our patents, please refer to RabMAb[®] patents.</p>

Properties

Form	Liquid
Storage instructions	Shipped at 4°C. Store at +4°C short term (1-2 weeks). Upon delivery aliquot. Store at -20°C long term. Avoid freeze / thaw cycle.
Storage buffer	pH: 7.2 Preservative: 0.01% Sodium azide Constituents: 0.05% BSA, 40% Glycerol, 59% PBS
Purity	Protein A purified
Clonality	Monoclonal
Clone number	EPR11700(2)

Isotype

IgG

Applications

The Abpromise guarantee

Our **Abpromise guarantee** covers the use of ab184569 in the following tested applications.

The application notes include recommended starting dilutions; optimal dilutions/concentrations should be determined by the end user.

Application	Abreviews	Notes
WB		1/10000 - 1/50000. Detects a band of approximately 87 kDa (predicted molecular weight: 87 kDa).
IHC-P		1/50. Perform heat mediated antigen retrieval with Tris/EDTA buffer pH 9.0 before commencing with IHC staining protocol.

Target

Function

Acts as a RAC1 guanine nucleotide exchange factor (GEF).

Tissue specificity

Ubiquitous.

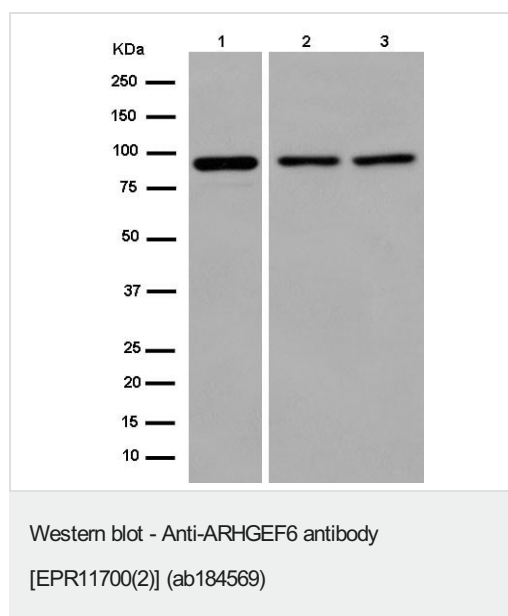
Involvement in disease

Defects in ARHGEF6 are the cause of mental retardation X-linked type 46 (MRX46) [MIM:300436]. Mental retardation is a mental disorder characterized by significantly sub-average general intellectual functioning associated with impairments in adaptive behavior and manifested during the developmental period. Non-syndromic mental retardation patients do not manifest other clinical signs.

Sequence similarities

Contains 1 CH (calponin-homology) domain.
Contains 1 DH (DBL-homology) domain.
Contains 1 PH domain.
Contains 1 SH3 domain.

Images



All lanes : Anti-ARHGEF6 antibody [EPR11700(2)] (ab184569) at 1/10000 dilution

Lane 1 : Raji cell lysate

Lane 2 : Jurkat cell lysate

Lane 3 : HeLa cell lysate

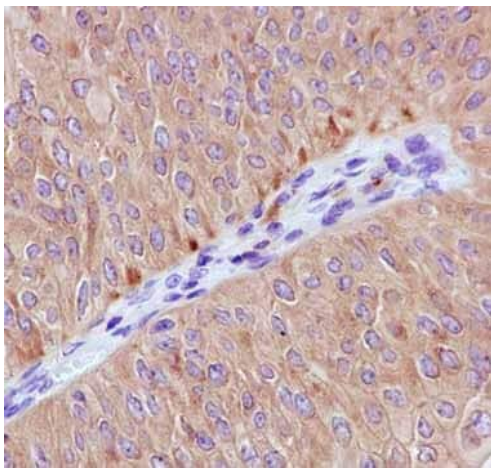
Lysates/proteins at 20 µg per lane.

Secondary

All lanes : Goat Anti-Rabbit IgG, (H+L), Peroxidase conjugate at 1/1000 dilution

Predicted band size: 87 kDa

Observed band size: 87 kDa

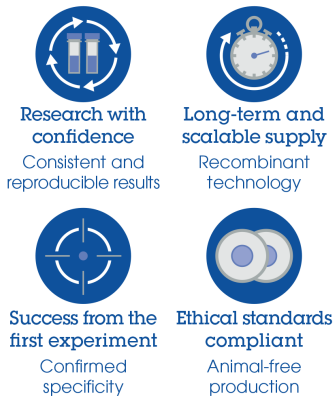


Immunohistochemistry (Formalin/PFA-fixed paraffin-embedded sections) - Anti-ARHGEF6 antibody [EPR11700(2)] (ab184569)

Immunohistochemical analysis of paraffin-embedded Human transitional cell carcinoma of bladder tissue labeling ARHGEF6 with ab184569 at 1/50 dilution followed by prediluted HRP Polymer for Rabbit IgG. Counter stained with Hematoxylin.

Perform heat mediated antigen retrieval with EDTA buffer pH 9 before commencing with IHC staining protocol.

Why choose a recombinant antibody?



Anti-ARHGEF6 antibody [EPR11700(2)] (ab184569)

Please note: All products are "FOR RESEARCH USE ONLY. NOT FOR USE IN DIAGNOSTIC PROCEDURES"

Our Promise to you: Quality guaranteed and expert technical support

- Replacement or refund for products not performing as stated on the datasheet
- Valid for 12 months from date of delivery
- Response to your inquiry within 24 hours
- We provide support in Chinese, English, French, German, Japanese and Spanish
- Extensive multi-media technical resources to help you
- We investigate all quality concerns to ensure our products perform to the highest standards

If the product does not perform as described on this datasheet, we will offer a refund or replacement. For full details of the Abpromise, please visit <https://www.abcam.com/abpromise> or contact our technical team.

Terms and conditions

- Guarantee only valid for products bought direct from Abcam or one of our authorized distributors