

Product datasheet

Anti-ARL6IP2 antibody ab237631

[4 Images](#)

Overview

Product name	Anti-ARL6IP2 antibody
Description	Rabbit polyclonal to ARL6IP2
Host species	Rabbit
Tested applications	Suitable for: WB, ICC/IF, IHC-P
Species reactivity	Reacts with: Human
Immunogen	Recombinant fragment corresponding to Human ARL6IP2 aa 1-300. Database link: Q8NHH9
Positive control	WB: HepG2, MCF7, HL-60, K562, U-251 MG, A549 and A431 whole cell lysates. IHC-P: Human prostate cancer and colon cancer tissues. ICC/IF: HepG2 cells.
General notes	<p>The Life Science industry has been in the grips of a reproducibility crisis for a number of years. Abcam is leading the way in addressing this with our range of recombinant monoclonal antibodies and knockout edited cell lines for gold-standard validation. Please check that this product meets your needs before purchasing.</p> <p>If you have any questions, special requirements or concerns, please send us an inquiry and/or contact our Support team ahead of purchase. Recommended alternatives for this product can be found below, along with publications, customer reviews and Q&As</p>

Properties

Form	Liquid
Storage instructions	Shipped at 4°C. Store at +4°C short term (1-2 weeks). Upon delivery aliquot. Store at -20°C long term. Avoid freeze / thaw cycle.
Storage buffer	pH: 7.40 Preservative: 0.03% Proclin 300 Constituents: 50% Glycerol (glycerin, glycerine), PBS
Purity	Protein G purified
Purification notes	Purity greater than 95%.
Clonality	Polyclonal
Isotype	IgG

Applications

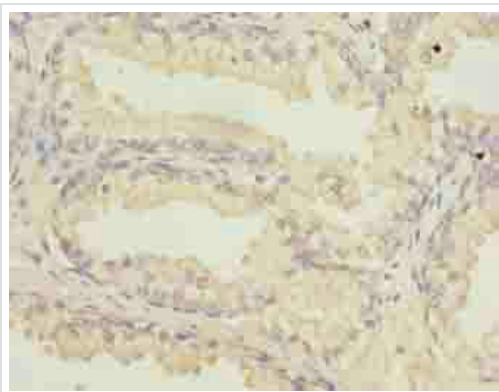
The Abpromise guarantee Our **Abpromise guarantee** covers the use of ab237631 in the following tested applications. The application notes include recommended starting dilutions; optimal dilutions/concentrations should be determined by the end user.

Application	Abreviews	Notes
WB		1/500 - 1/2000. Predicted molecular weight: 66 kDa.
ICC/IF		1/50 - 1/200.
IHC-P		1/20 - 1/200.

Target

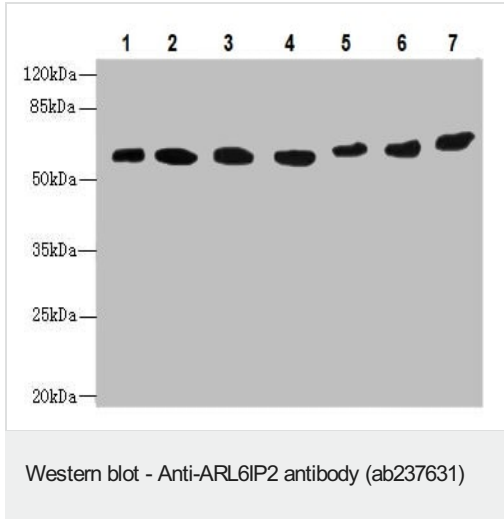
Function	GTPase tethering membranes through formation of trans-homooligomer and mediating homotypic fusion of endoplasmic reticulum membranes. Functions in endoplasmic reticulum tubular network biogenesis.
Tissue specificity	Expressed in peripheral tissues (at protein level).
Sequence similarities	Belongs to the GBP family. Atlastin subfamily.
Cellular localization	Endoplasmic reticulum membrane.

Images



Paraffin-embedded human prostate cancer tissue stained for ARL6IP2 using ab237631 at 1/100 dilution in immunohistochemical analysis.

Immunohistochemistry (Formalin/PFA-fixed paraffin-embedded sections) - Anti-ARL6IP2 antibody (ab237631)



All lanes : Anti-ARL6IP2 antibody (ab237631) at 1/500 dilution

Lane 1 : HepG2 (human liver hepatocellular carcinoma cell line) whole cell lysate

Lane 2 : MCF7 (human breast adenocarcinoma cell line) whole cell lysate

Lane 3 : HL-60 (human promyelocytic leukemia cell line) whole cell lysate

Lane 4 : K562 (human chronic myelogenous leukemia cell line from bone marrow) whole cell lysate

Lane 5 : U-251 MG (human brain glioma cell line) whole cell lysate

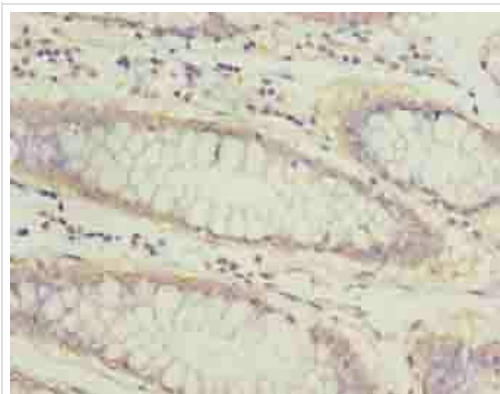
Lane 6 : A549 (human lung carcinoma cell line) whole cell lysate

Lane 7 : A431 (human epidermoid carcinoma cell line) whole cell lysate

Secondary

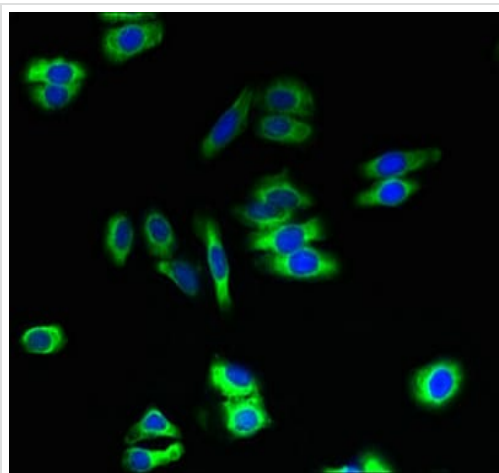
All lanes : Goat polyclonal to Rabbit IgG at 1/10000 dilution

Predicted band size: 66 kDa



Paraffin-embedded human colon cancer tissue stained for ARL6IP2 using ab237631 at 1/100 dilution in immunohistochemical analysis.

Immunohistochemistry (Formalin/PFA-fixed paraffin-embedded sections) - Anti-ARL6IP2 antibody (ab237631)



Immunocytochemistry/ Immunofluorescence - Anti-ARL6IP2 antibody (ab237631)

HepG2 (human liver hepatocellular carcinoma cell line) cells stained for ARL6IP2 (green) using ab237631 at 1/100 dilution in ICC/IF, followed by Alexa Fluor 488[®] conjugated Goat Anti-Rabbit IgG (H+L) secondary antibody.

Please note: All products are "FOR RESEARCH USE ONLY. NOT FOR USE IN DIAGNOSTIC PROCEDURES"

Our Abpromise to you: Quality guaranteed and expert technical support

- Replacement or refund for products not performing as stated on the datasheet
- Valid for 12 months from date of delivery
- Response to your inquiry within 24 hours
- We provide support in Chinese, English, French, German, Japanese and Spanish
- Extensive multi-media technical resources to help you
- We investigate all quality concerns to ensure our products perform to the highest standards

If the product does not perform as described on this datasheet, we will offer a refund or replacement. For full details of the Abpromise, please visit <https://www.abcam.com/abpromise> or contact our technical team.

Terms and conditions

- Guarantee only valid for products bought direct from Abcam or one of our authorized distributors