




Anti-ARL8B antibody ab207697

[1 References](#) [1 Image](#)

Overview

Product name	Anti-ARL8B antibody
Description	Rabbit polyclonal to ARL8B
Host species	Rabbit
Tested applications	Suitable for: WB
Species reactivity	Reacts with: Human Predicted to work with: Mouse, Rat, Cow, Cynomolgus monkey, Orangutan 
Immunogen	Recombinant fragment corresponding to Human ARL8B aa 1 to the C-terminus. (BC013131). Database link: Q9NVJ2  Run BLAST with  Run BLAST with
Positive control	WB: Jurkat cell lysate.
General notes	<p>The Life Science industry has been in the grips of a reproducibility crisis for a number of years. Abcam is leading the way in addressing this with our range of recombinant monoclonal antibodies and knockout edited cell lines for gold-standard validation. Please check that this product meets your needs before purchasing.</p> <p>If you have any questions, special requirements or concerns, please send us an inquiry and/or contact our Support team ahead of purchase. Recommended alternatives for this product can be found below, along with publications, customer reviews and Q&As</p>

Properties

Form	Lyophilized:Reconstitute in 200 µL sterile water.
Storage instructions	Shipped at 4°C. Store at +4°C short term (1-2 weeks). Upon delivery aliquot. Store at -20°C long term. Avoid freeze / thaw cycle.
Storage buffer	pH: 7.20 Preservative: 0.02% Sodium azide Constituents: 98% PBS, 1% BSA
Purity	Immunogen affinity purified
Clonality	Polyclonal
Isotype	IgG

Applications

The Abpromise guarantee

Our **Abpromise guarantee** covers the use of ab207697 in the following tested applications.

The application notes include recommended starting dilutions; optimal dilutions/concentrations should be determined by the end user.

Application	Abreviews	Notes
WB		1/200 - 1/1000. Detects a band of approximately 15 kDa (predicted molecular weight: 21 kDa).

Target

Function

May play a role in lysosome motility (PubMed:16537643). May play a role in chromosome segregation (PubMed:15331635).

Tissue specificity

Ubiquitously expressed.

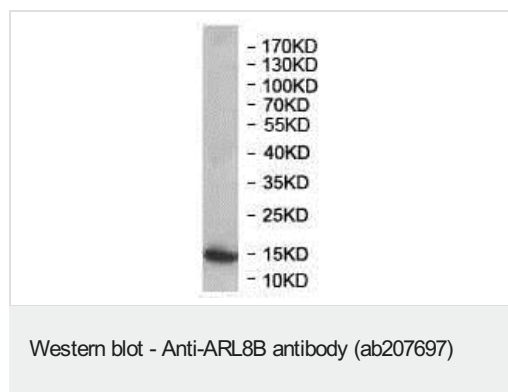
Sequence similarities

Belongs to the small GTPase superfamily. Arf family.

Cellular localization

Late endosome membrane. Lysosome membrane. Cytoplasm > cytoskeleton > spindle. According to PubMed:15331635, it localizes with microtubules at the spindle mid-zone during mitosis.

Images



Anti-ARL8B antibody (ab207697) at 1/1000 dilution + Jurkat cell lysate

Predicted band size: 21 kDa

Observed band size: 15 kDa

Please note: All products are "FOR RESEARCH USE ONLY. NOT FOR USE IN DIAGNOSTIC PROCEDURES"

Our Abpromise to you: Quality guaranteed and expert technical support

- Replacement or refund for products not performing as stated on the datasheet
- Valid for 12 months from date of delivery
- Response to your inquiry within 24 hours
- We provide support in Chinese, English, French, German, Japanese and Spanish
- Extensive multi-media technical resources to help you
- We investigate all quality concerns to ensure our products perform to the highest standards

If the product does not perform as described on this datasheet, we will offer a refund or replacement. For full details of the Abpromise,

please visit <https://www.abcam.com/abpromise> or contact our technical team.

Terms and conditions

- Guarantee only valid for products bought direct from Abcam or one of our authorized distributors