


## Product datasheet

# Anti-ARPC5/p16 ARC antibody ab151303

[15 References](#) [2 Images](#)

### Overview

---

<b>Product name</b>	Anti-ARPC5/p16 ARC antibody
<b>Description</b>	Rabbit polyclonal to ARPC5/p16 ARC
<b>Host species</b>	Rabbit
<b>Specificity</b>	This antibody is specific to the p16 ARC protein, database link: <a href="#">O15511</a> . There is no observed cross reactivity to the CDKN2A/p16INK4a protein.
<b>Tested applications</b>	<b>Suitable for:</b> WB, IHC-P
<b>Species reactivity</b>	<b>Reacts with:</b> Human <b>Predicted to work with:</b> Mouse, Rat, Chicken, Cow, Pig 
<b>Immunogen</b>	Recombinant fragment corresponding to Human ARPC5/p16 ARC aa 1-200.
<b>Positive control</b>	THP1 and HL60 cells lysates; Colon cancer tissue
<b>General notes</b>	<p>The Life Science industry has been in the grips of a reproducibility crisis for a number of years. Abcam is leading the way in addressing this with our range of recombinant monoclonal antibodies and knockout edited cell lines for gold-standard validation. Please check that this product meets your needs before purchasing.</p> <p>If you have any questions, special requirements or concerns, please send us an inquiry and/or contact our Support team ahead of purchase. Recommended alternatives for this product can be found below, along with publications, customer reviews and Q&amp;As</p>

### Properties

---

<b>Form</b>	Liquid
<b>Storage instructions</b>	Shipped at 4°C. Upon delivery aliquot. Store at -20°C or -80°C. Avoid freeze / thaw cycle.
<b>Storage buffer</b>	pH: 7.00 Preservative: 0.025% Proclin 300 Constituents: 79% PBS, 20% Glycerol (glycerin, glycerine)
<b>Purity</b>	Immunogen affinity purified
<b>Clonality</b>	Polyclonal
<b>Isotype</b>	IgG

## Applications

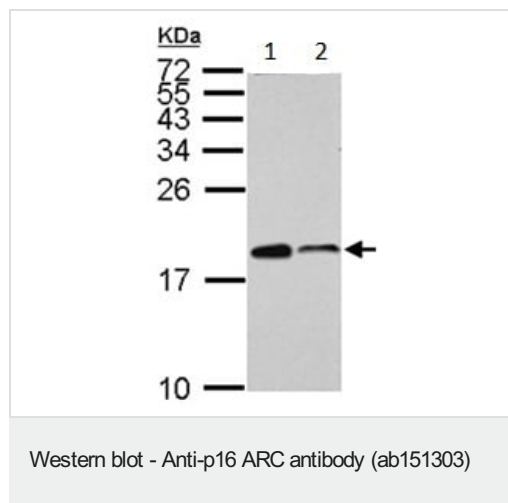
**The Abpromise guarantee** Our **Abpromise guarantee** covers the use of ab151303 in the following tested applications. The application notes include recommended starting dilutions; optimal dilutions/concentrations should be determined by the end user.

Application	Abreviews	Notes
WB		1/500 - 1/3000. Predicted molecular weight: 16 kDa.
IHC-P		1/100 - 1/1000.

## Target

<b>Function</b>	Functions as component of the Arp2/3 complex which is involved in regulation of actin polymerization and together with an activating nucleation-promoting factor (NPF) mediates the formation of branched actin networks.
<b>Sequence similarities</b>	Belongs to the ARPC5 family.
<b>Cellular localization</b>	Cytoplasm > cytoskeleton. Cell projection.

## Images



**All lanes** : Anti-ARPC5/p16 ARC antibody (ab151303) at 1/500 dilution

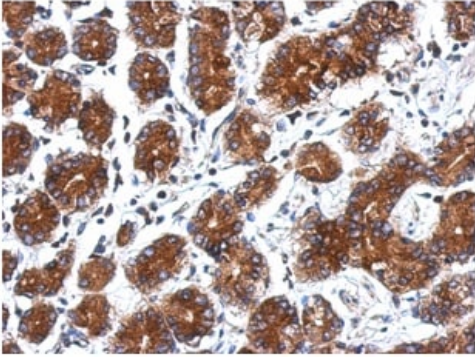
**Lane 1** : THP1 whole cell lysate

**Lane 2** : HL60 whole cell lysate

Lysates/proteins at 30 µg per lane.

**Predicted band size:** 16 kDa

15% SDS PAGE



Immunohistochemical analysis of paraffin-embedded Human colon cancer labeling p16 ARC with ab151303 antibody at 1/500 dilution.

Immunohistochemistry (Formalin/PFA-fixed paraffin-embedded sections) - Anti-p16 ARC antibody (ab151303)

**Please note:** All products are "FOR RESEARCH USE ONLY. NOT FOR USE IN DIAGNOSTIC PROCEDURES"

### **Our Abpromise to you: Quality guaranteed and expert technical support**

---

- Replacement or refund for products not performing as stated on the datasheet
- Valid for 12 months from date of delivery
- Response to your inquiry within 24 hours
  
- We provide support in Chinese, English, French, German, Japanese and Spanish
- Extensive multi-media technical resources to help you
- We investigate all quality concerns to ensure our products perform to the highest standards

If the product does not perform as described on this datasheet, we will offer a refund or replacement. For full details of the Abpromise, please visit <https://www.abcam.com/abpromise> or contact our technical team.

### **Terms and conditions**

---

- Guarantee only valid for products bought direct from Abcam or one of our authorized distributors