


## Product datasheet

# Anti-ARSA/ASA antibody ab74804

[2 Images](#)

### Overview

---

<b>Product name</b>	Anti-ARSA/ASA antibody
<b>Description</b>	Rabbit polyclonal to ARSA/ASA
<b>Host species</b>	Rabbit
<b>Tested applications</b>	<b>Suitable for:</b> IHC-P, WB
<b>Species reactivity</b>	<b>Reacts with:</b> Human <b>Predicted to work with:</b> Mouse, Rat 
<b>Immunogen</b>	Synthetic peptide corresponding to Human ARSA/ASA (internal sequence).
<b>Positive control</b>	Human cervix carcinoma tissue. Jurkat and COLO 205 cell extracts.
<b>General notes</b>	<p>The Life Science industry has been in the grips of a reproducibility crisis for a number of years. Abcam is leading the way in addressing this with our range of recombinant monoclonal antibodies and knockout edited cell lines for gold-standard validation. Please check that this product meets your needs before purchasing.</p> <p>If you have any questions, special requirements or concerns, please send us an inquiry and/or contact our Support team ahead of purchase. Recommended alternatives for this product can be found below, along with publications, customer reviews and Q&amp;As</p>

### Properties

---

<b>Form</b>	Liquid
<b>Storage instructions</b>	Shipped at 4°C. Upon delivery aliquot and store at -20°C. Avoid freeze / thaw cycles.
<b>Storage buffer</b>	pH: 7.40 Preservative: 0.02% Sodium azide Constituents: 0.87% Sodium chloride, 50% Glycerol (glycerin, glycerine), PBS
<b>Purity</b>	Without Mg <sup>2+</sup> and Ca <sup>2+</sup> Immunogen affinity purified
<b>Clonality</b>	Polyclonal
<b>Isotype</b>	IgG

### Applications

## The Abpromise guarantee

Our **Abpromise guarantee** covers the use of ab74804 in the following tested applications.

The application notes include recommended starting dilutions; optimal dilutions/concentrations should be determined by the end user.

Application	Abreviews	Notes
IHC-P		1/50 - 1/100.
WB		1/500 - 1/1000. Predicted molecular weight: 54 kDa.

## Target

### Function

Hydrolyzes cerebroside sulfate.

### Involvement in disease

Defects in ARSA are a cause of leukodystrophy metachromatic (MLD) [MIM:250100]. MLD is a disease due to a lysosomal storage defect. It is characterized by intralysosomal storage of cerebroside-3-sulfate in neural and non-neural tissues, with a diffuse loss of myelin in the central nervous system. Progressive demyelination causes a variety of neurological symptoms, including gait disturbances, ataxias, optical atrophy, dementia, seizures, and spastic tetraparesis. Three forms of the disease can be distinguished according to the age at onset: late-infantile, juvenile and adult.

Arylsulfatase A activity is defective in multiple sulfatase deficiency (MSD) [MIM:272200]. MSD is a disorder characterized by decreased activity of all known sulfatases. MSD is due to defects in SUMF1 resulting in the lack of post-translational modification of a highly conserved cysteine into 3-oxoalanine. It combines features of individual sulfatase deficiencies such as metachromatic leukodystrophy, mucopolysaccharidosis, chondrodysplasia punctata, hydrocephalus, ichthyosis, neurologic deterioration and developmental delay.

### Sequence similarities

Belongs to the sulfatase family.

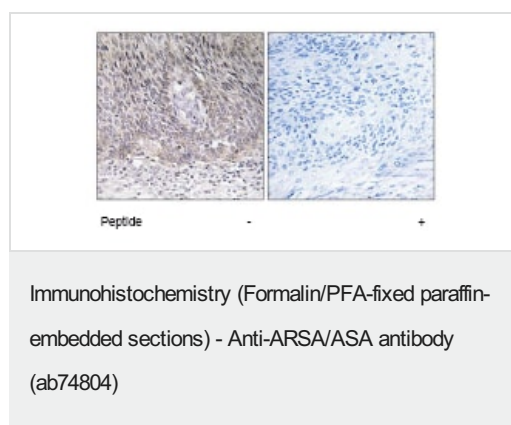
### Post-translational modifications

The conversion to 3-oxoalanine (also known as C-formylglycine, FGly), of a serine or cysteine residue in prokaryotes and of a cysteine residue in eukaryotes, is critical for catalytic activity. This post-translational modification is severely defective in multiple sulfatase deficiency (MSD).

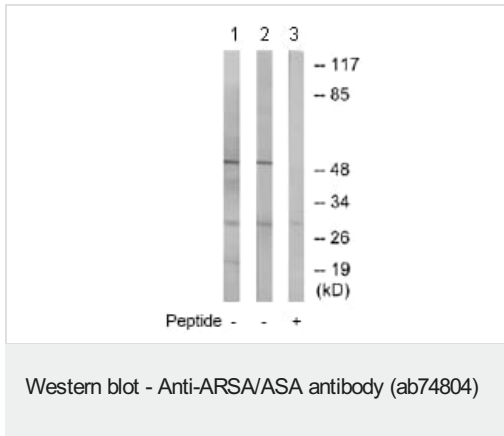
### Cellular localization

Lysosome.

## Images



ab74804 at 1/50 dilution staining ARSA/ASA in human cervix carcinoma by Immunohistochemistry, Paraffin-embedded tissue, in the absence or presence of the immunising peptide.



**All lanes :** Anti-ARSA/ASA antibody (ab74804) at 1/500 dilution

**Lane 1 :** Jurkat cell extracts

**Lane 2 :** COLO 205 cell extracts

**Lane 3 :** Jurkat cell extracts with immunising peptide at 10 µg

Lysates/proteins at 30 µg per lane.

**Predicted band size:** 54 kDa

**Observed band size:** 54 kDa

**Additional bands at:** 30 kDa. We are unsure as to the identity of these extra bands.

**Please note:** All products are "FOR RESEARCH USE ONLY. NOT FOR USE IN DIAGNOSTIC PROCEDURES"

### Our Abpromise to you: Quality guaranteed and expert technical support

- Replacement or refund for products not performing as stated on the datasheet
- Valid for 12 months from date of delivery
- Response to your inquiry within 24 hours
- We provide support in Chinese, English, French, German, Japanese and Spanish
- Extensive multi-media technical resources to help you
- We investigate all quality concerns to ensure our products perform to the highest standards

If the product does not perform as described on this datasheet, we will offer a refund or replacement. For full details of the Abpromise, please visit <https://www.abcam.com/abpromise> or contact our technical team.

### Terms and conditions

- Guarantee only valid for products bought direct from Abcam or one of our authorized distributors