


Product datasheet

Anti-ARSA/ASA antibody [EPR11039] ab174844

Recombinant RabMAb

[1 References](#) [4 Images](#)

Overview

Product name	Anti-ARSA/ASA antibody [EPR11039]
Description	Rabbit monoclonal [EPR11039] to ARSA/ASA
Host species	Rabbit
Tested applications	Suitable for: IHC-P, WB Unsuitable for: Flow Cyt, ICC/IF or IP
Species reactivity	Reacts with: Human Predicted to work with: Mouse  Does not react with: Rat
Immunogen	Synthetic peptide. This information is proprietary to Abcam and/or its suppliers.
Positive control	Human skin, A431 and HeLa lysates; Human colon and kidney tissues.
General notes	<p>This product is a recombinant monoclonal antibody, which offers several advantages including:</p> <ul style="list-style-type: none"> - High batch-to-batch consistency and reproducibility - Improved sensitivity and specificity - Long-term security of supply - Animal-free production <p>For more information see here.</p> <p>Our RabMAb[®] technology is a patented hybridoma-based technology for making rabbit monoclonal antibodies. For details on our patents, please refer to RabMAb[®] patents.</p>

Properties

Form	Liquid
Storage instructions	Shipped at 4°C. Store at +4°C short term (1-2 weeks). Upon delivery aliquot. Store at -20°C long term. Avoid freeze / thaw cycle.
Storage buffer	pH: 7.20 Preservative: 0.01% Sodium azide Constituents: 9% PBS, 40% Glycerol (glycerin, glycerine), 0.05% BSA, 50% Tissue culture supernatant
Purity	Protein A purified
Clonality	Monoclonal

Clone number	EPR11039
Isotype	IgG

Applications

The Abpromise guarantee Our **Abpromise guarantee** covers the use of ab174844 in the following tested applications. The application notes include recommended starting dilutions; optimal dilutions/concentrations should be determined by the end user.

Application	Abreviews	Notes
IHC-P		1/50 - 1/100. Perform heat mediated antigen retrieval before commencing with IHC staining protocol.
WB		1/1000 - 1/5000. Detects a band of approximately 60-62 kDa (predicted molecular weight: 54 kDa).

Application notes Is unsuitable for Flow Cyt, ICC/IF or IP.

Target

Function Hydrolyzes cerebroside sulfate.

Involvement in disease Defects in ARSA are a cause of leukodystrophy metachromatic (MLD) [MIM:250100]. MLD is a disease due to a lysosomal storage defect. It is characterized by intralysosomal storage of cerebroside-3-sulfate in neural and non-neural tissues, with a diffuse loss of myelin in the central nervous system. Progressive demyelination causes a variety of neurological symptoms, including gait disturbances, ataxias, optical atrophy, dementia, seizures, and spastic tetraparesis. Three forms of the disease can be distinguished according to the age at onset: late-infantile, juvenile and adult.

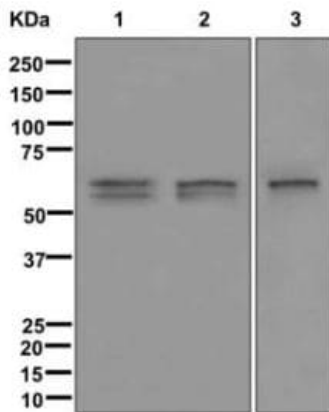
Arylsulfatase A activity is defective in multiple sulfatase deficiency (MSD) [MIM:272200]. MSD is a disorder characterized by decreased activity of all known sulfatases. MSD is due to defects in SUMF1 resulting in the lack of post-translational modification of a highly conserved cysteine into 3-oxoalanine. It combines features of individual sulfatase deficiencies such as metachromatic leukodystrophy, mucopolysaccharidosis, chondrodysplasia punctata, hydrocephalus, ichthyosis, neurologic deterioration and developmental delay.

Sequence similarities Belongs to the sulfatase family.

Post-translational modifications The conversion to 3-oxoalanine (also known as C-formylglycine, FGly), of a serine or cysteine residue in prokaryotes and of a cysteine residue in eukaryotes, is critical for catalytic activity. This post-translational modification is severely defective in multiple sulfatase deficiency (MSD).

Cellular localization Lysosome.

Images



Western blot - Anti-ARSA/ASA antibody
[EPR11039] (ab174844)

All lanes : Anti-ARSA/ASA antibody [EPR11039] (ab174844) at
1/1000 dilution

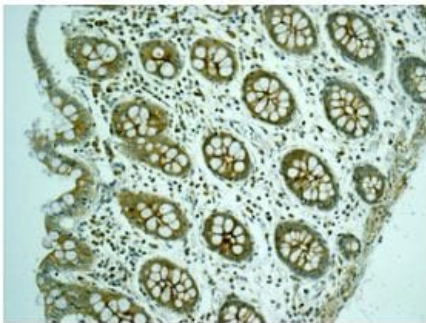
Lane 1 : Human skin lysates

Lane 2 : A431 cell lysates

Lane 3 : HeLa cell lysates

Lysates/proteins at 10 µg per lane.

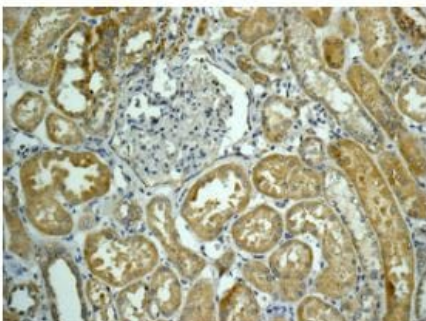
Predicted band size: 54 kDa



Immunohistochemistry (Formalin/PFA-fixed paraffin-
embedded sections) - Anti-ARSA/ASA antibody
[EPR11039] (ab174844)

Immunohistochemical analysis of formalin-fixed, paraffin-embedded
Human colon tissue labeling ARSA/ASA with ab174844 at 1/50
dilution.

Perform heat mediated antigen retrieval before commencing with
IHC staining protocol.



Immunohistochemistry (Formalin/PFA-fixed paraffin-
embedded sections) - Anti-ARSA/ASA antibody
[EPR11039] (ab174844)

Immunohistochemical analysis of formalin-fixed, paraffin-embedded
Human kidney tissue labeling ARSA/ASA with ab174844 at 1/50
dilution.

Perform heat mediated antigen retrieval before commencing with
IHC staining protocol.

Why choose a recombinant antibody?



Research with confidence
Consistent and reproducible results



Long-term and scalable supply
Recombinant technology



Success from the first experiment
Confirmed specificity



Ethical standards compliant
Animal-free production

Anti-ARSA/ASA antibody [EPR11039] (ab174844)

Please note: All products are "FOR RESEARCH USE ONLY. NOT FOR USE IN DIAGNOSTIC PROCEDURES"

Our Abpromise to you: Quality guaranteed and expert technical support

- Replacement or refund for products not performing as stated on the datasheet
- Valid for 12 months from date of delivery
- Response to your inquiry within 24 hours
- We provide support in Chinese, English, French, German, Japanese and Spanish
- Extensive multi-media technical resources to help you
- We investigate all quality concerns to ensure our products perform to the highest standards

If the product does not perform as described on this datasheet, we will offer a refund or replacement. For full details of the Abpromise, please visit <https://www.abcam.com/abpromise> or contact our technical team.

Terms and conditions

- Guarantee only valid for products bought direct from Abcam or one of our authorized distributors